





# Hook ups

Copying of this document, and giving it to others and the use or communication of the contents thereof, are forbidden without express authority by Lurgi. Offenders are liable to the payment of damages. All rights are reserved in the event of the grant of a patent or the registration of a utility model or design.

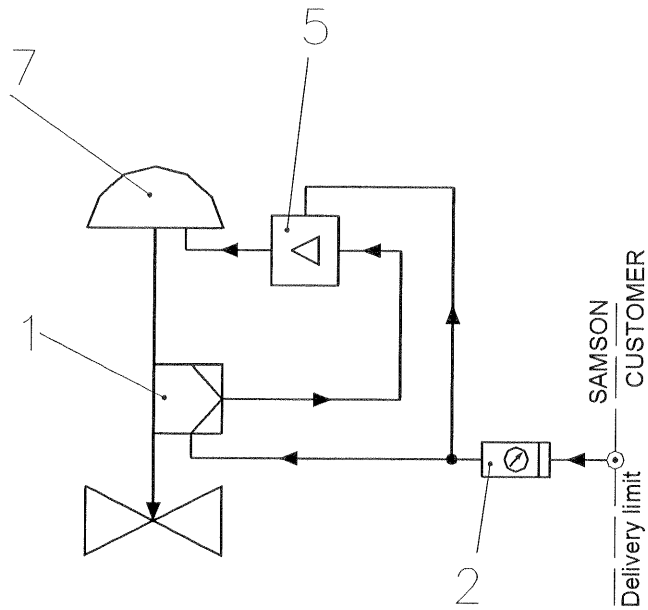
V12/sro	2005-06-01	V12/lf	V12/di	2005-06-10	FI	FINAL ISSUE			
V12/sro	2004-09-01	V12/lf	V12/di	2004-09-10	IFR	FIRST ISSUE			
Name	Date	Name	Name	Date	Status				
Prepared, revised		Checked	Approved			Remark, kind of revision			
 <p><b>Contractor:</b> PETROCHEMICAL INDUSTRIES DESIGN &amp; ENGINEERING CO. شرکت طراحی و مهندسی صنایع پتروشیمی</p>						<b>Owner Project No:</b> 232000	<b>Contractor Order No:</b> 1182-POR-IN-644	<b>Q.L.</b> -	<b>DCC</b> -
							<b>Vendor Order Ref.</b> 616 100		
<b>mg engineering</b> <b>Lurgi</b>	<b>Project Name</b> 2nd ZAGROS METHANOL PLANT				<b>Lurgi Doc. No.</b>	<b>Vendor Doc. No.</b> SAM-121	<b>Sheet / of</b> 1 / 34	<b>Revision</b> 01	



**Verrohrungsplan / Hook up  
Plan\ No. 1 (3271)**

<b>SAMSON No:</b>	616 100
<b>Project:</b>	2 nd ZAGROS Methanol Plant
<b>Date:</b>	2005-06-01
<b>Name:</b>	V12/sro

Revison: \_\_\_\_\_



Supply air connection 1/2 NPT

Pos.	Meßstelle
Pos.	Tag No.
	FV-101435
	FV-101439
	FV-101441
	LV-100416
	PV-100529A
	PV-100529B
	PV-150601B

Pos	Stck.	Bezeichnung	Typ / Fabr.	pn. Anschl.	Sachnr.
Pos	Qty.	Description	Type / Manuf.	pneu. Con.	Part No.
1	1	Stellungsregler/ Positioner	3780-100 Gauges IP65 Eex ia	1¼" NPT	
2	1	Zuluftstation/ Air set	B74G-6AK-AP3-RMN Norgren	3¼" NPT	
3		Magnetventil/ Solenoid valve			
4		Drossel/ Throttle valve			
5	1	Volumenverstärker/ Booster	8523-0084 SMC EIL100	G 3/8"	
6		Schnellentlüfter/ Quick exhaust			
7	1	Antrieb/ Actuator	3271-1400\2800cm2 SAMSON	1¼" NPT	
8		Verblockrelais/ Lock up valve			
9		Sonstiges / Miscellaneous			
10					
11					
12		Pneu. Anschlußverschraubung / Pn. Connection			
13		Ausblaseschalldämpfer/ Vent Filter			
14		Filter/ Filter	<input type="checkbox"/> IP54 <input type="checkbox"/> IP65		
15					

<b>Rohr/ Pipe</b>	<b>Größe/ Size</b>	<b>Dimensions</b>	<b>Material</b>
	12	{cm} {inch}	St.St.
<b>Fitting</b>	<input type="checkbox"/> ERMETO <input checked="" type="checkbox"/> SWAGELOK <input type="checkbox"/> PARKER <input type="checkbox"/> .....		
<b>Stellzeit/ Stroking time</b>	<b>Bewegungsrichtung/ Direction</b>	100 ... 0%	0...100%
	<b>Vorgabe/ requested [s]</b>		
	<b>Gemessen/ measured [s]</b>		

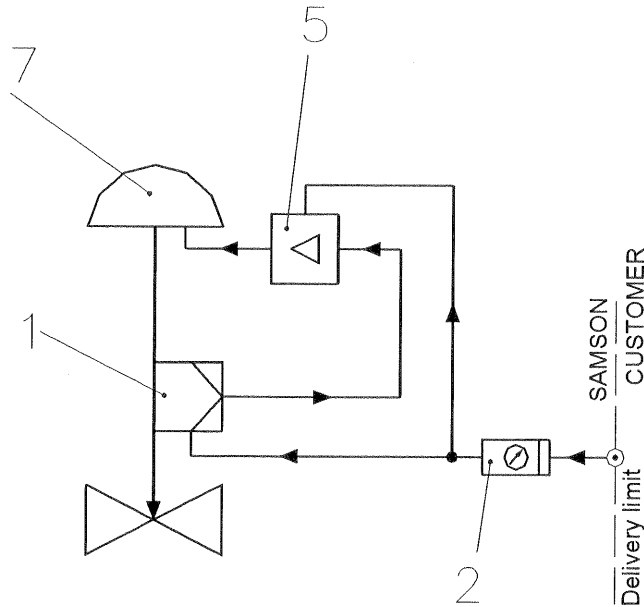
**Funktion / Function**



## Verrohrungsplan / Hook up Plan\ No. 1 (3277)

<b>SAMSON No:</b>	616 100
<b>Project:</b>	2 nd ZAGROS Methanol Plant
<b>Date:</b>	2004-09-01
<b>Name:</b>	V12/sro

Revison: \_\_\_\_\_



Pos.	Meßstelle
Pos.	Tag No.
	FV-150725
	FV-150630
	FV-101433
	FV-101432

Supply air connection 1/2 NPT

Pos	Stck.	Bezeichnung	Typ / Fabr.	pn. Anschl.	Sachnr.
Pos	Qty.	Description	Type / Manuf.	pneu. Con.	Part No.
1	1	Stellungsregler/ Positioner	3780-120 Gauges IP65 Eex ia	1¼" NPT	
2	1	Zuluftstation/ Air set	B74G-6AK-AP3-RMN Norgren	¾" NPT	
3		Magnetventil/ Solenoid valve			
4		Drossel/ Throttle valve			
5	1	Volumenverstärker/ Booster	8523-0084 SMC EIL100	G ¾"	
6		Schnellentlüfter/ Quick exhaust			
7	1	Antrieb/ Actuator	3277-700cm2 SAMSON	1¼" NPT	
8		Verblockrelais/ Lock up valve			
9		Sonstiges / Miscellaneous			
10					
11					
12		Pneu. Anschlußverschraubung / Pn. Connector			
13		Ausblaseschalldämpfer/ Vent Filter			
14		Filter/ Filter	<input type="checkbox"/> IP54 <input type="checkbox"/> IP65		
15					
Rohr/ Pipe	Größe/ Size		Dimensions	Material	
	12		{cm} {inch}	St.St.	
Fitting	<input type="checkbox"/> ERMETO <input checked="" type="checkbox"/> SWAGELOK <input type="checkbox"/> PARKER <input type="checkbox"/> .....				
Stellzeit/ Stroking time	Bewegungsrichtung/ Direction		100 ... 0%	0...100%	ON/OFF mit Magnetventil (with Solenoidvalve)
	Vorgabe/ requested [s]				
	Gemessen/ measured [s]				

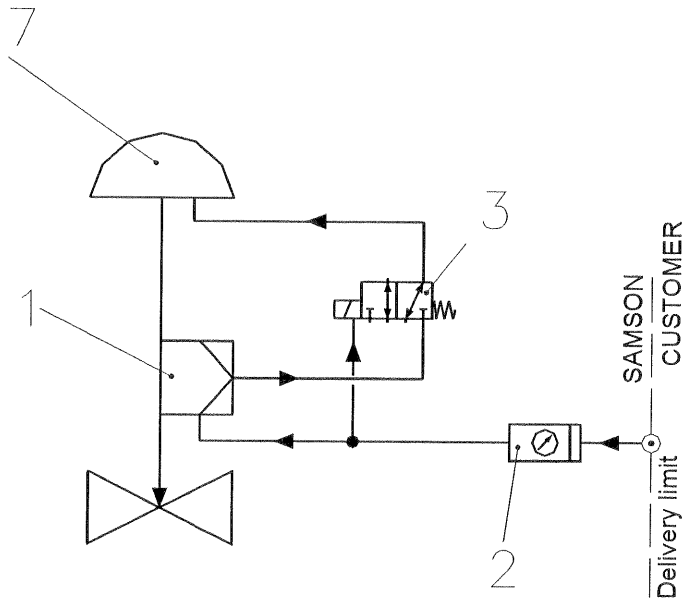
Funktion / Function



## Verrohrungsplan / Hook up Plan\ No. 3

<b>SAMSON No:</b>	616 100
<b>Project:</b>	2nd ZAGROS Methanol Plant
<b>Date:</b>	2004-09-01
<b>Name:</b>	V12/sro

Revison:				
----------	--	--	--	--



Supply air connection 1/4 NPT

<b>Pos.</b>	<b>Meßstelle</b>
<b>Pos.</b>	<b>Tag No.</b>
	FV-100406

Pos	Stck.	Bezeichnung	Typ / Fabr.	pn. Anschl.	Sachnr.
Pos	Qty.	Description	Type / Manuf.	pneu. Con.	Part No.
1	1	Stellungsregler/ Positioner	3787-100 Gauges IP65 Eex ia	1¼" NPT	
2	1	Zuluftstation/ Air set	B74G-4AK-AP3-RMN Norgren	1¼" NPT	
3	1	Magnetventil/ Solenoid valve	3963-1353 SAMSOMATIC	1¼" NPT	
4		Drossel/ Throttle valve			
5		Volumenverstärker/ Booster			
6		Schnellentlüfter/ Quick exhaust			
7	1	Antrieb/ Actuator	3277-700cm2 SAMSON	1¼" NPT	
8		Verblockrelais/ Lock up valve			
9		Sonstiges / Miscellaneous			
10					
11					
12		Pneu. Anschlußverschraubung / Pn. Connection			
13		Ausblaseschalldämpfer/ Vent Filter			
14		Filter/ Filter	<input type="checkbox"/> IP54 <input type="checkbox"/> IP65		
15					
Rohr/ Pipe	Größe/ Size		Dimensions	Material	
	12		{cm} [inch]	St.St.	
Fitting	<input type="checkbox"/> ERMETO <input checked="" type="checkbox"/> SWAGELOK <input type="checkbox"/> PARKER <input type="checkbox"/> .....				
Stellzeit/ Stroking time	Bewegungsrichtung/ Direction		100 ... 0%	0...100%	ON/OFF mit Magnetventil (with Solenoidvalve)
	Vorgabe/ requested [s]				
	Gemessen/ measured [s]				

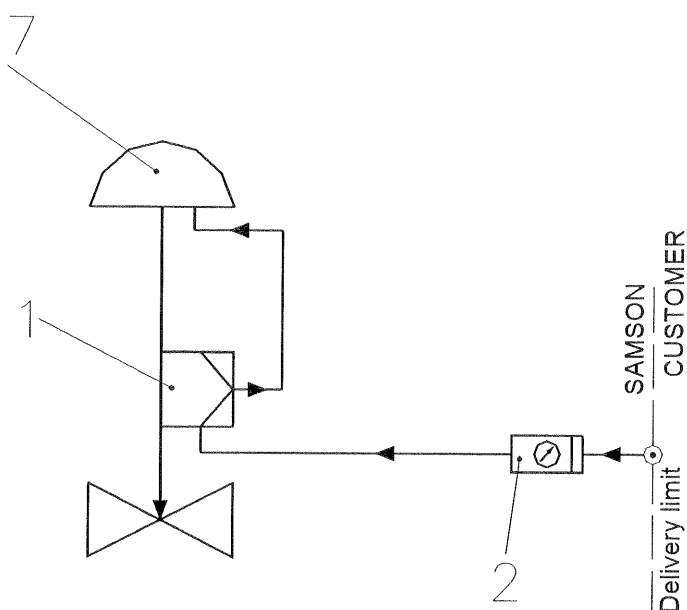
**Funktion / Function**



**Verrohrungsplan / Hook up  
Plan\ No. 4**

<b>SAMSON No:</b>	616 100
<b>Project:</b>	2nd ZAGROS Methanol Plant
<b>Date:</b>	2004-09-01
<b>Name:</b>	V12/sro

<b>Revision:</b>				
------------------	--	--	--	--



**Supply air connection 1/4 NPT**

Pos.	Meßstelle
Pos.	Tag No.
	FV-100429
	FV-100512
	LV-100411
	LV-101308
	LV-101309
	LV-101512A
	LV-101512B
	PV-100201
	PV-100513
	PV-101502B
	LV-150406
	LV-150505
	PV-150101
	PV-250103
	FV-250102
	FV-250105
	PV-250102B
	FV-300203
	FV-300305
	FV-300306
	FV-300510B
	FV-300920

Pos	Stck.	Bezeichnung	Typ / Fabr.	pn. Anschl.	Sachnr.
Pos	Qty.	Description	Type / Manuf.	pneu. Con.	Part No.
1	1	Stellungsregler/ Positioner	3787-100 Gauges IP65 Eex ia	1/4" NPT	
2	1	Zuluftstation/ Air set	B74G-4AK-AP3-RMN Norgren	1/4" NPT	
3		Magnetventil/ Solenoid valve			
4		Drossel/ Throttle valve			
5		Volumenverstärker/ Booster			
6		Schnellentlüfter/ Quick exhaust			
7	1	Antrieb/ Actuator	3277-350\ 700cm2 SAMSON	1/4" NPT	
8		Verblockrelais/ Lock up valve			
9		Sonstiges / Miscellaneous			
10					
11					
12		Pneu. Anschlußverschraubung / Pn. Connection			
13		Ausblaseschalldämpfer/ Vent Filter			
14		Filter/ Filter	<input type="checkbox"/> IP54 <input type="checkbox"/> IP65		
15					

<b>Rohr/ Pipe</b>	<b>Größe/ Size</b>	<b>Dimensions</b>	<b>Material</b>
	12	-cm] [inch]	St.St.
<b>Fitting</b>	<input type="checkbox"/> ERMETO <input checked="" type="checkbox"/> SWAGELOK <input type="checkbox"/> PARKER <input type="checkbox"/> .....		
<b>Stellzeit/ Stroking time</b>	<b>Bewegungsrichtung/ Direction</b>	100 ... 0%	0...100%
	<b>Vorgabe/ requested [s]</b>		
	<b>Gemessen/ measured [s]</b>		

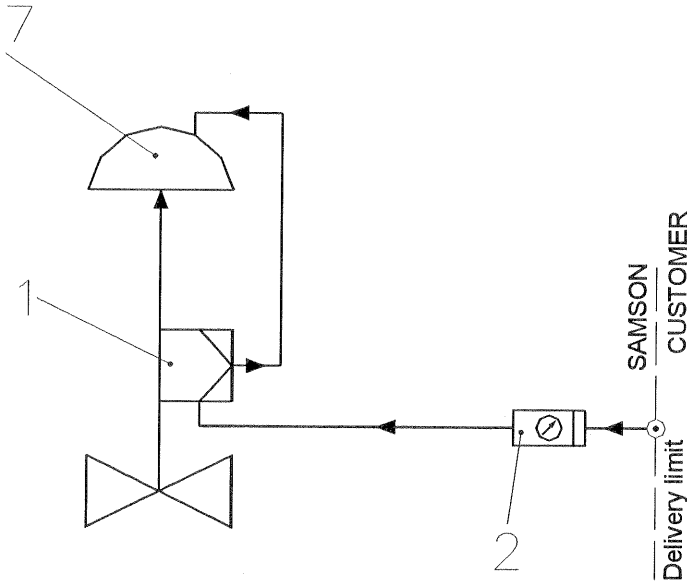
**Funktion / Function**



## Verrohrungsplan / Hook up Plan\ No. 10

SAMSON No:	616 100
Project:	2nd ZAGROS Methanol Plant
Date:	2004-09-01
Name:	V12/sro

Revision: \_\_\_\_\_



Supply air connection 1/4 NPT

Pos.	Meßstelle
Pos.	Tag No.
	LV-101602
	PV-1015021
	FV-150411
	PV-300909A

Pos	Stck.	Bezeichnung	Typ / Fabr.	pn. Anschl.	Sachnr.
Pos	Qty.	Description	Type / Manuf.	pneu. Con.	Part No.
1	1	Stellungsregler/ Positioner	3787-100 Gauges IP65 Eex ia	1/4" NPT	
2	1	Zuluftstation/ Air set	B74G-4AK-AP3-RMN Norgren	1/4" NPT	
3		Magnetventil/ Solenoid valve			
4		Drossel/ Throttle valve			
5		Volumenverstärker/ Booster			
6		Schnellentlüfter/ Quick exhaust			
7	1	Antrieb/ Actuator	3277-350\ 700cm2 SAMSON	1/4" NPT	
8		Verblockrelais/ Lock up valve			
9		Sonstiges / Miscellaneous			
10					
11					
12		Pneu. Anschlußverschraubung / Pn. Connection			
13		Ausblaseschalldämpfer/ Vent Filter			
14		Filter/ Filter	<input type="checkbox"/> IP54 <input type="checkbox"/> IP65		
15					
Rohr/ Pipe	Größe/ Size		Dimensions	Material	
	12		[cm] [inch]	St.St.	
Fitting	<input type="checkbox"/> ERMETO <input checked="" type="checkbox"/> SWAGELOK <input type="checkbox"/> PARKER <input type="checkbox"/> .....				
Stellzeit/ Stroking time	Bewegungsrichtung/ Direction		100 ... 0%	0...100%	ON/OFF mit Magnetventil (with Solenoidvalve)
	Vorgabe/ requested [s]				
	Gemessen/ measured [s]				

Funktion / Function

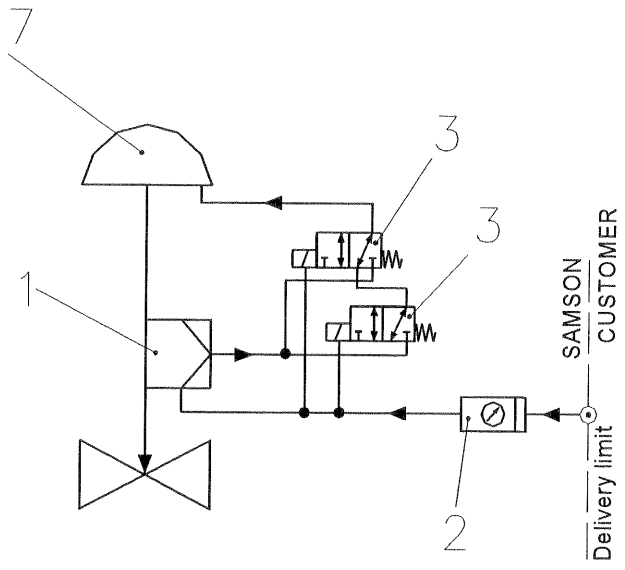


## Verrohrungsplan / Hook up Plan\ No. 18

<b>SAMSON No:</b>	616 100
<b>Project:</b>	2nd ZAGROS Methanol Plant
<b>Date:</b>	2004-09-01
<b>Name:</b>	V12/sro

Revison: \_\_\_\_\_

<b>Pos.</b>	<b>Meßstelle</b>
<b>Pos.</b>	<b>Tag No.</b>
	FV-100326



Supply air connection 1/2 NPT

Pos	Stck.	Bezeichnung	Typ / Fabr.	pn. Anschl.	Sachnr.
Pos	Qty.	Description	Type / Manuf.	pneu. Con.	Part No.
1	1	Stellungsregler/ Positioner	3787-100 Gauges IP65 Eex ia	1¼" NPT	
2	1	Zulufstation/ Air set	B74G-4AK-AP3-RMN Norgren	1¼" NPT	
3	2	Magnetventil/ Solenoid valve	3963-1353 SAMSOMATIC	1¼" NPT	
4		Drossel/ Throttle valve			
5		Volumenverstärker/ Booster			
6		Schnellentlüfter/ Quick exhaust			
7	1	Antrieb/ Actuator	3277-700cm2 SAMSON	1¼" NPT	
8		Verblockrelais/ Lock up valve			
9		Sonstiges / Miscellaneous			
10					
11					
12		Pneu. Anschlußverschraubung / Pn. Connection			
13		Ausblaseschalldämpfer/ Vent Filter			
14		Filter/ Filter	<input type="checkbox"/> IP54 <input type="checkbox"/> IP65		
15					
<b>Rohr/ Pipe</b>		<b>Größe/ Size</b> 112	<b>Dimensions</b> [cm] [inch]	<b>Material</b> St.St.	
<b>Fitting</b>		<input type="checkbox"/> ERMETO <input checked="" type="checkbox"/> SWAGELOK <input type="checkbox"/> PARKER <input type="checkbox"/> .....			
<b>Stellzeit/ Stroking time</b>		<b>Bewegungsrichtung/ Direction</b>	100 ... 0%	0...100%	ON/OFF mit Magnetventil (with Solenoidvalve)
		Vorgabe/ requested [s]			
		Gemessen/ measured [s]			

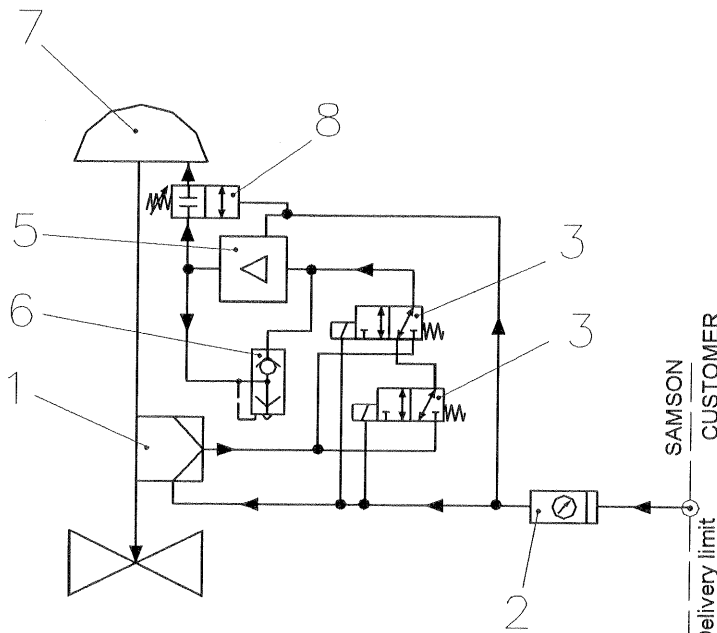
**Funktion / Function**



## Verrohrungsplan / Hook up Plan\ No. 20

<b>SAMSON No:</b>	616 100
<b>Project:</b>	2nd ZAGROS Methanol Plant
<b>Date:</b>	2004-09-01
<b>Name:</b>	V12/sro

Revision:			
-----------	--	--	--



Supply air connection 1/4 NPT

<b>Pos.</b>	<b>Meßstelle</b>
<b>Pos.</b>	<b>Tag No.</b>
	FV-100704
	FV-101041

Pos	Stck.	Bezeichnung	Typ / Fabr.	pn. Anschl.	Sachnr.
Pos	Qty.	Description	Type / Manuf.	pneu. Con.	Part No.
1	1	Stellungsregler/ Positioner	3780-120 Gauges IP65 Eex ia	1 1/4" NPT	
2	1	Zuluftstation/ Air set	B74G-6AK-AP3-RMN Norgren	3/4" NPT	
3	2	Magnetventil/ Solenoid valve	3963-1353 SAMSOMATIC	1 1/4" NPT	
4		Drossel/ Throttle valve			
5	1	Volumenverstärker/ Booster	8523-0084 SMC EIL100	G 3/8"	
6	-1	Schnellentlüfter/ Quick exhaust	4050414 Herion	G 3/4"	
7	1	Antrieb/ Actuator	3271-1400cm2 SAMSON	1 1/4" NPT	
8	1	Verblockrelais/ Lock up valve	3709-1SAMSON		
9		Sonstiges / Miscellaneous			
10					
11					
12		Pneu. Anschlußverschraubung / Pn. Connection			
13		Ausblaseschalldämpfer/ Vent Filter			
14		Filter/ Filter	<input type="checkbox"/> IP54 <input type="checkbox"/> IP65		
15					
<b>Rohr/ Pipe</b>	<b>Größe/ Size</b>		<b>Dimensions</b>	<b>Material</b>	
	12		[cm] [inch]	St.St.	
<b>Fitting</b>	<input type="checkbox"/> ERMETO <input checked="" type="checkbox"/> SWAGELOK <input type="checkbox"/> PARKER <input type="checkbox"/> .....				
<b>Stellzeit/ Stroking time</b>	Bewegungsrichtung/ Direction		100 ... 0%	0...100%	ON/OFF mit Magnetventil (with Solenoidvalve)
	Vorgabe/ requested [s]				
	Gemessen/ measured [s]				

**Funktion / Function**



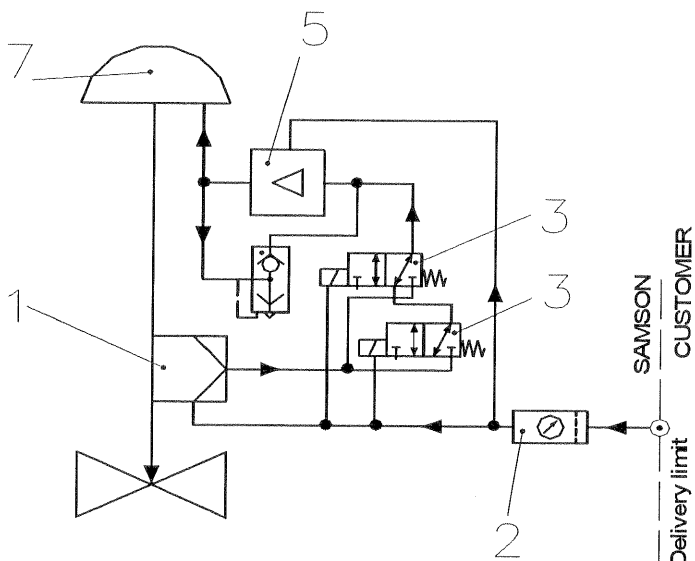


Verrohrungsplan / Hook up  
Plan\ No. 21

SAMSON No:	616 100
Project:	2nd ZAGROS Methanol Plant
Date:	2004-09-01
Name:	V12/sro

Revison:

Pos.	Meßstelle
Pos.	Tag No.
	FV-100825



Supply air connection 1/2 NPT

Pos	Stck.	Bezeichnung	Typ / Fabr.	pn. Anschl.	Sachnr.
Pos	Qty.	Description	Type / Manuf.	pneu. Con.	Part No.
1	1	Stellungsregler/ Positioner	3780-100 Gauges IP65 Eex ia	1 1/4" NPT	
2	1	Zuluftstation/ Air set	B74G-6AK-AP3-RMN Norgren	3/4" NPT	
3	2	Magnetventil/ Solenoid valve	3963-1353 SAMSOMATIC	1 1/4" NPT	
4		Drossel/ Throttle valve			
5	1	Volumenverstärker/ Booster	2625 Fisher	3/4" NPT	
6	1	Schnellentlüfter/ Quick exhaust			
7	1	Antrieb/ Actuator	3271-2800cm2 SAMSON	1 1/4" NPT	
8		Verblockrelais/ Lock up valve			
9		Sonstiges / Miscellaneous			
10					
11					
12		Pneu. Anschlußverschraubung / Pn. Connection			
13		Ausblaseschalldämpfer/ Vent Filter			
14		Filter/ Filter	<input type="checkbox"/> IP54 <input type="checkbox"/> IP65		
15					
Rohr/ Pipe	Größe/ Size		Dimensions	Material	
	1 1/2		{cm} {inch}	St.St.	
Fitting	<input type="checkbox"/> ERMETO <input checked="" type="checkbox"/> SWAGELOK <input type="checkbox"/> PARKER <input type="checkbox"/> .....				
Stellzeit/ Stroking time	Bewegungsrichtung/ Direction		100 ... 0%	0...100%	ON/OFF mit Magnetventil (with Solenoidvalve)
	Vorgabe/ requested [s]				
	Gemessen/ measured [s]				

Funktion / Function

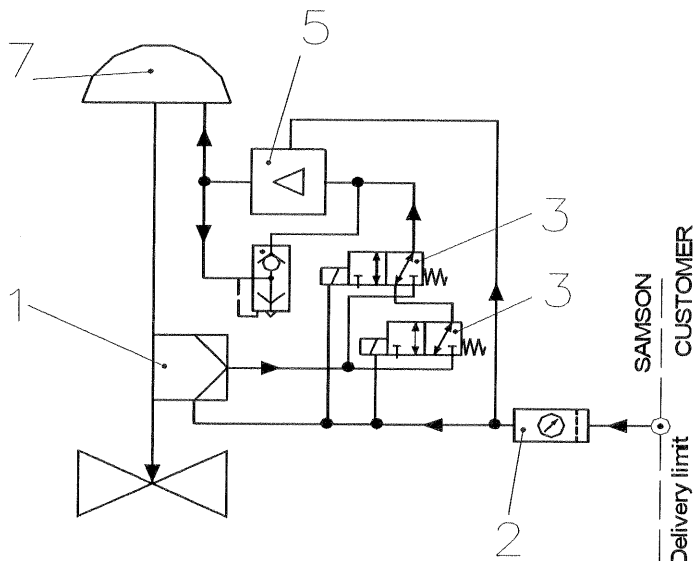


# Verrohrungsplan / Hook up Plan\ No. 21a

<b>SAMSON No:</b>	616 100
<b>Project:</b>	2nd ZAGROS Methanol Plant
<b>Date:</b>	2005-06-01
<b>Name:</b>	V12/sro

Revison: \_\_\_\_\_

<b>Pos.</b>	<b>Meßstelle</b>
<b>Pos.</b>	<b>Tag No.</b>
	FV-100831



Supply air connection 1/2 NPT

Pos	Stck.	Bezeichnung	Typ / Fabr.	pn. Anschl.	Sachnr.
Pos	Qty.	Description	Type / Manuf.	pneu. Con.	Part No.
1	1	Stellungsregler/ Positioner	3780-100 Gauges IP65 Eex ia	1/4" NPT	
2	1	Zuluftstation/ Air set	B74G-6AK-AP3-RMN Norgren	3/4" NPT	
3	2	Magnetventil/ Solenoid valve	3963-1353 SAMSOMATIC	1/4" NPT	
4		Drossel/ Throttle valve			
5	1	Volumenverstärker/ Booster	8523-0084 SMC EIL100	G 3/8"	
6		Schnellentlüfter/ Quick exhaust			
7	1	Antrieb/ Actuator	3271-1400 cm2 SAMSON	1/4" NPT	
8		Verblockrelais/ Lock up valve			
9		Sonstiges / Miscellaneous			
10					
11					
12		Pneu. Anschlußverschraubung / Pn. Connection			
13		Ausblaseschalldämpfer/ Vent Filter			
14		Filter/ Filter	<input type="checkbox"/> IP54 <input type="checkbox"/> IP65		
15					
<b>Rohr/ Pipe</b>	<b>Größe/ Size</b>		<b>Dimensions</b>	<b>Material</b>	
	12		-cm] [inch]	St.St.	
<b>Fitting</b>	<input type="checkbox"/> <b>ERMETO</b> <input checked="" type="checkbox"/> <b>SWAGELOK</b> <input type="checkbox"/> <b>PARKER</b> <input type="checkbox"/> .....				
<b>Stellzeit/ Stroking time</b>	<b>Bewegungsrichtung/ Direction</b>		100 ... 0%	0....100%	ON/OFF mit Magnetventil (with Solenoidvalve)
	<b>Vorgabe/ requested [s]</b>				
	<b>Gemessen/ measured [s]</b>				

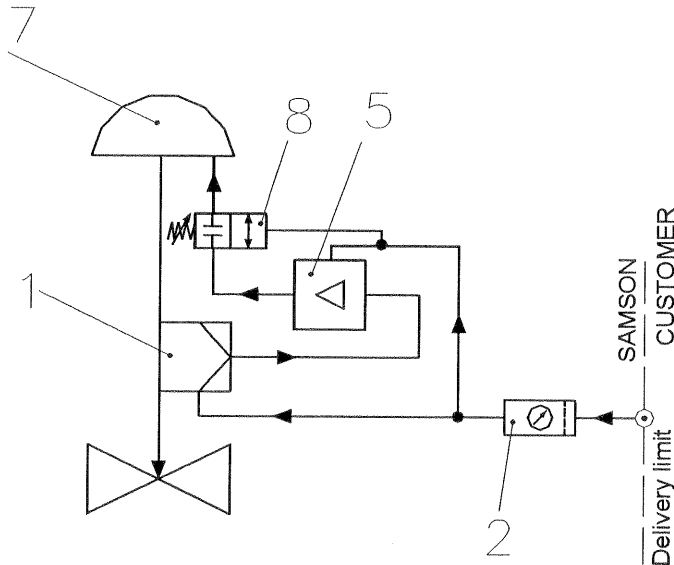
**Funktion / Function**



## Verrohrungsplan / Hook up Plan\ No. 22 (3271)

<b>SAMSON No:</b>	616 100
<b>Project:</b>	2nd ZAGROS Methanol Plant
<b>Date:</b>	2004-09-01
<b>Name:</b>	V12/sro

Revison: \_\_\_\_\_



Supply air connection 1/4 NPT

<b>Pos.</b>	<b>Meßstelle</b>
<b>Pos.</b>	<b>Tag No.</b>
	FV-101229A

Pos	Stck.	Bezeichnung	Typ / Fabr.	pn. Anschl.	Sachnr.
Pos	Qty.	Description	Type / Manuf.	pneu. Con.	Part No.
1	1	Stellungsregler/ Positioner	3787-100 Gauges IP65 Eex ia	1/4" NPT	
2	1	Zuluftstation/ Air set	B74G-6AK-AP3-RMN Norgren	3/4" NPT	
3		Magnetventil/ Solenoid valve			
4		Drossel/ Throttle valve			
5	1	Volumenverstärker/ Booster	8523-0084 SMC EIL100	G 3/8"	
6		Schnellentlüfter/ Quick exhaust			
7	1	Antrieb/ Actuator	3271-1400cm2 SAMSON	1/4" NPT	
8	1	Verblockrelais/ Lock up valve	3709-1		
9		Sonstiges / Miscellaneous			
10					
11					
12		Pneu. Anschlußverschraubung / Pn. Connection			
13		Ausblaseschalldämpfer/ Vent Filter			
14		Filter/ Filter	<input type="checkbox"/> IP54 <input type="checkbox"/> IP65		
15					
Rohr/ Pipe	Größe/ Size		Dimensions		Material
	112		[em] [inch]		St.St.
Fitting	<input type="checkbox"/> ERMETO <input checked="" type="checkbox"/> SWAGELOK <input type="checkbox"/> PARKER <input type="checkbox"/> .....				
Stellzeit/ Stroking time	Bewegungsrichtung/ Direction		100 ... 0%	0...100%	ON/OFF mit Magnetventil (with Solenoidvalve)
	Vorgabe/ requested [s]				
	Gemessen/ measured [s]				

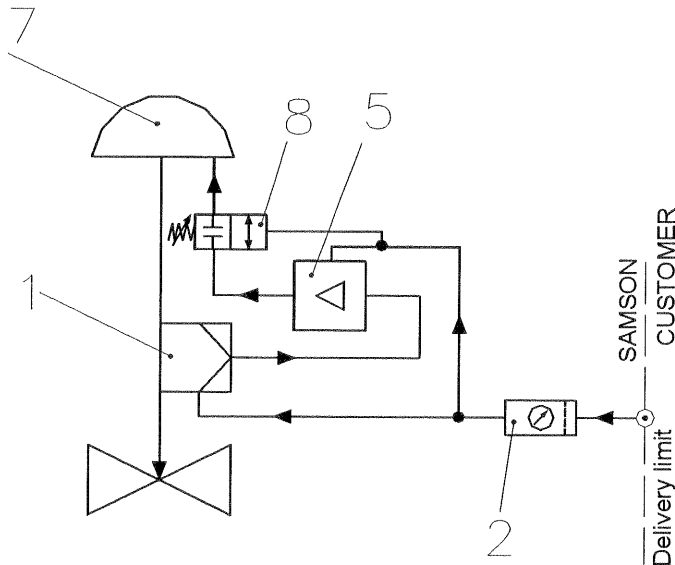
**Funktion / Function**



**Verrohrungsplan / Hook up  
Plan\ No. 22 (3277)**

<b>SAMSON No:</b>	616 100
<b>Project:</b>	2nd ZAGROS Methanol Plant
<b>Date:</b>	2004-09-01
<b>Name:</b>	V12/sro

Revison: \_\_\_\_\_



Supply air connection 1/4 NPT

<b>Pos.</b>	<b>Meßstelle</b>
<b>Pos.</b>	<b>Tag No.</b>
	PV-300808
	PV-300909B

Pos	Stck.	Bezeichnung	Typ / Fabr.	pn. Anschl.	Sachnr.
Pos	Qty.	Description	Type / Manuf.	pneu. Con.	Part No.
1	1	Stellungsregler/ Positioner	3787-100 Gauges IP65 Eex ia	1¼" NPT	
2	1	Zuluftstation/ Air set	B74G-6AK-AP3-RMN Norgren	¾" NPT	
3		Magnetventil/ Solenoid valve			
4		Drossel/ Throttle valve			
5	1	Volumenverstärker/ Booster	8523-0084 SMC EIL100	G 3/8"	
6		Schnellentlüfter/ Quick exhaust			
7	1	Antrieb/ Actuator	3277-120\700cm2 SAMSON	1¼" NPT	
8	1	Verblockrelais/ Lock up valve	3709-1		
9		Sonstiges / Miscellaneous			
10					
11					
12		Pneu. Anschlußverschraubung / Pn. Connector			
13		Ausblaseschalldämpfer/ Vent Filter			
14		Filter/ Filter	<input type="checkbox"/> IP54 <input type="checkbox"/> IP65		
15					
Rohr/ Pipe	Größe/ Size		Dimensions	Material	
	12		{cm} [inch]	St.St.	
Fitting	<input type="checkbox"/> ERMETO <input checked="" type="checkbox"/> SWAGELOK <input type="checkbox"/> PARKER <input type="checkbox"/> .....				
Stellzeit/ Stroking time	Bewegungsrichtung/ Direction		100 ... 0%	0...100%	ON/OFF mit Magnetventil (with Solenoidvalve)
	Vorgabe/ requested [s]				
	Gemessen/ measured [s]				

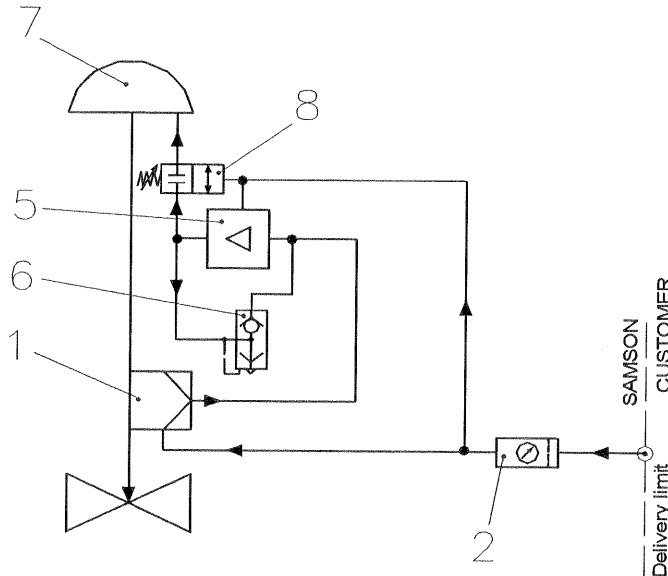
Funktion / Function



## Verrohrungsplan / Hook up Plan\ No.23

<b>SAMSON No:</b>	616 100
<b>Project:</b>	2nd ZAGROS Methanol Plant
<b>Date:</b>	2004-09-01
<b>Name:</b>	V12/sro

Revision: \_\_\_\_\_



Supply air connection 1/4 NPT

<b>Pos.</b>	<b>Meßstelle</b>
<b>Pos.</b>	<b>Tag No.</b>
	FV-101229B
	LV-150101A
	LV-200403

Pos	Stck.	Bezeichnung	Typ / Fabr.	pn. Anschl.	Sachnr.
Pos	Qty.	Description	Type / Manuf.	pneu. Con.	Part No.
1	1	Stellungsregler/ Positioner	3787-100 Gauges IP65 Eex ia	1 1/4" NPT	
2	1	Zuluftstation/ Air set	B74G-6AK-AP3-RMN Norgren	3/4" NPT	
3		Magnetventil/ Solenoid valve			
4		Drossel/ Throttle valve			
5	1	Volumenverstärker/ Booster	2625 Fisher	3/4" NPT	
6	1	Schnellentlüfter/ Quick exhaust	8502-0144	G 3/4"	
7	1	Antrieb/ Actuator	3271-2800cm2 SAMSON	1 1/4" NPT	
8	1	Verblockrelais/ Lock up valve	3709-1		
9		Sonstiges / Miscellaneous			
10					
11					
12		Pneu. Anschlußverschraubung / Pn. Connection			
13		Ausblaseschalldämpfer/ Vent Filter			
14		Filter/ Filter	<input type="checkbox"/> IP54 <input type="checkbox"/> IP65		
15					
<b>Rohr/ Pipe</b>		<b>Größe/ Size</b> 12	<b>Dimensions</b> [cm] [inch]	<b>Material</b> St.St.	
<b>Fitting</b>		<input type="checkbox"/> ERMETO <input checked="" type="checkbox"/> SWAGELOK <input type="checkbox"/> PARKER <input type="checkbox"/> .....			
<b>Stellzeit/ Stroking time</b>		<b>Bewegungsrichtung/ Direction</b>	100 ... 0%	0....100%	ON/OFF mit Magnetventil (with Solenoidvalve)
		<b>Vorgabe/ requested [s]</b>			
		<b>Gemessen/ measured [s]</b>			

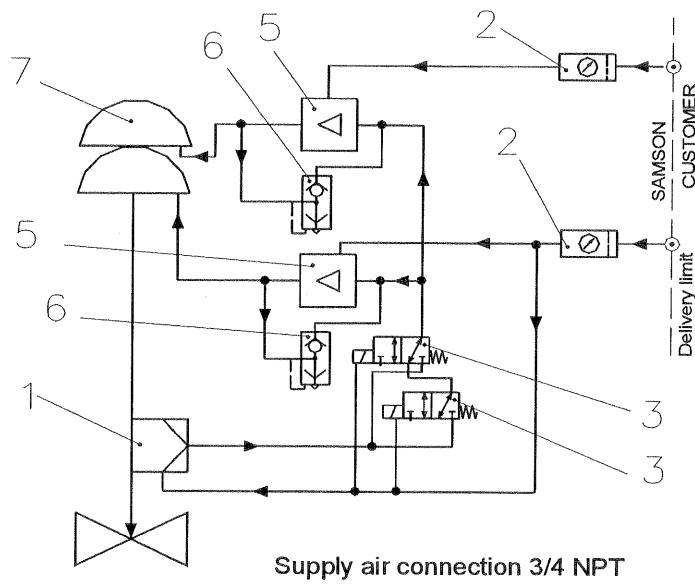
**Funktion / Function**



# Verrohrungsplan / Hook up Plan\ No. 25

<b>SAMSON No:</b>	616 100
<b>Project:</b>	2nd ZAGROS Methanol Plant
<b>Date:</b>	2004-09-01
<b>Name:</b>	V12/sro

<b>Revison:</b>			
-----------------	--	--	--



<b>Pos.</b>	<b>Meßstelle</b>
<b>Pos.</b>	<b>Tag No.</b>
	FV-101019
	FV-101039

Pos	Stck.	Bezeichnung	Typ / Fabr.	pn. Anschl.	Sachnr.
Pos	Qty.	Description	Type / Manuf.	pneu. Con.	Part No.
1	2	Stellungsregler/ Positioner	3780-120 Gauges IP65 Eex ia	1 1/4" NPT	
2	1	Zuluftstation/ Air set	B74G-6AK-AP3-RMN Norgren	3/4" NPT	
3	2	Magnetventil/ Solenoid valve	3963-1353 SAMSOMATIC	1 1/4" NPT	
4		Drossel/ Throttle valve			
5	2	Volumenverstärker/ Booster	2625 Fisher	3/4" NPT	
6	2	Schnellentlüfter/ Quick exhaust	8502-0144	G 3/4"	
7	1	Antrieb/ Actuator	3271 Tandem 2800x2cm2	1 1/4" NPT	
8		Verblockrelais/ Lock up valve			
9		Sonstiges / Miscellaneous			
10					
11					
12		Pneu. Anschlußverschraubung / Pn. Connection			
13		Ausblaseschalldämpfer/ Vent Filter			
14		Filter/ Filter	<input type="checkbox"/> IP54 <input type="checkbox"/> IP65		
15					
<b>Rohr/ Pipe</b>	<b>Größe/ Size</b>		<b>Dimensions</b>	<b>Material</b>	
	1 1/2		{cm} {inch}	St.St.	
<b>Fitting</b>	<input type="checkbox"/> ERMETO <input checked="" type="checkbox"/> SWAGELOK <input type="checkbox"/> PARKER <input type="checkbox"/> .....				
<b>Stellzeit/ Stroking time</b>	Bewegungsrichtung/ Direction		100 ... 0%	0...100%	ON/OFF mit Magnetventil (with Solenoidvalve)
	Vorgabe/ requested [s]				
	Gemessen/ measured [s]				

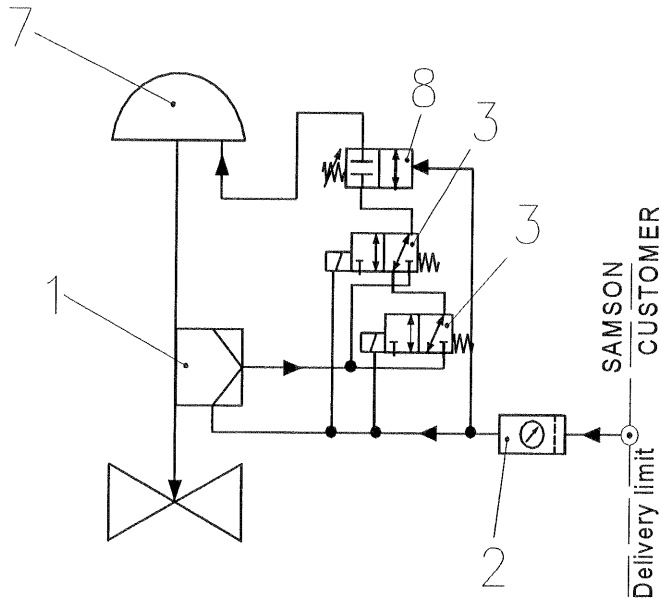
**Funktion / Function**



## Verrohrungsplan / Hook up Plan No. 26

<b>SAMSON No:</b>	616 100
<b>Project:</b>	2nd ZAGROS Methanol Plant
<b>Date:</b>	2004-09-01
<b>Name:</b>	V12/sro

<b>Revison:</b>				
-----------------	--	--	--	--



Supply air connection 1/2 NPT

<b>Pos.</b>	<b>Meßstelle</b>
<b>Pos.</b>	<b>Tag No.</b>
	FV-101021

Pos	Stck.	Bezeichnung	Typ / Fabr.	pne. Anschl.	Sachnr.
Pos	Qty.	Description	Type / Manuf.	pneu. Con.	Part No.
1	1	Stellungsregler/ Positioner	3780-100 Gauges IP65 Eex ia	1¼" NPT	
2	1	Zuluftstation/ Air set	B74G-4AK-AP3-RMN Norgren	1¼" NPT	
3	2	Magnetventil/ Solenoid valve	3963-1353 SAMSOMATIC	1¼" NPT	
4		Drossel/ Throttle valve			
5		Volumenverstärker/ Booster			
6		Schnellentlüfter/ Quick exhaust			
7	1	Antrieb/ Actuator	3277-700cm2 SAMSON	1¼" NPT	
8	1	Verblockrelais/ Lock up valve	3709-1		
9		Sonstiges / Miscellaneous			
10					
11					
12		Pneu. Anschlußverschraubung / Pn. Connection			
13		Ausblaseschalldämpfer/ Vent Filter			
14		Filter/ Filter	<input type="checkbox"/> IP54 <input type="checkbox"/> IP65		
15					

<b>Rohr/ Pipe</b>	<b>Größe/ Size</b>	<b>Dimensions</b>	<b>Material</b>
	1½	{cm} {inch}	St.St.
<b>Fitting</b>	<input type="checkbox"/> ERMETO <input checked="" type="checkbox"/> SWAGELOK <input type="checkbox"/> PARKER <input type="checkbox"/> .....		
<b>Stellzeit/ Stroking time</b>	Bewegungsrichtung/ Direction	100 ... 0%	0...100%
	Vorgabe/ requested [s]		
	Gemessen/ measured [s]		

**Funktion / Function**

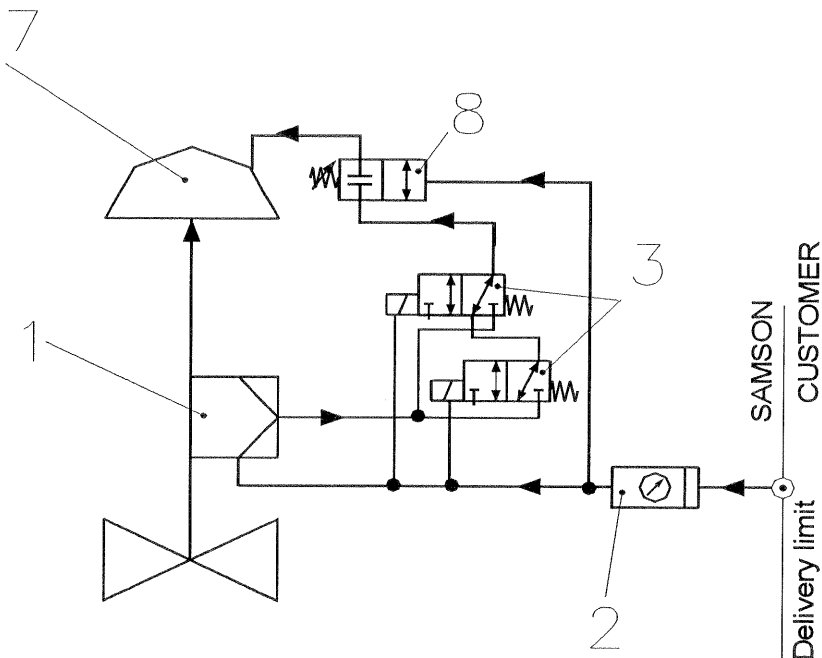


Verrohrungsplan / Hook up  
Plan\ No. 27

SAMSON No:	616 100
Project:	2nd ZAGROS Methanol Plant
Date:	2004-09-01
Name:	V12/sro

Revison:

Pos.	Meßstelle
Pos.	Tag No.
	FV-101122
	FV-101125



Supply air connection 1/2 NPT

Pos	Stck.	Bezeichnung	Typ / Fabr.	pn. Anschl.	Sachnr.
Pos	Qty.	Description	Type / Manuf.	pneu. Con.	Part No.
1	1	Stellungsregler/ Positioner	3780-100 Gauges IP65 Eex ia	1 1/4" NPT	
2	1	Zulufstation/ Air set	B74G-4AK-AP3-RMN Norgren	1 1/4" NPT	
3	2	Magnetventil/ Solenoid valve	3963-1353 SAMSOMATIC	1 1/4" NPT	
4		Drossel/ Throttle valve			
5		Volumenverstärker/ Booster			
6		Schnellentlüfter/ Quick exhaust			
7	1	Antrieb/ Actuator	3277-350\ 700cm2 SAMSON	1 1/4" NPT	
8	1	Verblockrelais/ Lock up valve	3709-1		
9		Sonstiges / Miscellaneous			
10					
11					
12		Pneu. Anschlußverschraubung / Pn. Connector			
13		Ausblaseschalldämpfer/ Vent Filter			
14		Filter/ Filter	<input type="checkbox"/> IP54 <input type="checkbox"/> IP65		
15					
Rohr/ Pipe	Größe/ Size		Dimensions		Material
	112		[cm] [inch]		St.St.
Fitting	<input type="checkbox"/> ERMETO <input checked="" type="checkbox"/> SWAGELOK <input type="checkbox"/> PARKER <input type="checkbox"/> .....				
Stellzeit/ Stroking time	Bewegungsrichtung/ Direction		100 ... 0%	0...100%	ON/OFF mit Magnetventil (with Solenoidvalve)
	Vorgabe/ requested [s]				
	Gemessen/ measured [s]				

Funktion / Function

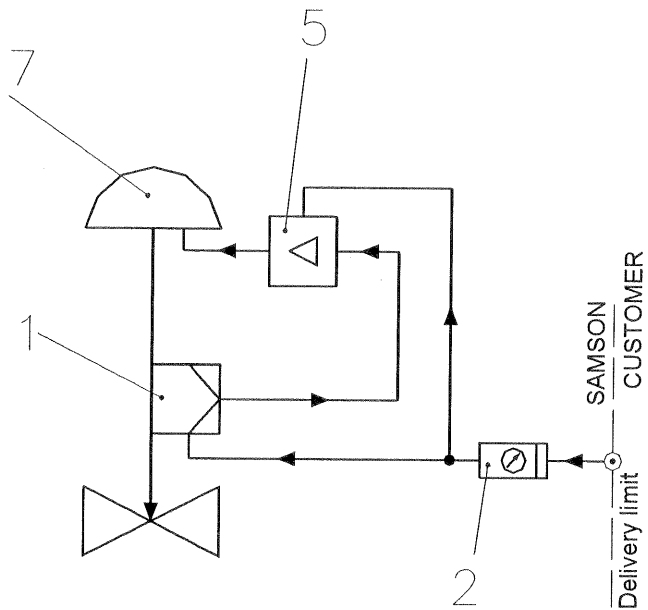




Verrohrungsplan / Hook up  
Plan\ No. 1 b (3271)

SAMSON No:	616 100
Project:	2 nd ZAGROS Methanol Plant
Date:	2005-06-01
Name:	V12/sro

Revison: \_\_\_\_\_



Supply air connection 1/2 NPT

Pos.	Meßstelle
Pos.	Tag No.
	FV-150610
	FV150636
	PV-200307B
	FV-300408
	LV-300406
	LV-300407
	LV-300609

Pos	Stck.	Bezeichnung	Typ / Fabr.	pn. Anschl.	Sachnr.
Pos	Qty.	Description	Type / Manuf.	pneu. Con.	Part No.
1	1	Stellungsregler/ Positioner	3787-100 Gauges IP65 Eex ia	1¼" NPT	
2	1	Zuluftstation/ Air set	B74G-6AK-AP3-RMN Norgren	3¼" NPT	
3		Magnetventil/ Solenoid valve			
4		Drossel/ Throttle valve			
5	1	Volumenverstärker/ Booster	8523-0084 SMC EIL100	G 3/8"	
6		Schnellentlüfter/ Quick exhaust			
7	1	Antrieb/ Actuator	3271-1400\2800cm2 SAMSON	1¼" NPT	
8		Verblockrelais/ Lock up valve			
9		Sonstiges / Miscellaneous			
10					
11					
12		Pneu. Anschlußverschraubung / Pn. Connection			
13		Ausblaseschalldämpfer/ Vent Filter			
14		Filter/ Filter	<input type="checkbox"/> IP54 <input type="checkbox"/> IP65		
15					

Rohr/ Pipe	Größe/ Size	Dimensions	Material
	1½	{cm} {inch}	St.St.
Fitting	<input type="checkbox"/> ERMETO <input checked="" type="checkbox"/> SWAGELOK <input type="checkbox"/> PARKER <input type="checkbox"/> .....		
Stellzeit/ Stroking time	Bewegungsrichtung/ Direction	100 ... 0%	0...100% ON/OFF mit Magnetventil (with Solenoidvalve)
	Vorgabe/ requested [s]		
	Gemessen/ measured [s]		

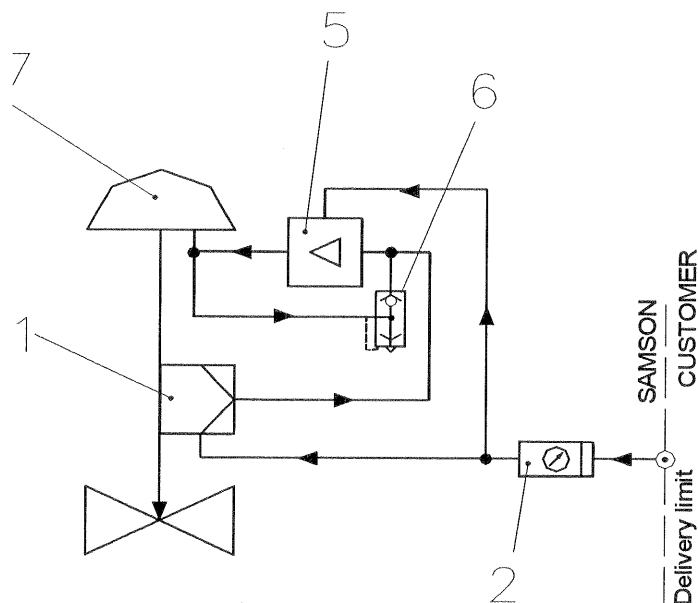
Funktion / Function



## Verrohrungsplan / Hook up Plan\ No. 1 d

<b>SAMSON No:</b>	616 100
<b>Project:</b>	2 nd ZAGROS Methanol Plant
<b>Date:</b>	2005-06-01
<b>Name:</b>	V12/sro

Revison: \_\_\_\_\_



Supply air connection 1/2 NPT

<b>Pos.</b>	<b>Meßstelle</b>
<b>Pos.</b>	<b>Tag No.</b>
	PV-250102A

Pos	Stck.	Bezeichnung	Typ / Fabr.	pn. Anschl.	Sachnr.
Pos	Qty.	Description	Type / Manuf.	pneu. Con.	Part No.
1	1	Stellungsregler/ Positioner	3787-100 Gauges IP65 Eex ia	1 1/4" NPT	
2	1	Zuluftstation/ Air set	B74G-6AK-AP3-RMN Norgren	3/4" NPT	
3		Magnetventil/ Solenoid valve			
4		Drossel/ Throttle valve			
5	1	Volumenverstärker/ Booster	2625 Fisher	3/4" NPT	
6		Schnellentlüfter/ Quick exhaust	4050414 Herion		8502-0144
7	1	Antrieb/ Actuator	3271-2800 cm2 SAMSON	1 1/4" NPT	
8		Verblockrelais/ Lock up valve			
9		Sonstiges / Miscellaneous			
10					
11					
12		Pneu. Anschlußverschraubung / Pn. Connection			
13		Ausblaseschalldämpfer/ Vent Filter			
14		Filter/ Filter	<input type="checkbox"/> IP54 <input type="checkbox"/> IP65		
15					

<b>Rohr/ Pipe</b>	<b>Größe/ Size</b>	<b>Dimensions</b>	<b>Material</b>
	12	-cm] [inch]	St.St.
<b>Fitting</b>	<input type="checkbox"/> ERMETO <input checked="" type="checkbox"/> SWAGELOK <input type="checkbox"/> PARKER <input type="checkbox"/> .....		
<b>Stellzeit/ Stroking time</b>	<b>Bewegungsrichtung/ Direction</b>	100 ... 0%	0...100%    ON/OFF mit Magnetventil (with Solenoidvalve)
	<b>Vorgabe/ requested [s]</b>		
	<b>Gemessen/ measured [s]</b>		

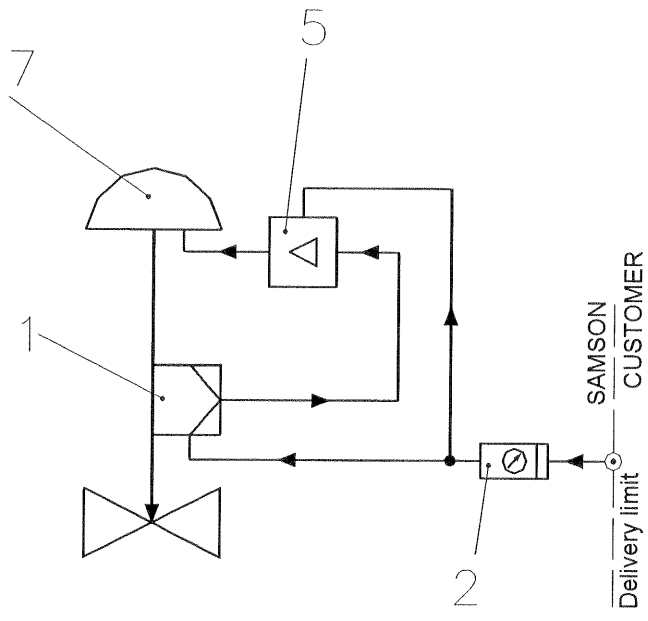
**Funktion / Function**



## Verrohrungsplan / Hook up Plan\ No. 1 c (3271)

<b>SAMSON No:</b>	616 100
<b>Project:</b>	2 nd ZAGROS Methanol Plant
<b>Date:</b>	2005-06-01
<b>Name:</b>	V12/sro

Revison: \_\_\_\_\_



Pos.	Meßstelle
Pos.	Tag No.
	PV-150611
	PV-150612

Pos	Stck.	Bezeichnung	Typ / Fabr.	pn. Anschl.	Sachnr.
Pos	Qty.	Description	Type / Manuf.	pneu. Con.	Part No.
1	1	Stellungsregler/ Positioner	3780-100 Gauges IP65 Eex ia	1¼" NPT	
2	1	Zulufstation/ Air set	B74G-6AK-AP3-RMN Norgren	3¼" NPT	
3		Magnetventil/ Solenoid valve			
4		Drossel/ Throttle valve			
5	1	Volumenverstärker/ Booster	2625 Fisher	3¼" NPT	
6		Schnellentlüfter/ Quick exhaust			
7	1	Antrieb/ Actuator	3271-2800 cm2 SAMSON	1¼" NPT	
8		Verblockrelais/ Lock up valve			
9		Sonstiges / Miscellaneous			
10					
11					
12		Pneu. Anschlußverschraubung / Pn. Connection			
13		Ausblaseschalldämpfer/ Vent Filter			
14		Filter/ Filter	<input type="checkbox"/> IP54 <input type="checkbox"/> IP65		
15					

<b>Rohr/ Pipe</b>	<b>Größe/ Size</b>	<b>Dimensions</b>	<b>Material</b>
	12	[cm] [inch]	St.St.
<b>Fitting</b>	<input type="checkbox"/> ERMETO <input checked="" type="checkbox"/> SWAGELOK <input type="checkbox"/> PARKER <input type="checkbox"/> .....		
<b>Stellzeit/ Stroking time</b>	<b>Bewegungsrichtung/ Direction</b>	100 ... 0%	0...100%    ON/OFF mit Magnetventil (with Solenoidvalve)
	<b>Vorgabe/ requested [s]</b>		
	<b>Gemessen/ measured [s]</b>		

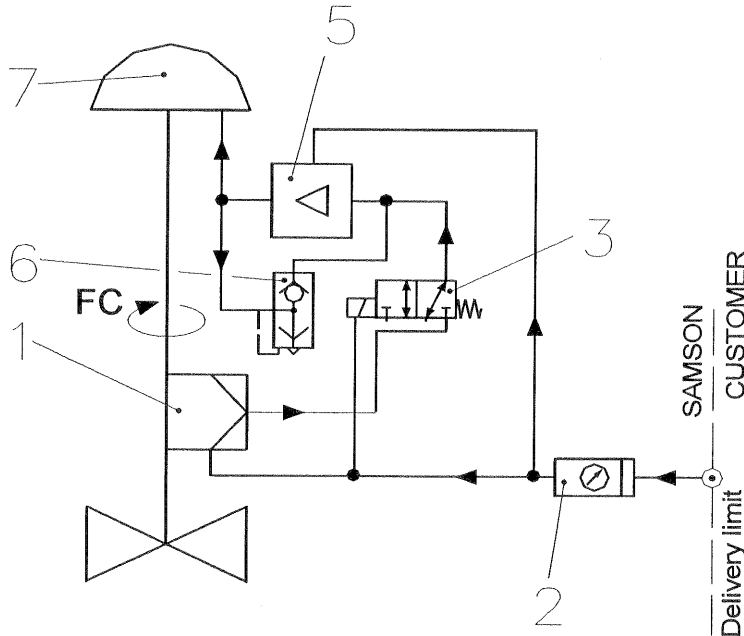
**Funktion / Function**



Verrohrungsplan / Hook up  
Plan\ No. GP-085 (03/12)

SAMSON No:	616 100
Project:	2nd ZAGROS Methanol Plant
Date:	2005-06-01
Name:	V12/sro

Revison: \_\_\_\_\_



Supply air connection 1/2 NPT

Pos.	Meßstelle
Pos.	Tag No.
	FV-100416

Pos	Stck.	Bezeichnung	Typ / Fabr.	pn. Anschl.	Sachnr.
Pos	Qty.	Description	Type / Manuf.	pneu. Con.	Part No.
1	1	Stellungsregler/ Positioner	3780-120 Gauges IP65 Eex ia	1/4" NPT	
2	1	Zuluftstation/ Air set	B74G-6AK-AP3-RMN Norgren	3/4" NPT	
3	1	Magnetventil/ Solenoid valve	3963-1352 SAMSOMATIC	1/4" NPT	
4		Drossel/ Throttle valve			
5	1	Volumenverstärker/ Booster	Type 2625 FISHER	3/4" NPT	
6	1	Schnellentlüfter/ Quick exhaust	4050414 Herion	G 3/4"	8502-0144
7	1	Antrieb/ Actuator	GP-085-385/C3 Rotork	3/4" NPT	
8		Verblockrelais/ Lock up valve			
9		Sonstiges / Miscellaneous			
10					
11					
12		Pneu. Anschlußverschraubung / Pn. Connection			
13		Ausblaseschalldämpfer/ Vent Filter			
14		Filter/ Filter	<input type="checkbox"/> IP54 <input type="checkbox"/> IP65		
15					

Rohr/ Pipe	Größe/ Size	Dimensions	Material
	1/2	{cm} {inch}	St.St.
Fitting	<input type="checkbox"/> ERMETO <input checked="" type="checkbox"/> SWAGELOK <input type="checkbox"/> PARKER <input type="checkbox"/> .....		
Stellzeit/ Stroking time	Bewegungsrichtung/ Direction	100 ... 0%	0...100%
	Vorgabe/ requested [s]		
	Gemessen/ measured [s]		

Funktion / Function

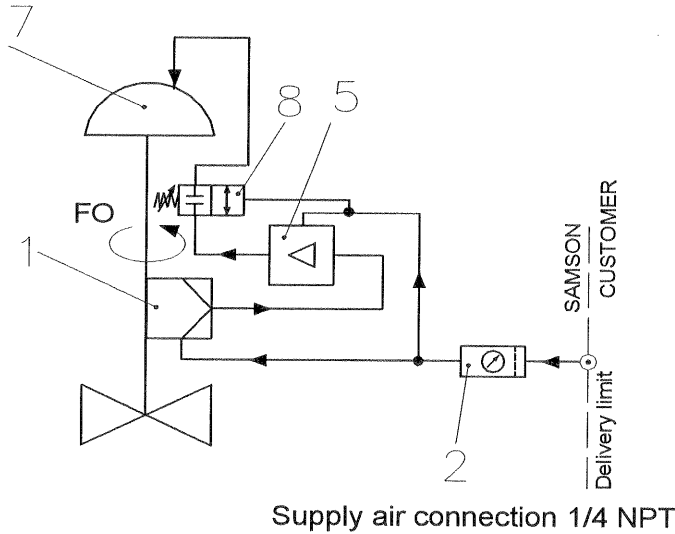


## Verrohrungsplan / Hook up Plan\ No. RC 280 DAM+HW

<b>SAMSON No:</b>	616 100
<b>Project:</b>	2nd ZAGROS Methanol Plant
<b>Date:</b>	2005-06-01
<b>Name:</b>	V12/sro

Revison: \_\_\_\_\_

<b>Pos.</b>	<b>Meßstelle</b>
<b>Pos.</b>	<b>Tag No.</b>
	FV-100428



Pos	Stck.	Bezeichnung	Typ / Fabr.	pn. Anschl.	Sachnr.
Pos	Qty.	Description	Type / Manuf.	pneu. Con.	Part No.
1	1	Stellungsregler/ Positioner	3787-100 Gauges IP65 Eex ia	1¼" NPT	
2	1	Zuluftstation/ Air set	B74G-6AK-AP3-RMN Norgren	3¼" NPT	
3		Magnetventil/ Solenoid valve			
4		Drossel/ Throttle valve			
5	1	Volumenverstärker/ Booster	8523-0084 SMC EIL100	G 3/8"	
6		Schnellentlüfter/ Quick exhaust			
7	1	Antrieb/ Actuator	RC 280 DAM+HW Remote	R 1¼"	
8	1	Verblockrelais/ Lock up valve	3709-1SAMSON	1/4" NPT	
9		Sonstiges / Miscellaneous			
10					
11					
12		Pneu. Anschlußverschraubung / Pn. Connection			
13		Ausblaseschalldämpfer/ Vent Filter			
14		Filter/ Filter	<input type="checkbox"/> IP54 <input type="checkbox"/> IP65		
15					
<b>Rohr/ Pipe</b>	<b>Größe/ Size</b>		<b>Dimensions</b>		<b>Material</b>
	1½		{cm}    {inch}	St.St.	
<b>Fitting</b>	<input type="checkbox"/> ERMETO <input checked="" type="checkbox"/> SWAGELOK <input type="checkbox"/> PARKER <input type="checkbox"/> .....				
<b>Stellzeit/ Stroking time</b>	<b>Bewegungsrichtung/ Direction</b>		100 ... 0%	0...100%	ON/OFF mit Magnetventil (with Solenoidvalve)
	Vorgabe/ requested [s]				
	Gemessen/ measured [s]				

**Funktion / Function**

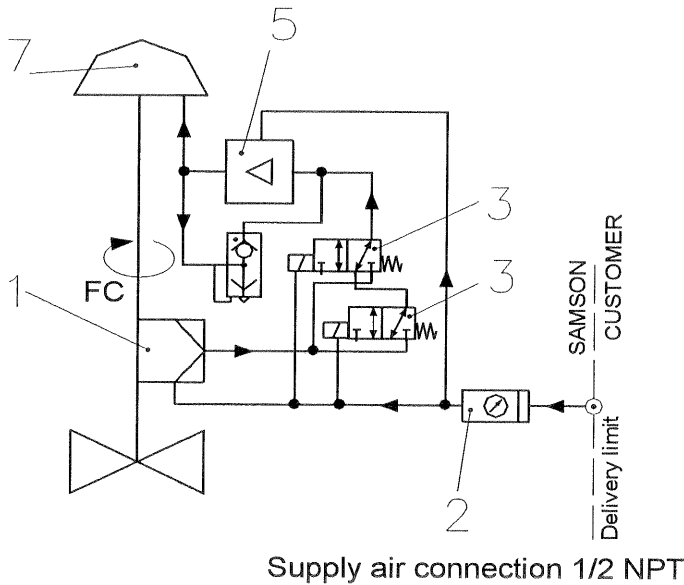


**Verrohrungsplan / Hook up  
Plan\ No.GP-085 (03-02/03)**

<b>SAMSON No:</b>	616 100
<b>Project:</b>	2nd ZAGROS Methanol Plant
<b>Date:</b>	2005-06-01
<b>Name:</b>	V12/sro

Revison: \_\_\_\_\_

<b>Pos.</b>	<b>Meßstelle</b>
<b>Pos.</b>	<b>Tag No.</b>
	FV-100805
	FV-100807



Pos	Stck.	Bezeichnung	Typ / Fabr.	pn. Anschl.	Sachnr.
Pos	Qty.	Description	Type / Manuf.	pneu. Con.	Part No.
1	1	Stellungsregler/ Positioner	3780-120 Gauges IP65 Eex ia	1/4" NPT	
2	1	Zuluftstation/ Air set	B74G-6AK-AP3-RMN Norgren	3/4" NPT	
3	2	Magnetventil/ Solenoid valve	3963-1352 SAMSOMATIC	1/4" NPT	
4		Drossel/ Throttle valve			
5	1	Volumenverstärker/ Booster	Type 2625 FISHER	3/4" NPT	
6	1	Schnellentlüfter/ Quick exhaust	4050414 Herion	G 3/4"	8502-0144
7		Antrieb/ Actuator	GP-085-385/C3 Rotork	3/4" NPT	
8		Verblockrelais/ Lock up valve			
9		Sonstiges / Miscellaneous			
10					
11					
12		Pneu. Anschlußverschraubung / Pn. Connector			
13		Ausblaseschalldämpfer/ Vent Filter			
14		Filter/ Filter	<input type="checkbox"/> IP54 <input type="checkbox"/> IP65		
15					

Rohr/ Pipe	Größe/ Size	Dimensions	Material
	1/2	[em] [inch]	St.St.
Fitting	<input type="checkbox"/> ERMETO <input checked="" type="checkbox"/> SWAGELOK <input type="checkbox"/> PARKER <input type="checkbox"/> .....		
Stellzeit/ Stroking time	Bewegungsrichtung/ Direction	100 ... 0%	0...100% ON/OFF mit Magnetventil (with Solenoidvalve)
	Vorgabe/ requested [s]		
	Gemessen/ measured [s]		

**Funktion / Function**

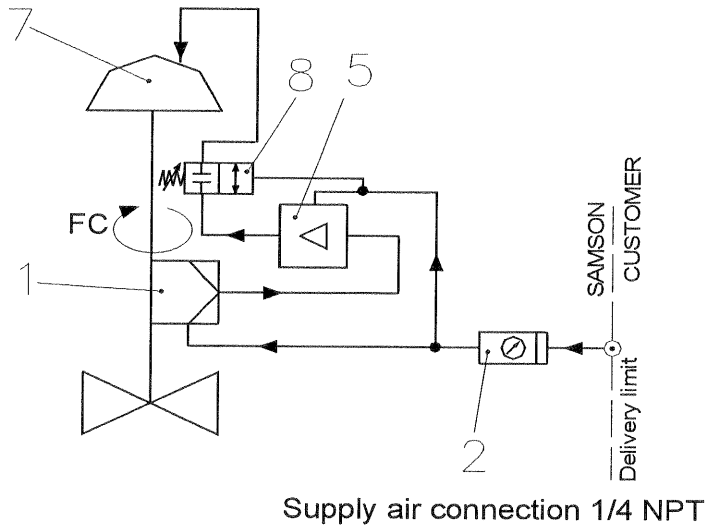


## Verrohrungsplan / Hook up Plan\ No. SRP 2000

<b>SAMSON No.:</b>	616 100
<b>Project:</b>	2nd ZAGROS Methanol Plant
<b>Date:</b>	2005-06-01
<b>Name:</b>	V12/sro

Revison: \_\_\_\_\_

<b>Pos.</b>	<b>Meßstelle</b>
<b>Pos.</b>	<b>Tag No.</b>
	FV-300510A
	FV-300611



Pos	Stck.	Bezeichnung	Typ / Fabr.	pn. Anschl.	Sachnr.
Pos	Qty.	Description	Type / Manuf.	pneu. Con.	Part No.
1	1	Stellungsregler/ Positioner	3787-100 Gauges IP65 Eex ia	1/4" NPT	
2	1	Zuluftstation/ Air set	B74G-6AK-AP3-RMN Norgren	3/4" NPT	
3		Magnetventil/ Solenoid valve			
4		Drossel/ Throttle valve			
5	1	Volumenverstärker/ Booster	8523-0084 SMC EIL100	G 3/8"	
6		Schnellentlüfter/ Quick exhaust			
7	1	Antrieb/ Actuator	SRP 2000 AT	G 3/8"	
8	1	Verblockrelais/ Lock up valve	3709-1SAMSON	1/4" NPT	
9		Sonstiges / Miscellaneous			
10					
11					
12		Pneu. Anschlußverschraubung / Pn. Connection			
13		Ausblaseschalldämpfer/ Vent Filter			
14		Filter/ Filter	<input type="checkbox"/> IP54 <input type="checkbox"/> IP65		
15					
<b>Rohr/ Pipe</b>	<b>Größe/ Size</b>		<b>Dimensions</b>	<b>Material</b>	
	1/2		[cm] [inch]	St.St.	
<b>Fitting</b>	<input type="checkbox"/> ERMETO <input checked="" type="checkbox"/> SWAGELOK <input type="checkbox"/> PARKER <input type="checkbox"/> .....				
<b>Stellzeit/ Stroking time</b>	<b>Bewegungsrichtung/ Direction</b>		100 ... 0%	0...100%	ON/OFF mit Magnetventil (with Solenoidvalve)
	<b>Vorgabe/ requested [s]</b>				
	<b>Gemessen/ measured [s]</b>				

**Funktion / Function**



## Verrohrungsplan / Hook up Plan\ No. GP-130S (03-09)

Revison:

SAMSON No:

616 100

Project:

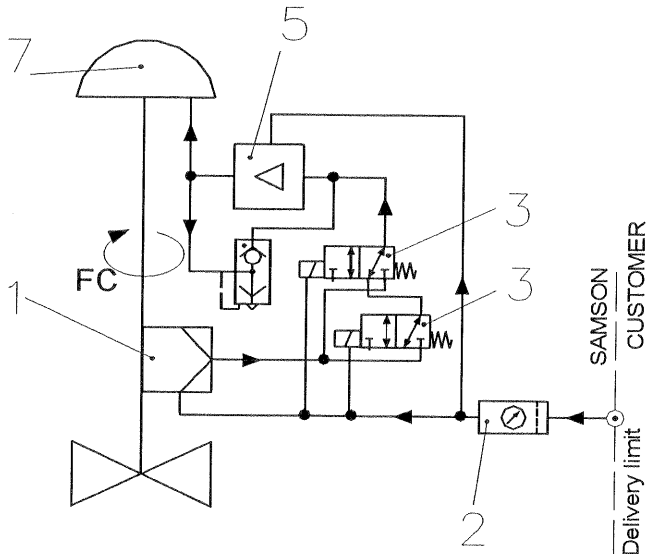
2nd ZAGROS Methanol Plant

Date:

2005-06-01

Name:

V12/sro



Supply air connection 1/2 NPT

Pos.	Meßstelle
Pos.	Tag No.
	HV-200204

Pos	Stck.	Bezeichnung	Typ / Fabr.	pn. Anschl.	Sachnr.
Pos	Qty.	Description	Type / Manuf.	pneu. Con.	Part No.
1	1	Stellungsregler/ Positioner	3780-100 Gauges IP65 Eex ia	1 1/4" NPT	
2	1	Zuluftstation/ Air set	B74G-6AK-AP3-RMN Norgren	3/4" NPT	
3	2	Magnetventil/ Solenoid valve	3963-1352 SAMSOMATIC	1 1/4" NPT	
4		Drossel/ Throttle valve			
5	1	Volumenverstärker/ Booster	Type 2625 FISHER	3/4" NPT	
6	1	Schnellentlüfter/ Quick exhaust	4050414 Herion	G 3/4"	8502-0144
7	1	Antrieb/ Actuator	GP-130S-535/C3 Rotork	1" NPT	
8		Verblockrelais/ Lock up valve			
9		Sonstiges / Miscellaneous			
10					
11					
12		Pneu. Anschlußverschraubung / Pn. Connection			
13		Ausblaseschalldämpfer/ Vent Filter			
14		Filter/ Filter	<input type="checkbox"/> IP54 <input type="checkbox"/> IP65		
15					

Rohr/ Pipe	Größe/ Size		Dimensions		Material	
	1 1/2		{cm}	{inch}	St.St.	
Fitting	<input type="checkbox"/> ERMETO	<input checked="" type="checkbox"/> SWAGELOK	<input type="checkbox"/> PARKER	<input type="checkbox"/> .....		
Stellzeit/ Stroking time	Bewegungsrichtung/ Direction		100 ... 0%	0...100%	ON/OFF mit Magnetventil (with Solenoidvalve)	
	Vorgabe/ requested [s]					
	Gemessen/ measured [s]					

Funktion / Function



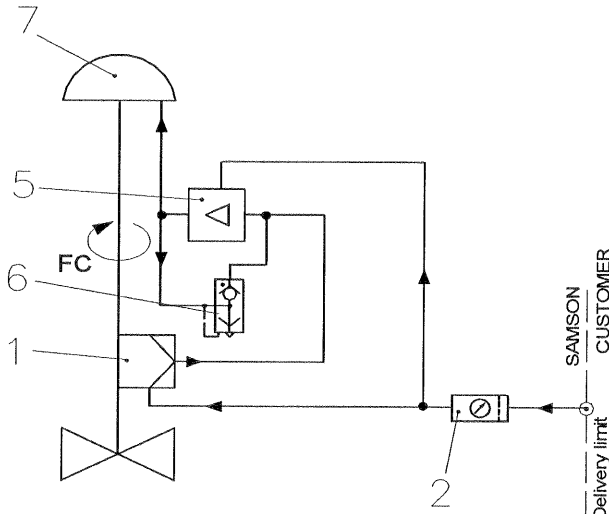




**Verrohrungsplan / Hook up**  
Plan\ GP-085S-385/C3-MH

Revision: \_\_\_\_\_

<b>SAMSON No:</b>	616 100
<b>Project:</b>	2nd ZAGROS Methanol Plant
<b>Date:</b>	2005-06-01
<b>Name:</b>	V12/sro



Supply air connection 1/4 NPT

<b>Pos.</b>	<b>Meßstelle</b>
<b>Pos.</b>	<b>Tag No.</b>
	HV200503

Pos	Stck.	Bezeichnung	Typ / Fabr.	pn. Anschl.	Sachnr.
Pos	Qty.	Description	Type / Manuf.	pneu. Con.	Part No.
1	1	Stellungsregler/ Positioner	3787-100 Gauges IP65 Eex ia	1¼" NPT	
2	1	Zuluftstation/ Air set	B74G-6AK-AP3-RMN Norgren	3¼" NPT	
3		Magnetventil/ Solenoid valve			
4		Drossel/ Throttle valve			
5	1	Volumenverstärker/ Booster	2625	3/4" NPT	
6	1	Schnellentlüfter/ Quick exhaust	8502-0144	G 3/4"	
7	1	Antrieb/ Actuator	GP-085S-385/C3-MH Rotork	3/4" NPT	
8		Verblockrelais/ Lock up valve			
9		Sonstiges / Miscellaneous			
10					
11					
12		Pneu. Anschlußverschraubung / Pn. Connector			
13		Ausblaseschalldämpfer/ Vent Filter			
14		Filter/ Filter	<input type="checkbox"/> IP54 <input type="checkbox"/> IP65		
15					

<b>Rohr/ Pipe</b>	<b>Größe/ Size</b>	<b>Dimensions</b>		<b>Material</b>	
	1½	{cm}	[inch]	St.St.	
<b>Fitting</b>	<input type="checkbox"/> ERMETO <input checked="" type="checkbox"/> SWAGELOK <input type="checkbox"/> PARKER <input type="checkbox"/> .....				
<b>Stellzeit/ Stroking time</b>	<b>Bewegungsrichtung/ Direction</b>	100 ... 0%	0...100%	ON/OFF mit Magnetventil (with Solenoidvalve)	
	<b>Vorgabe/ requested [s]</b>				
	<b>Gemessen/ measured [s]</b>				

**Funktion / Function**

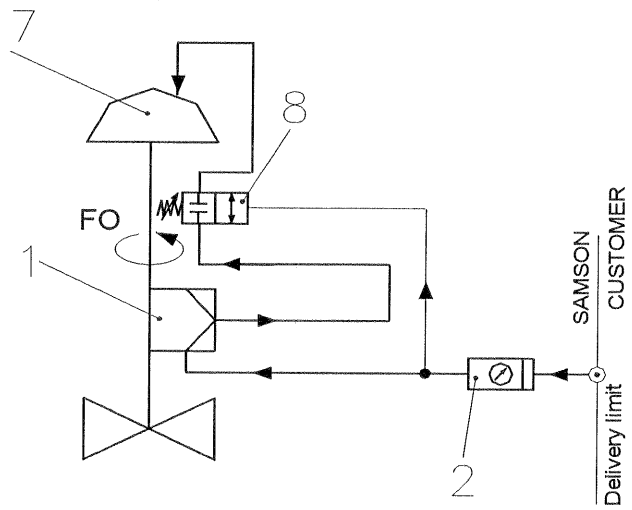


# Verrohrungsplan / Hook up Plan\ No. RC200

SAMSON No:	616 100
Project:	2nd ZAGROS Methanol Plant
Date:	2005-06-01
Name:	V12/sro

Revison:				
----------	--	--	--	--

Pos.	Meßstelle
Pos.	Tag No.
	LV-300305



Supply air connection 1/4 NPT

Pos	Stck.	Bezeichnung	Typ / Fabr.	pn. Anschl.	Sachnr.
Pos	Qty.	Description	Type / Manuf.	pneu. Con.	Part No.
1	1	Stellungsregler/ Positioner	3787-100 Gauges IP65 Eex ia	1 1/4" NPT	
2	1	Zulufstation/ Air set	B74G-6AK-AP3-RMN Norgren	3/4" NPT	
3		Magnetventil/ Solenoid valve			
4		Drossel/ Throttle valve			
5		Volumenverstärker/ Booster			
6		Schnellentlüfter/ Quick exhaust			
7	1	Antrieb/ Actuator	R200 Remote Control	R 1/4"	
8	1	Verblockrelais/ Lock up valve	3709-1		
9		Sonstiges / Miscellaneous			
10					
11					
12		Pneu. Anschlußverschraubung / Pn. Connector			
13		Ausblaseschalldämpfer/ Vent Filter			
14		Filter/ Filter	<input type="checkbox"/> IP54 <input type="checkbox"/> IP65		
15					
Rohr/ Pipe	Größe/ Size		Dimensions		Material
	1 1/2		[cm] [inch]		St.St.
Fitting	<input type="checkbox"/> ERMETO <input checked="" type="checkbox"/> SWAGELOK <input type="checkbox"/> PARKER <input type="checkbox"/> .....				
Stellzeit/ Stroking time	Bewegungsrichtung/ Direction		100 ... 0%	0...100%	ON/OFF mit Magnetventil (with Solenoidvalve)
	Vorgabe/ requested [s]				
	Gemessen/ measured [s]				

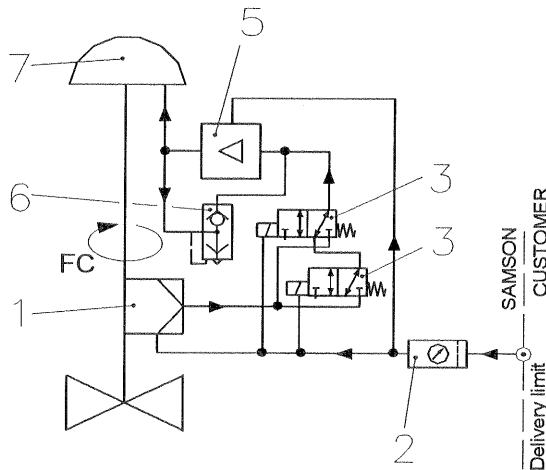
Funktion / Function



## Verrohrungsplan / Hook up Plan\ No. GP-100S

<b>SAMSON No:</b>	616 100
<b>Project:</b>	2nd ZAGROS Methanol Plant
<b>Date:</b>	2005-06-01
<b>Name:</b>	V12/sro

Revison: \_\_\_\_\_



Supply air connection 1/2 NPT

<b>Pos.</b>	<b>Meßstelle</b>
<b>Pos.</b>	<b>Tag No.</b>
	PV-100801

Pos	Stck.	Bezeichnung	Typ / Fabr.	pn. Anschl.	Sachnr.
Pos	Qty.	Description	Type / Manuf.	pneu. Con.	Part No.
1	1	Stellungsregler/ Positioner	3780-100 Gauges IP65 Eex ia	1 1/4" NPT	
2	1	Zuluftstation/ Air set	B74G-6AK-AP3-RMN Norgren	3/4" NPT	
3	2	Magnetventil/ Solenoid valve	3963-1352 SAMSOMATIC	1 1/4" NPT	
4		Drossel/ Throttle valve			
5	1	Volumenverstärker/ Booster	Type 2625 FISHER	3/4" NPT	
6	1	Schnellentlüfter/ Quick exhaust	4050414 Herion	G 3/4"	8502-0144
7	1	Antrieb/ Actuator	GP-100S-485/C1 Rotork	3/4" NPT	
8		Verblockrelais/ Lock up valve			
9		Sonstiges / Miscellaneous			
10					
11					
12		Pneu. Anschlußverschraubung / Pn. Connector			
13		Ausblaseschalldämpfer/ Vent Filter			
14		Filter/ Filter	<input type="checkbox"/> IP54 <input type="checkbox"/> IP65		
15					
<b>Rohr/ Pipe</b>		<b>Größe/ Size</b> 1 1/2	<b>Dimensions</b> [cm] [inch]	<b>Material</b> St.St.	
<b>Fitting</b>	<input type="checkbox"/> ERMETO <input checked="" type="checkbox"/> SWAGELOK <input type="checkbox"/> PARKER <input type="checkbox"/> .....				
<b>Stellzeit/ Stroking time</b>	<b>Bewegungsrichtung/ Direction</b>		100 ... 0%	0...100%	ON/OFF mit Magnetventil (with Solenoidvalve)
	<b>Vorgabe/ requested [s]</b>				
	<b>Gemessen/ measured [s]</b>				

**Funktion / Function**



**Verrohrungsplan / Hook up  
Plan\ GP-085 (03-07)**

Revison: \_\_\_\_\_

SAMSON No:

616 100

Project:

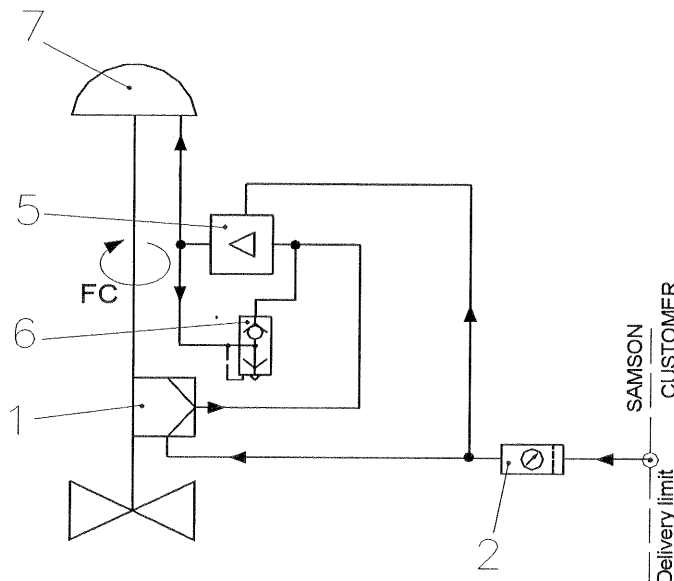
2nd ZAGROS Methanol Plant

Date:

2005-06-01

Name:

V12/sro



Supply air connection 1/4 NPT

Pos.	Meßstelle
Pos.	Tag No.
	PV200409

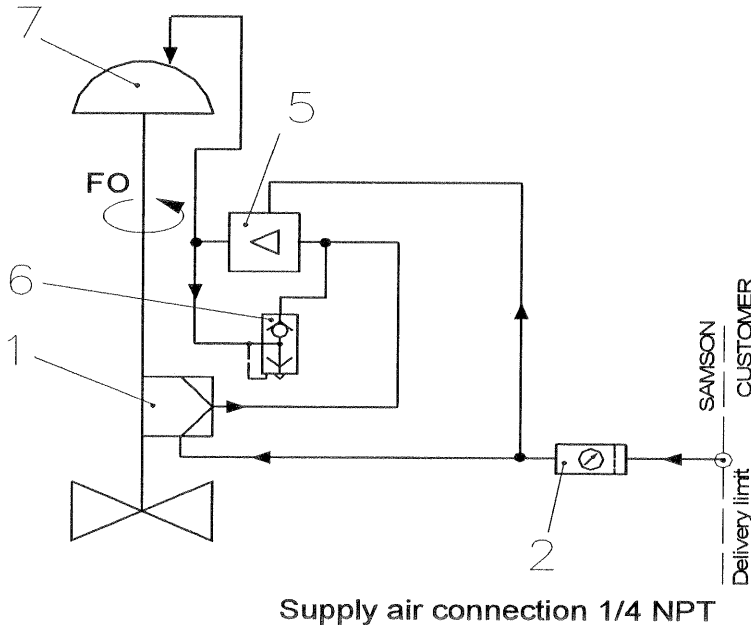
Pos	Stck.	Bezeichnung	Typ / Fabr.	pn. Anschl.	Sachnr.
Pos	Qty.	Description	Type / Manuf.	pneu. Con.	Part No.
1	1	Stellungsregler/ Positioner	3787-100 Gauges IP65 Eex ia	1/4" NPT	
2	1	Zuluftstation/ Air set	B74G-6AK-AP3-RMN Norgren	3/4" NPT	
3		Magnetventil/ Solenoid valve			
4		Drossel/ Throttle valve			
5	1	Volumenverstärker/ Booster	2625	3/4" NPT	
6	1	Schnellentlüfter/ Quick exhaust	8502-0144	G 3/4"	
7	1	Antrieb/ Actuator	GP-085-385/C3 Rotork	3/4" NPT	
8		Verblockrelais/ Lock up valve			
9		Sonstiges / Miscellaneous			
10					
11					
12		Pneu. Anschlußverschraubung / Pn. Connector			
13		Ausblaseschalldämpfer/ Vent Filter			
14		Filter/ Filter	<input type="checkbox"/> IP54 <input type="checkbox"/> IP65		
15					
Rohr/ Pipe	Größe/ Size		Dimensions		Material
	112		{cm} {inch}		St.St.
Fitting	<input type="checkbox"/> ERMETO <input checked="" type="checkbox"/> SWAGELOK <input type="checkbox"/> PARKER <input type="checkbox"/> .....				
Stelzeit/ Stroking time	Bewegungsrichtung/ Direction		100 ... 0%	0... 100%	ON/OFF mit Magnetventil (with Solenoidvalve)
	Vorgabe/ requested [s]				
	Gemessen/ measured [s]				
<b>Funktion / Function</b>					



### Verrohrungsplan / Hook up Plan\ No. GP-065S (03-04)

<b>SAMSON No:</b>	616 100
<b>Project:</b>	2nd ZAGROS Methanol Plant
<b>Date:</b>	2005-06-01
<b>Name:</b>	V12/sro

Revision: \_\_\_\_\_



<b>Pos.</b>	<b>Meßstelle</b>
<b>Pos.</b>	<b>Tag No.</b>
	TV-100904A

Pos	Stck.	Bezeichnung	Typ / Fabr.	pn. Anschl.	Sachnr.
Pos	Qty.	Description	Type / Manuf.	pneu. Con.	Part No.
1	1	Stellungsregler/ Positioner	3787-100 Gauges IP65 Eex ia	1/4" NPT	
2	1	Zulufstation/ Air set	B74G-6AK-AP3-RMN Norgren	3/4" NPT	
3		Magnetventil/ Solenoid valve			
4		Drossel/ Throttle valve			
5	1	Volumenverstärker/ Booster	2625	3/4" NPT	
6	1	Schnellentlüfter/ Quick exhaust	4050414 Herion	G 3/4"	8502-0144
7	1	Antrieb/ Actuator	GP-065S-335/C2 Rotork	1/2" NPT	
8		Verblockrelais/ Lock up valve			
9		Sonstiges / Miscellaneous			
10					
11					
12		Pneu. Anschlußverschraubung / Pn. Connector			
13		Ausblaseschalldämpfer/ Vent Filter			
14		Filter/ Filter	<input type="checkbox"/> IP54 <input type="checkbox"/> IP65		
15					
<b>Rohr/ Pipe</b>		<b>Größe/ Size</b> 1/2	<b>Dimensions</b> [cm] [inch]	<b>Material</b> St.St.	
<b>Fitting</b>		<input type="checkbox"/> ERMETO <input checked="" type="checkbox"/> SWAGELOK <input type="checkbox"/> PARKER <input type="checkbox"/> .....			
<b>Stellzeit/ Stroking time</b>		<b>Bewegungsrichtung/ Direction</b>	100 ... 0%	0...100%	ON/OFF mit Magnetventil (with Solenoidvalve)
		Vorgabe/ requested [s]			
		Gemessen/ measured [s]			

**Funktion / Function**





## Verrohrungsplan / Hook up Plan\ No. GP-100S (03-06)

Revison:

SAMSON No:

616 100

Project:

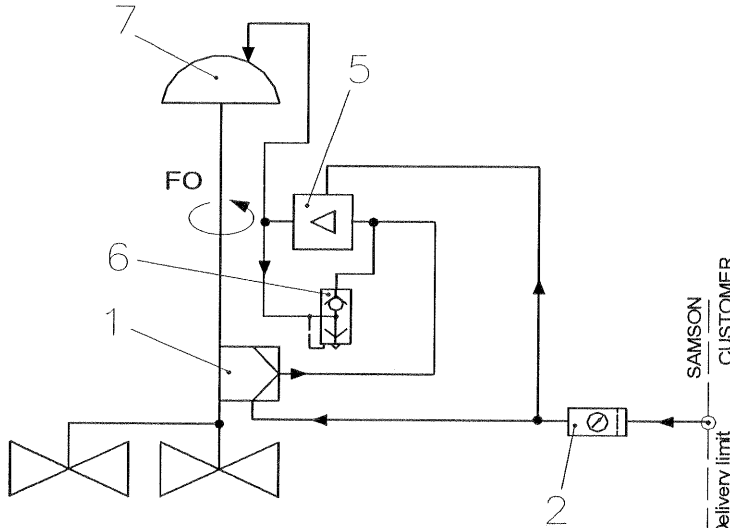
2nd ZAGROS Methanol Plant

Date:

2005-06-01

Name:

V12/sro



Supply air connection 1/4 NPT

Pos.	Meßstelle
Pos.	Tag No.
	TV-101204A/B

Pos	Stck.	Bezeichnung	Typ / Fabr.	pn. Anschl.	Sachnr.
Pos	Qty.	Description	Type / Manuf.	pneu. Con.	Part No.
1	1	Stellungsregler/ Positioner	3787-100 Gauges IP65 Eex ia	1/4" NPT	
2	1	Zuluftstation/ Air set	B74G-6AK-AP3-RMN Norgren	3/4" NPT	
3		Magnetventil/ Solenoid valve			
4		Drossel/ Throttle valve			
5	1	Volumenverstärker/ Booster	2625	3/4" NPT	
6	1	Schnellentlüfter/ Quick exhaust	4050414 Herion	G 3/4"	8502-0144
7	1	Antrieb/ Actuator	GP-100S-485/DA+MH Rotork	3/4" NPT	
8		Verblockrelais/ Lock up valve			
9		Sonstiges / Miscellaneous			
10					
11					
12		Pneu. Anschlußverschraubung / Pn. Connection			
13		Ausblaseschalldämpfer/ Vent Filter			
14		Filter/ Filter	<input type="checkbox"/> IP54 <input type="checkbox"/> IP65		
15					

Rohr/ Pipe	Größe/ Size		Dimensions		Material
	1/2		{cm} {inch}	St.St.	
Fitting	<input type="checkbox"/> ERMETO	<input checked="" type="checkbox"/> SWAGELOK	<input type="checkbox"/> PARKER	<input type="checkbox"/> .....	
Stellzeit/ Stroking time	Bewegungsrichtung/ Direction		100 ... 0%	0....100%	ON/OFF mit Magnetventil (with Solenoidvalve)
	Vorgabe/ requested [s]				
	Gemessen/ measured [s]				

Funktion / Function

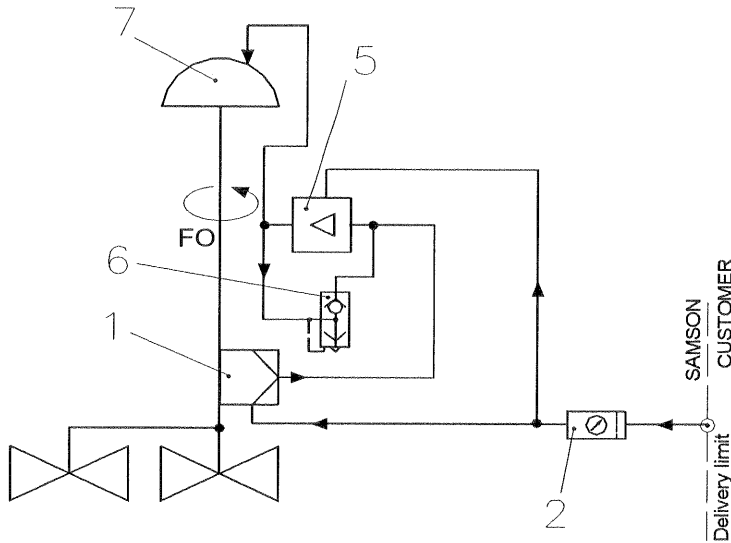




**Verrohrungsplan / Hook up  
Plan\ No.GP-130S (03-08)**

<b>SAMSON No:</b>	616 100
<b>Project:</b>	2nd ZAGROS Methanol Plant
<b>Date:</b>	2005-06-01
<b>Name:</b>	V12/sro

Revision: \_\_\_\_\_



Supply air connection 1/4 NPT

<b>Pos.</b>	<b>Meßstelle</b>
<b>Pos.</b>	<b>Tag No.</b>
	TV-200521A/B

Pos	Stck.	Bezeichnung	Typ / Fabr.	pn. Anschl.	Sachnr.
Pos	Qty.	Description	Type / Manuf.	pneu. Con.	Part No.
1	1	Stellungsregler/ Positioner	3787-100 Gauges IP65 Eex ia	1/4" NPT	
2	1	Zuluftstation/ Air set	B74G-6AK-AP3-RMN Norgren	3/4" NPT	
3		Magnetventil/ Solenoid valve			
4		Drossel/ Throttle valve			
5	1	Volumenverstärker/ Booster	2625	3/4" NPT	
6	1	Schnellentlüfter/ Quick exhaust	4050414 Herion	G 3/4"	8502-0144
7	1	Antrieb/ Actuator	GP-130S-535/DA Rotork	1" NPT	
8		Verblockrelais/ Lock up valve			
9		Sonstiges / Miscellaneous			
10					
11					
12		Pneu. Anschlußverschraubung / Pn. Connection			
13		Ausblaseschalldämpfer/ Vent Filter			
14		Filter/ Filter	<input type="checkbox"/> IP54 <input type="checkbox"/> IP65		
15					

<b>Rohr/ Pipe</b>	<b>Größe/ Size</b>	<b>Dimensions</b>	<b>Material</b>
	1/2	{cm} {inch}	St.St.
<b>Fitting</b>	<input type="checkbox"/> ERMETO <input checked="" type="checkbox"/> SWAGELOK <input type="checkbox"/> PARKER <input type="checkbox"/> .....		
<b>Stellzeit/ Stroking time</b>	<b>Bewegungsrichtung/ Direction</b>	100 ... 0%	0....100%
	<b>Vorgabe/ requested [s]</b>		
	<b>Gemessen/ measured [s]</b>		

**Funktion / Function**

### Index of Revisions

Rev.	Sheet	Prepared, revised		Checked	Approved			Remark, kind of revision
		Name	Date	Name	Name	Date	Status	
00	1 - 16	V12/sro	2004-09-01	V12/lf	V12/di	2004-09-10	IFR	FIRST ISSUE
01	34	V12/sro	2005-06-01	V12/lf	V12/di	2005-06-10	FI	FINAL ISSUE

Copying of this document, and giving it to others and the use or communication of the contents thereof, are forbidden without express authority by Lurgi. Offenders are liable to the payment of damages. All rights are reserved in the event of the grant of a patent or the registration of a utility model or design.