



Copying of this document, and giving it to others and the use or communication of the contents thereof, are forbidden without express authority by Lurgi. Offenders are liable to the payment of damages. All rights are reserved in the event of the grant of a patent or the registration of a utility model or design.



## Hook ups

V12/sro	2004-09-01	V12/lf	V12/di	2004-09-10		FIRST ISSUE / FINAL ISSUE			
Name	Date	Name	Name	Date	Status				
Prepared, revised		Checked	Approved			Remark, kind of revision			
<div>Contractor:</div> <div></div> <div>PETROCHEMICAL INDUSTRIES DESIGN &amp; ENGINEERING CO. شرکت طراحی و مهندسی صنایع پتروشیمی</div>						Owner Project No:	Contractor Order No:	Q.L.	DCC
						232000	1182-POR-IN-605	-	-
							Vendor Order Ref.		
						616 200			
mg engineering Lurgi	Project Name				Lurgi Doc. No.		Vendor Doc. No.	Sheet / of	Revision
	2nd ZAGROS METHANOL PLANT						SAM-151	1 / 7	00



# Verrohrungsplan / Hook up Plan\ No. 13

SAMSON No:

616 200

Project:

2nd ZAGROS Methanol Plant

Date:

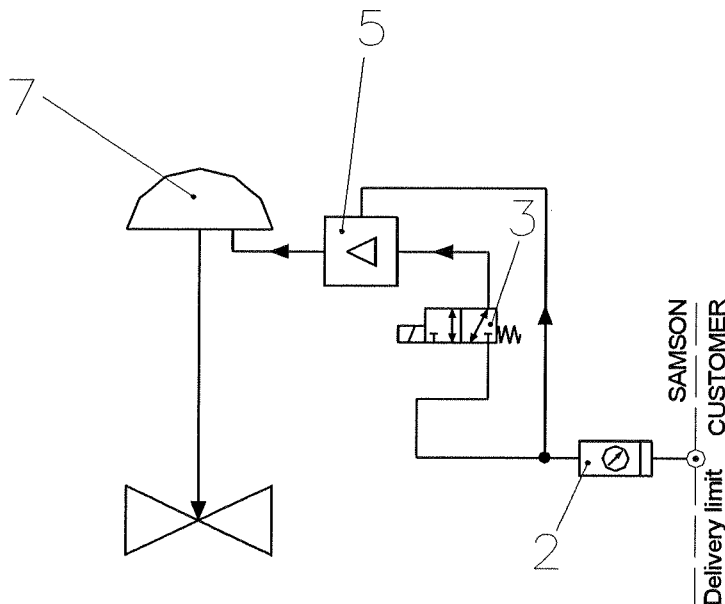
2004-09-01

Name:

V12/sro

Revision:

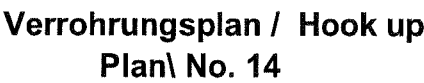
Pos.	Meßstelle
Pos.	Tag No.



Supply air connection 1/2 NPT

Pos	Stck.	Bezeichnung	Typ / Fabr.	pn. Anschl.	Sachnr.		
Pos	Qty.	Description	Type / Manuf.	pneu. Con.	Part No.		
1		Stellungsregler/ Positioner					
2		Zuluftstation/ Air set	B74G-6AK-AP3-RMN Norgren	3/4" NPT			
3		Magnetventil/ Solenoid valve	3963-1353 SAMSOMATIC	1/4" NPT			
4		Drossel/ Throttle valve					
5		Volumenverstärker/ Booster	8523-0084 SMC EIL100	G 3/8"			
6		Schnellentlüfter/ Quick exhaust					
7		Antrieb/ Actuator	3271-1400 cm2 SAMSON	1/4" NPT			
8		Verblockrelais/ Lock up valve					
9		Sonstiges / Miscellaneous					
10							
11							
12		Pneu. Anschlußverschraubung / Pn. Connection					
13		Ausblaseschalldämpfer/ Vent Filter					
14		Filter/ Filter	<input type="checkbox"/> IP54 <input type="checkbox"/> IP65				
15							
Rohr/ Pipe	Größe/ Size		Dimensions	Material			
	1/2		{cm}    {inch}	St.St.			
Fitting	<input type="checkbox"/> ERMETO <input checked="" type="checkbox"/> SWAGELOK <input type="checkbox"/> PARKER <input type="checkbox"/> .....						
Stellzeit/ Stroking time	Bewegungsrichtung/ Direction		100 ... 0%	0....100%	ON/OFF mit Magnetventil (with Solenoidvalve)		
	Vorgabe/ requested [s]						
	Gemessen/ measured [s]						

Funktion / Function



**Revison:**

**SAMSON No:**

616 200

**Project:**

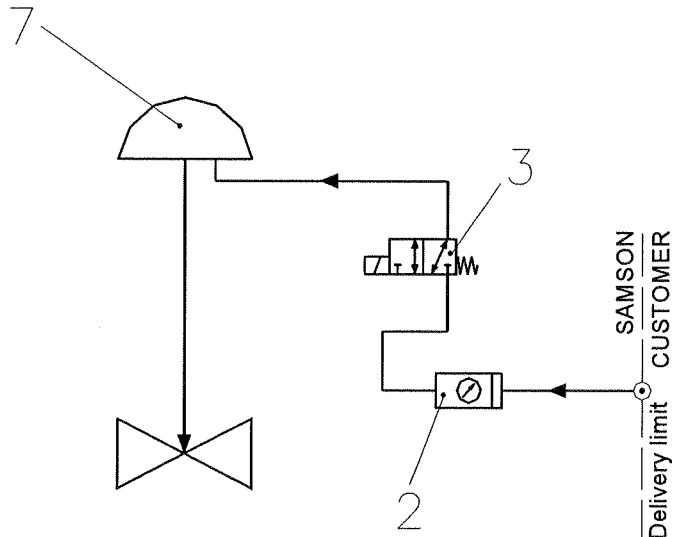
## 2nd ZAGROS Methanol Plant

**Date:**

**2004-09-01**

**Name:**

V12/sro



Supply air connection 1/2 NPT

<b>Pos.</b>	<b>Meßstelle</b>
<b>Pos.</b>	<b>Tag No.</b>
	UV100504
	UV100505
	UV750101

Pos	Stck.	Bezeichnung	Typ / Fabr.		pn. Anschl.	Sachnr.
Pos	Qty.	Description	Type / Manuf.		pneu. Con.	Part No.
1		Stellungsregler/ Positioner				
2		Zuluftstation/ Air set	B74G-4AK-AP3-RMN Norgren		1¼" NPT	
3		Magnetventil/ Solenoid valve	3963-1353 SAMSOMATIC		1¼" NPT	
4		Drossel/ Throttle valve				
5		Volumenverstärker/ Booster				
6		Schnellentlüfter/ Quick exhaust				
7		Antrieb/ Actuator	3277-120/ 700cm2 SAMSON		1¼" NPT	
8		Verblockrelais/ Lock up valve				
9		Sonstiges / Miscellaneous				
10						
11						
12		Pneu. Anschlußverschraubung / Pn. Connector				
13		Ausblaseschalldämpfer/ Vent Filter				
14		Filter/ Filter	<input type="checkbox"/> IP54 <input type="checkbox"/> IP65			
15						
Rohr/ Pipe	Größe/ Size		Dimensions	Material		
	1½		{cm} {inch}	St.St.		
Fitting	<input type="checkbox"/> ERMETO <input checked="" type="checkbox"/> SWAGELOK <input type="checkbox"/> PARKER <input type="checkbox"/> .....					
Stellzeit/ Stroking time	Bewegungsrichtung/ Direction		100 ... 0%	0....100%	ON/OFF mit Magnetventil (with Solenoidvalve)	
	Vorgabe/ requested [s]					
	Gemessen/ measured [s]					

**Funktion / Function**



# Verrohrungsplan / Hook up Plan\ No. 16

SAMSON No:

616 200

Project:

2nd ZAGROS Methanol Plant

Date:

2004-09-01

Name:

V12/sro

Revision:

Pos. Meßstelle

Pos. Tag No.

UV100418

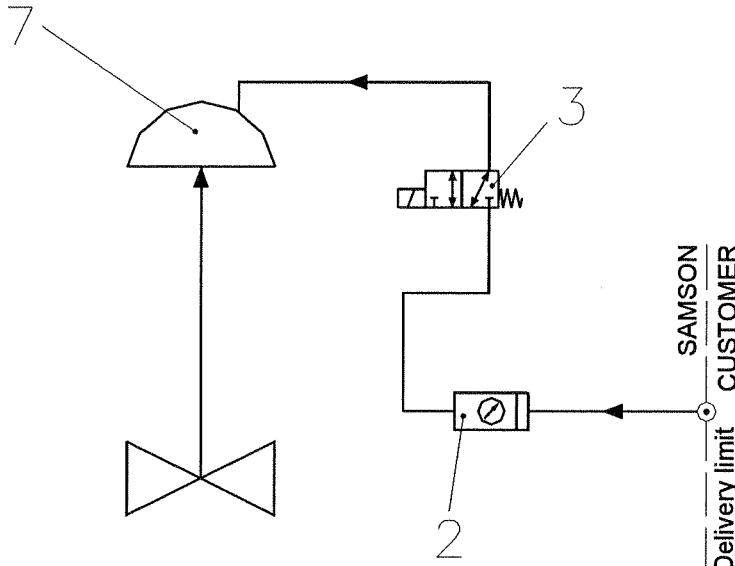
UV100506

UV101227

UV200206

UV200305

UV750103



Supply air connection 1/2 NPT

Pos	Stck.	Bezeichnung	Typ / Fabr.	pn. Anschl.	Sachnr.
Pos	Qty.	Description	Type / Manuf.	pneu. Con.	Part No.
1		Stellungsregler/ Positioner			
2		Zuluftstation/ Air set	B74G-4AK-AP3-RMN Norgren	1/4" NPT	
3		Magnetventil/ Solenoid valve	3963-1353 SAMSOMATIC	1/4" NPT	
4		Drossel/ Throttle valve			
5		Volumenverstärker/ Booster			
6		Schnellentlüfter/ Quick exhaust			
7		Antrieb/ Actuator	3277-120/ 350cm2 SAMSON	1/4" NPT	
8		Verblockrelais/ Lock up valve			
9		Sonstiges / Miscellaneous			
10					
11					
12		Pneu. Anschlußverschraubung / Pn. Connector			
13		Ausblaseschalldämpfer/ Vent Filter			
14		Filter/ Filter	<input type="checkbox"/> IP54 <input type="checkbox"/> IP65		
15					
Rohr/ Pipe	Größe/ Size		Dimensions	Material	
	1/2		{cm} [inch]	St.St.	
Fitting	<input type="checkbox"/> ERMETO <input checked="" type="checkbox"/> SWAGELOK <input type="checkbox"/> PARKER <input type="checkbox"/> .....				
Stellzeit/ Stroking time	Bewegungsrichtung/ Direction		100 ... 0%	0....100%	ON/OFF mit Magnetventil (with Solenoidvalve)
	Vorgabe/ requested [s]				
	Gemessen/ measured [s]				

Funktion / Function



# Verrohrungsplan / Hook up Plan\ No. 28

SAMSON No:

616 200

Project:

2nd ZAGROS Methanol Plant

Date:

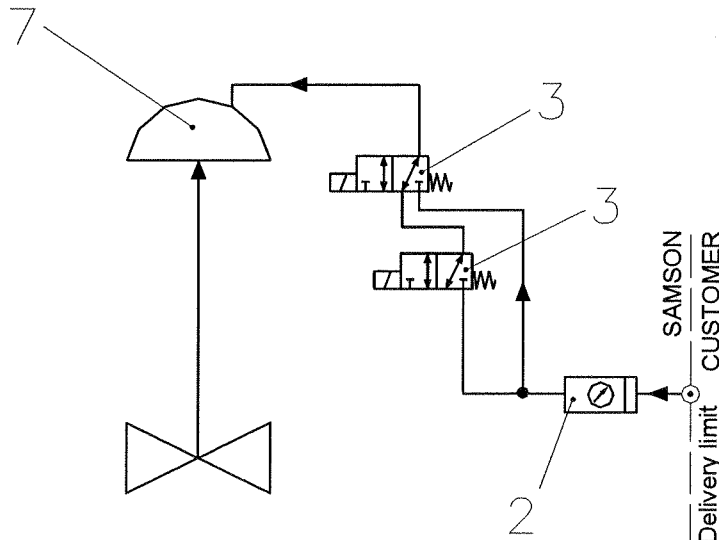
2004-09-01

Name:

V12/sro

Revision:

Pos.	Meßstelle
Pos.	Tag No.



Supply air connection 1/2 NPT

Pos	Stck.	Bezeichnung	Typ / Fabr.	pn. Anschl.	Sachnr.		
Pos	Qty.	Description	Type / Manuf.	pneu. Con.	Part No.		
1		Stellungsregler/ Positioner					
2		Zuluftstation/ Air set	B74G-4AK-AP3-RMN Norgren	1/4" NPT			
3		Magnetventil/ Solenoid valve	3963-1353 SAMSOMATIC	1/4" NPT			
4		Drossel/ Throttle valve					
5		Volumenverstärker/ Booster					
6		Schnellentlüfter/ Quick exhaust					
7		Antrieb/ Actuator	3277-120/ 700cm2 SAMSON	1/4" NPT			
8		Verblockrelais/ Lock up valve					
9		Sonstiges / Miscellaneous					
10							
11							
12		Pneu. Anschlußverschraubung / Pn. Connector					
13		Ausblaseschalldämpfer/ Vent Filter					
14		Filter/ Filter	<input type="checkbox"/> IP54 <input type="checkbox"/> IP65				
15							
Rohr/ Pipe	Größe/ Size		Dimensions	Material			
	1/2		{cm}    {inch}	St.St.			
Fitting	<input type="checkbox"/> ERMETO <input checked="" type="checkbox"/> SWAGELOK <input type="checkbox"/> PARKER <input type="checkbox"/> .....						
Stellzeit/ Stroking time	Bewegungsrichtung/ Direction		100 ... 0%	0....100%	ON/OFF mit Magnetventil (with Solenoidvalve)		
	Vorgabe/ requested [s]						
	Gemessen/ measured [s]						

Funktion / Function



# Verrohrungsplan / Hook up Plan\ No. 29

SAMSON No:

616 200

Project:

2nd ZAGROS Methanol Plant

Date:

2004-09-01

Name:

V12/sro

Revision:

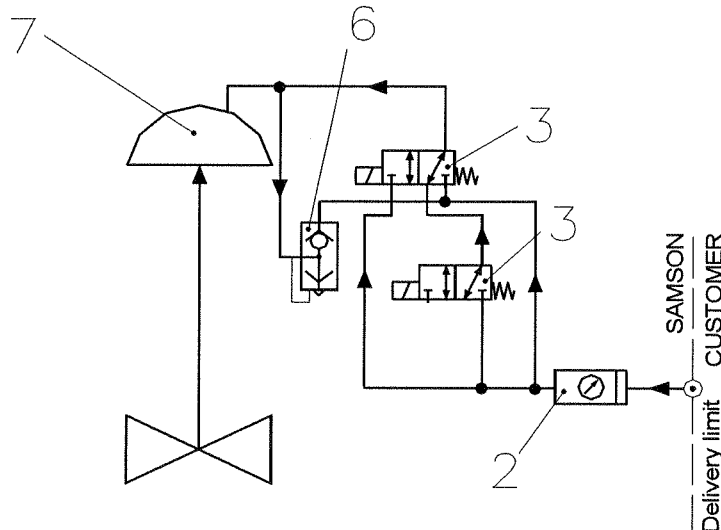
Pos.

Meßstelle

Pos.

Tag No.

UV101011



Supply air connection 1/2 NPT

Pos	Stck.	Bezeichnung	Typ / Fabr.	pn. Anschl.	Sachnr.
Pos	Qty.	Description	Type / Manuf.	pneu. Con.	Part No.
1		Stellungsregler/ Positioner			
2		Zuluftstation/ Air set	B74G-4AK-AP3-RMN Norgren	1¼" NPT	
3		Magnetventil/ Solenoid valve	3963-1353 SAMSOMATIC	1¼" NPT	
4		Drossel/ Throttle valve			
5		Volumenverstärker/ Booster			
6		Schnellentlüfter/ Quick exhaust	8502-0144	G 3¼"	
7		Antrieb/ Actuator	3277-700cm2 SAMSON	1¼" NPT	
8		Verblockrelais/ Lock up valve			
9		Sonstiges / Miscellaneous			
10					
11					
12		Pneu. Anschlußverschraubung / Pn. Connection			
13		Ausblaseschalldämpfer/ Vent Filter			
14		Filter/ Filter	<input type="checkbox"/> IP54 <input type="checkbox"/> IP65		
15					
Rohr/ Pipe	Größe/ Size		Dimensions	Material	
	1½		{cm}   [inch]	St.St.	
Fitting	<input type="checkbox"/> ERMETO <input checked="" type="checkbox"/> SWAGELOK <input type="checkbox"/> PARKER <input type="checkbox"/> .....				
Stellzeit/ Stroking time	Bewegungsrichtung/ Direction		100 ... 0%	0....100%	ON/OFF mit Magnetventil (with Solenoidvalve)
	Vorgabe/ requested [s]				
	Gemessen/ measured [s]				

Funktion / Function

Copying of this document, and giving it to others and the use or communication of the contents thereof, are forbidden without express authority by Lurgi. Offenders are liable to the payment of damages. All rights are reserved in the event of the grant of a patent or the registration of a utility model or design.

Index of Revisions

Rev.	Sheet	Prepared, revised		Checked	Approved			Remark, kind of revision
		Name	Date	Name	Name	Date	Status	
00	1 to 7	V12/sro	2004-09-01	V12/lf	V12/di	2004-09-10		First issue / FINAL ISSUE