




## Hook ups

V12/sro	2005-06-01	V12/lf	V12/di	2005-06-10	FI	FINAL ISSUE			
V12/sro	2004-09-01	V12/lf	V12/di	2004-09-10		FIRST ISSUE			
Name	Date	Name	Name	Date	Status				
Prepared, revised		Checked	Approved			Remark, kind of revision			
<div>Contractor:</div> <div> PETROCHEMICAL INDUSTRIES DESIGN &amp; ENGINEERING CO. شرکت طراحی و مهندسی صنایع پتروشیمی</div>						Owner Project No:	Contractor Order No:	Q.L.	DCC
						232000	1182-POR-IN-605	-	-
							Vendor Order Ref.		
						616 200			
	Project Name				Lurgi Doc. No.		Vendor Doc. No.	Sheet / of	Revision
	2nd ZAGROS METHANOL PLANT						SAM-151	1 / 22	01

# Verrohrungsplan / Hook up Plan\ No. 13

**Revison:**

**SAMSON No:**

616 200

**Project:**

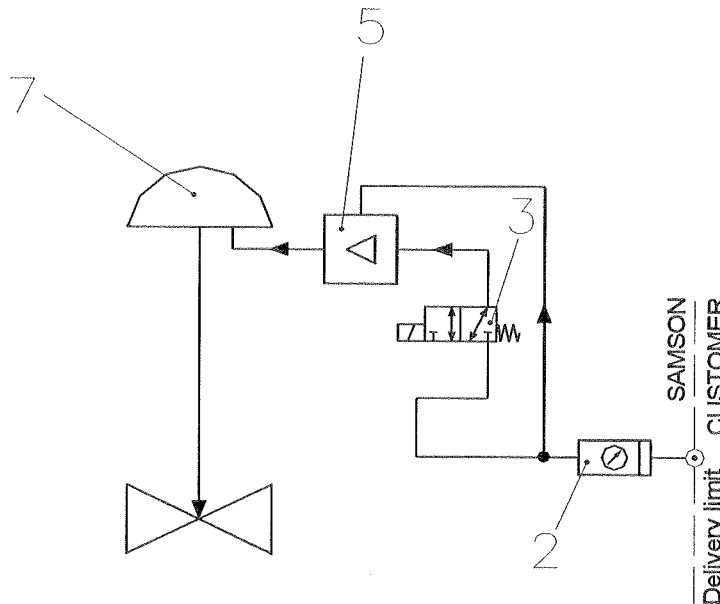
### 2nd ZAGROS Methanol Plant

Date:

2004-09-01

Name:

V12/sro



Supply air connection 1/2 NPT

Pos.	Meßstelle
Pos.	Tag No.
	UV101225
	UV101226
	UV750102

Pos	Stck.	Bezeichnung	Typ / Fabr.	pn. Anschl.	Sachnr.
Pos	Qty.	Description	Type / Manuf.	pneu. Con.	Part No.
1		Stellungsregler/ Positioner			
2	1	Zuluftstation/ Air set	B74G-6AK-AP3-RMN Norgren	3/4" NPT	
3	1	Magnetventil/ Solenoid valve	3963-1353 SAMSOMATIC	1/4" NPT	
4		Drossel/ Throttle valve			
5	1	Volumenverstärker/ Booster	8523-0084 SMC EIL100	G 3/8"	
6		Schnellentlüfter/ Quick exhaust			
7	1	Antrieb/ Actuator	3271-1400 cm2 SAMSON	1/4" NPT	
8		Verblockrelais/ Lock up valve			
9		Sonstiges / Miscellaneous			
10					
11					
12		Pneu. Anschlußverschraubung / Pn. Connector			
13		Ausblaseschalldämpfer/ Vent Filter			
14		Filter/ Filter	<input type="checkbox"/> IP54 <input type="checkbox"/> IP65		
15					

Rohr/ Pipe	Größe/ Size		Dimensions	Material
	1 1/2		{cm} {inch}	St.St.
Fitting	<input type="checkbox"/> ERMETO	<input checked="" type="checkbox"/> SWAGELOK	<input type="checkbox"/> PARKER	<input type="checkbox"/> .....

<b>Stellzeit/ Stroking time</b>	Bewegungsrichtung/ Direction	100 ... 0%	0....100%	ON/OFF mit Magnetventil (with Solenoidvalve)
	Vorgabe/ requested [s]			
	Gemessen/ measured [s]			

**Funktion / Function**



**Verrohrungsplan / Hook up  
Plan\ No. 16**

**Revison:**

**SAMSON No:**

616 200

**Project:**

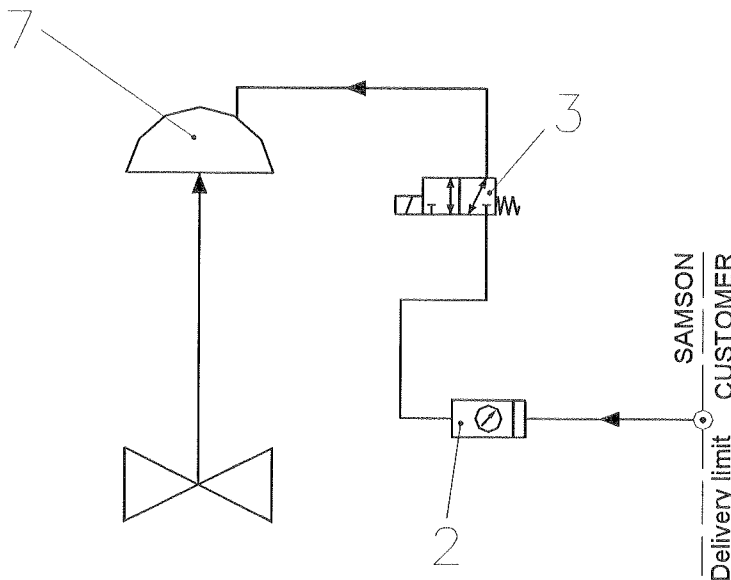
### 2nd ZAGROS Methanol Plant

Date:

2004-09-01

Name:

V12/sro



Supply air connection 1/2 NPT

Pos	Stck.	Bezeichnung	Typ / Fabr.	pn. Anschl.	Sachnr.		
Pos	Qty.	Description	Type / Manuf.	pneu. Con.	Part No.		
1		Stellungsregler/ Positioner					
2	1	Zuluftstation/ Air set	B74G-4AK-AP3-RMN Norgren	1¼" NPT			
3	1	Magnetventil/ Solenoid valve	3963-1353 SAMSOMATIC	1¼" NPT			
4		Drossel/ Throttle valve					
5		Volumenverstärker/ Booster					
6		Schnellentlüfter/ Quick exhaust					
7	1	Antrieb/ Actuator	3277-120/ 350cm2 SAMSON	1¼" NPT			
8		Verblockrelais/ Lock up valve					
9		Sonstiges / Miscellaneous					
10							
11							
12		Pneu. Anschlußverschraubung / Pn. Connector					
13		Ausblaseschalldämpfer/ Vent Filter					
14		Filter/ Filter	<input type="checkbox"/> IP54 <input type="checkbox"/> IP65				
15							
Rohr/ Pipe	Größe/ Size		Dimensions	Material			
	1½		{cm} [inch]	St.St.			
Fitting	<input type="checkbox"/> ERMETO <input checked="" type="checkbox"/> SWAGELOK <input type="checkbox"/> PARKER <input type="checkbox"/> .....						
Stellzeit/ Stroking time	Bewegungsrichtung/ Direction		100 ... 0%	0....100%	ON/OFF mit Magnetventil (with Solenoidvalve)		
	Vorgabe/ requested [s]						
	Gemessen/ measured [s]						

**Funktion / Function**



# Verrohrungsplan / Hook up Plan\ No. 28

Revision:

SAMSON No:

616 200

Project:

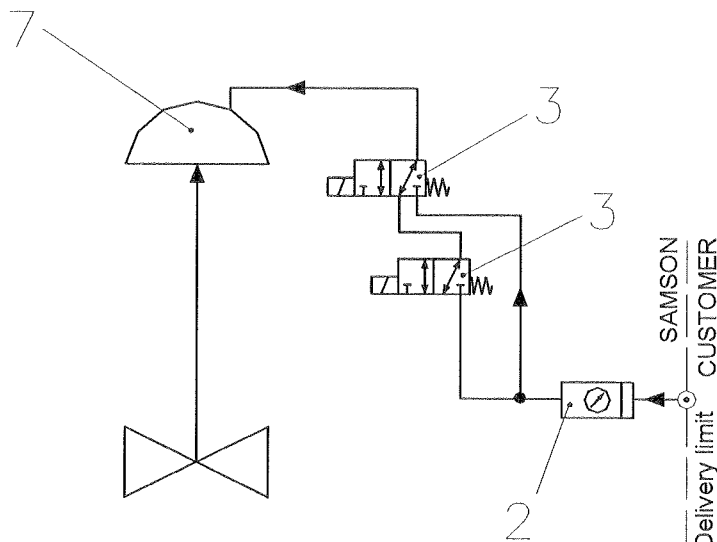
2nd ZAGROS Methanol Plant

Date:

2004-09-01

Name:

V12/sro



Supply air connection 1/2 NPT

Pos.	Meßstelle
Pos.	Tag No.

	UV100503
	UV101012
	UV101015
	UV101032
	UV101035

Pos	Stck.	Bezeichnung	Typ / Fabr.	pn. Anschl.	Sachnr.
Pos	Qty.	Description	Type / Manuf.	pneu. Con.	Part No.
1		Stellungsregler/ Positioner			
2	1	Zuluftstation/ Air set	B74G-4AK-AP3-RMN Norgren	1¼" NPT	
3	2	Magnetventil/ Solenoid valve	3963-1353 SAMSOMATIC	1¼" NPT	
4		Drossel/ Throttle valve			
5		Volumenverstärker/ Booster			
6		Schnellentlüfter/ Quick exhaust			
7	1	Antrieb/ Actuator	3277-120/ 700cm2 SAMSON	1¼" NPT	
8		Verblockrelais/ Lock up valve			
9		Sonstiges / Miscellaneous			
10					
11					
12		Pneu. Anschlußverschraubung / Pn. Connection			
13		Ausblaseschalldämpfer/ Vent Filter			
14		Filter/ Filter	<input type="checkbox"/> IP54 <input type="checkbox"/> IP65		
15					
Rohr/ Pipe		Größe/ Size	Dimensions	Material	
		1½	{cm}    [inch]	St.St.	
Fitting		<input type="checkbox"/> ERMETO <input checked="" type="checkbox"/> SWAGELOK <input type="checkbox"/> PARKER <input type="checkbox"/> .....			
Stellzeit/ Stroking time		Bewegungsrichtung/ Direction	100 ... 0%	0....100%	ON/OFF mit Magnetventil (with Solenoidvalve)
		Vorgabe/ requested [s]			
		Gemessen/ measured [s]			

Funktion / Function



# Verrohrungsplan / Hook up Plan\ No. 29

SAMSON No:

616 200

Project:

2nd ZAGROS Methanol Plant

Date:

2004-09-01

Name:

V12/sro

Revision:

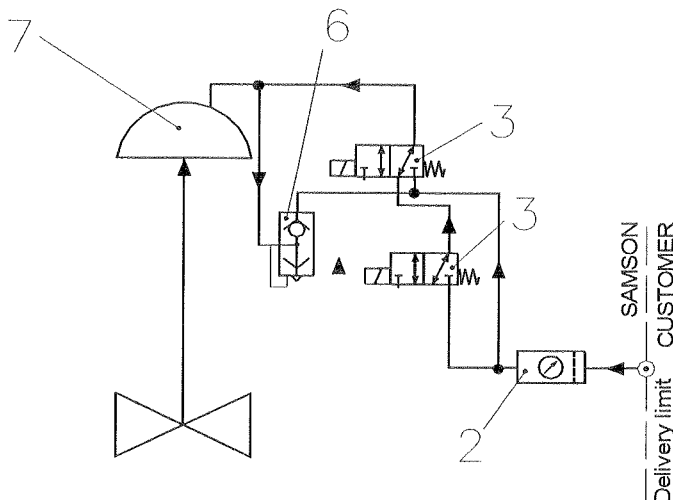
Pos.

Meßstelle

Pos.

Tag No.

UV101011



Supply air connection 1/2 NPT

Pos	Stck.	Bezeichnung	Typ / Fabr.	pn. Anschl.	Sachnr.
Pos	Qty.	Description	Type / Manuf.	pneu. Con.	Part No.
1		Stellungsregler/ Positioner			
2	1	Zuluftstation/ Air set	B74G-4AK-AP3-RMN Norgren	1¼" NPT	
3	2	Magnetventil/ Solenoid valve	3963-1353 SAMSOMATIC	1¼" NPT	
4		Drossel/ Throttle valve			
5		Volumenverstärker/ Booster			
6	1	Schnellentlüfter/ Quick exhaust	4050414 Herion	G ¾"	8502-0144
7	1	Antrieb/ Actuator	3277-700cm2 SAMSON	1¼" NPT	
8		Verblockrelais/ Lock up valve			
9		Sonstiges / Miscellaneous			
10					
11					
12		Pneu. Anschlußverschraubung / Pn. Connection			
13		Ausblaseschalldämpfer/ Vent Filter			
14		Filter/ Filter	<input type="checkbox"/> IP54 <input type="checkbox"/> IP65		
15					
Rohr/ Pipe		Größe/ Size	Dimensions	Material	
		1/2	{cm} [inch]	St.St.	
Fitting		<input type="checkbox"/> ERMETO <input checked="" type="checkbox"/> SWAGELOK <input type="checkbox"/> PARKER <input type="checkbox"/> .....			
Stellzeit/ Stroking time		Bewegungsrichtung/ Direction	100 ... 0%	0....100%	ON/OFF mit Magnetventil (with Solenoidvalve)
		Vorgabe/ requested [s]			
		Gemessen/ measured [s]			

Funktion / Function



# Verrohrungsplan / Hook up Plan\ No. SRP3000

Revision:

SAMSON No:

616 200

Project:

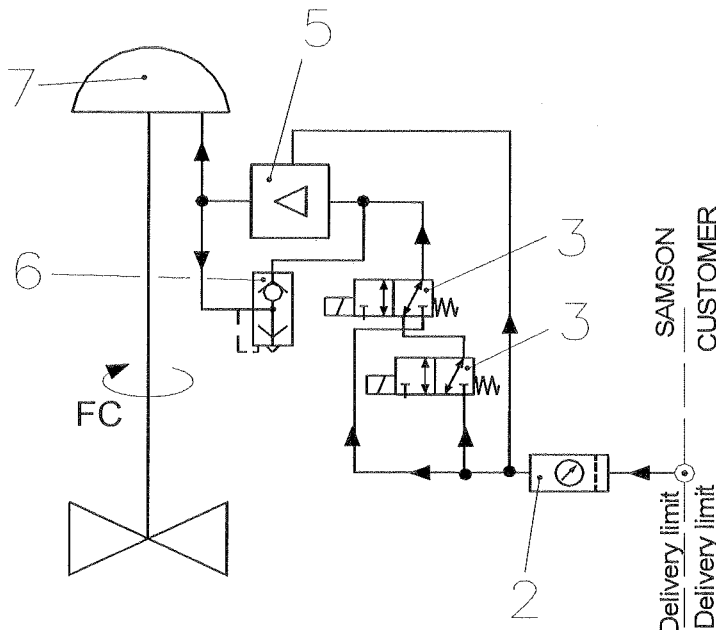
2nd ZAGROS Methanol Plant

Date:

2005-06-01

Name:

V12/sro



Supply air connection 1/2 NPT

Pos. Meßstelle  
Pos. Tag No.

UV100101

Pos	Stck.	Bezeichnung	Typ / Fabr.	pn. Anschl.	Sachnr.
Pos	Qty.	Description	Type / Manuf.	pneu. Con.	Part No.
1		Stellungsregler/ Positioner			
2	1	Zuluftstation/ Air set	B74G-6AK-AP3-RMN Norgren	3/4" NPT	
3	2	Magnetventil/ Solenoid valve	3963-1352 SAMSOMATIC	1/4" NPT	
4		Drossel/ Throttle valve			
5	1	Volumenverstärker/ Booster	4500A Fairchild	3/4" NPT	8523-0046
6	1	Schnellentlüfter/ Quick exhaust	4050414 Herion	G 3/4"	8502-0144
7	1	Antrieb/ Actuator	SRP3000 AT	G 1/2"	
8		Verblockrelais/ Lock up valve			
9		Sonstiges / Miscellaneous			
10					
11					
12		Pneu. Anschlußverschraubung / Pn. Connector			
13		Ausblaseschalldämpfer/ Vent Filter			
14		Filter/ Filter	<input type="checkbox"/> IP54 <input type="checkbox"/> IP65		
15					
Rohr/ Pipe		Größe/ Size	Dimensions	Material	
		1/2	{cm}    {inch}	St.St.	
Fitting	<input type="checkbox"/> ERMETO <input checked="" type="checkbox"/> SWAGELOK <input type="checkbox"/> PARKER <input type="checkbox"/> .....				
Stellzeit/ Stroking time	Bewegungsrichtung/ Direction		100 ... 0%	0....100%	ON/OFF mit Magnetventil (with Solenoidvalve)
	Vorgabe/ requested [s]				
	Gemessen/ measured [s]				

Funktion / Function



# Verrohrungsplan / Hook up Plan\ No. GP100S

Revision:

SAMSON No:

616 200

Project:

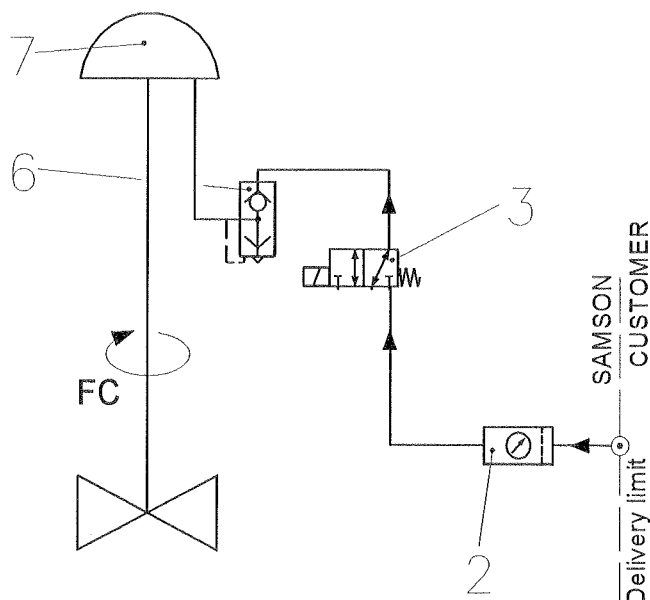
2nd ZAGROS Methanol Plant

Date:

2005-06-01

Name:

V12/sro



Supply air connection 1/2 NPT

Pos.	Meßstelle
Pos.	Tag No.
	UV100417

Pos	Stck.	Bezeichnung	Typ / Fabr.	pn. Anschl.	Sachnr.
Pos	Qty.	Description	Type / Manuf.	pneu. Con.	Part No.
1		Stellungsregler/ Positioner			
2	1	Zuluftstation/ Air set	B74G-6AK-AP3-RMN Norgren	3/4" NPT	
3	1	Magnetventil/ Solenoid valve	3963-1352 SAMSOMATIC	1/4" NPT	
4		Drossel/ Throttle valve			
5		Volumenverstärker/ Booster			
6	1	Schnellentlüfter/ Quick exhaust	Type Ross	G 3/4"	
7	1	Antrieb/ Actuator	GP100S-535/C1 Rotork	3/4" NPT	
8		Verblockrelais/ Lock up valve			
9		Sonstiges / Miscellaneous			
10					
11					
12		Pneu. Anschlußverschraubung / Pn. Connection			
13		Ausblaseschalldämpfer/ Vent Filter			
14		Filter/ Filter	<input type="checkbox"/> IP54 <input type="checkbox"/> IP65		
15					
Rohr/ Pipe		Größe/ Size	Dimensions	Material	
		1/2	{cm}    {inch}	St.St.	
Fitting		<input type="checkbox"/> ERMETO <input checked="" type="checkbox"/> SWAGELOK <input type="checkbox"/> PARKER <input type="checkbox"/> .....			
Stellzeit/ Stroking time		Bewegungsrichtung/ Direction	100 ... 0%	0....100%	ON/OFF mit Magnetventil (with Solenoidvalve)
		Vorgabe/ requested [s]			
		Gemessen/ measured [s]			

Funktion / Function



**Verrohrungsplan / Hook up  
Plan\ No. SRP3000 (01-01)**

### Revision:

**SAMSON No:**

616 200

**Project:**

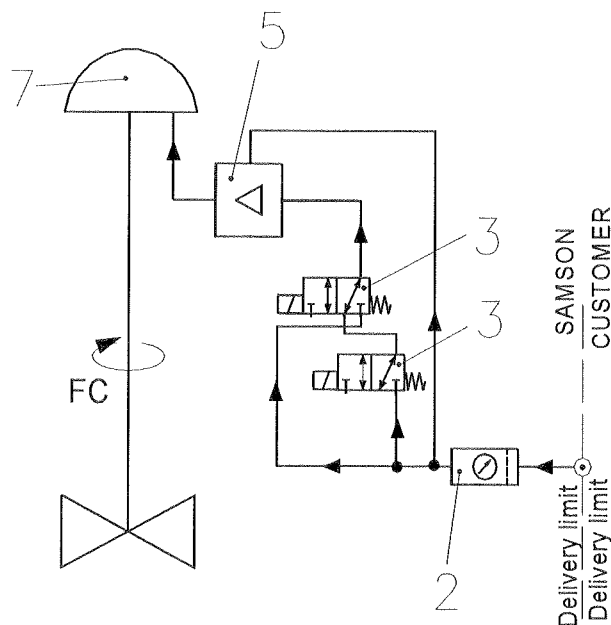
## 2nd ZAGROS Methanol Plant

Date:

2005-06-01

**Name:**

V12/sro



Supply air connection 1/2 NPT

Pos	Stck.	Bezeichnung	Typ / Fabr.	pn. Anschl.	Sachnr.		
Pos	Qty.	Description	Type / Manuf.	pneu. Con.	Part No.		
1		Stellungsregler/ Positioner					
2	1	Zuluftstation/ Air set	B74G-6AK-AP3-RMN Norgren	3/4" NPT			
3	2	Magnetventil/ Solenoid valve	3963-1352 SAMSOMATIC	1/4" NPT			
4		Drossel/ Throttle valve					
5	1	Volumenverstärker/ Booster	4500A Fairchild	3/4" NPT	8523-0046		
6		Schnellentlüfter/ Quick exhaust					
7	1	Antrieb/ Actuator	SRP3000 AT	G 1/2"			
8		Verblockrelais/ Lock up valve					
9		Sonstiges / Miscellaneous					
10							
11							
12		Pneu. Anschlußverschraubung / Pn. Connector					
13		Ausblaseschalldämpfer/ Vent Filter					
14		Filter/ Filter	<input type="checkbox"/> IP54 <input type="checkbox"/> IP65				
15							
Rohr/ Pipe	Größe/ Size		Dimensions	Material			
	1/2		<input type="checkbox"/> cm <input type="checkbox"/> inch	St.St.			
Fitting	<input type="checkbox"/> ERMETO	<input checked="" type="checkbox"/> SWAGELOK	<input type="checkbox"/> PARKER	<input type="checkbox"/> .....			
Stellzeit/ Stroking time	Bewegungsrichtung/ Direction		100 ... 0%	0....100%	ON/OFF mit Magnetventil (with Solenoidvalve)		
	Vorgabe/ requested [s]						
	Gemessen/ measured [s]						

**Funktion / Function**



# Verrohrungsplan / Hook up Plan\ No. 30

SAMSON No:	616 200
Project:	2nd ZAGROS Methanol Plant
Date:	2005-06-01
Name:	V12/sro

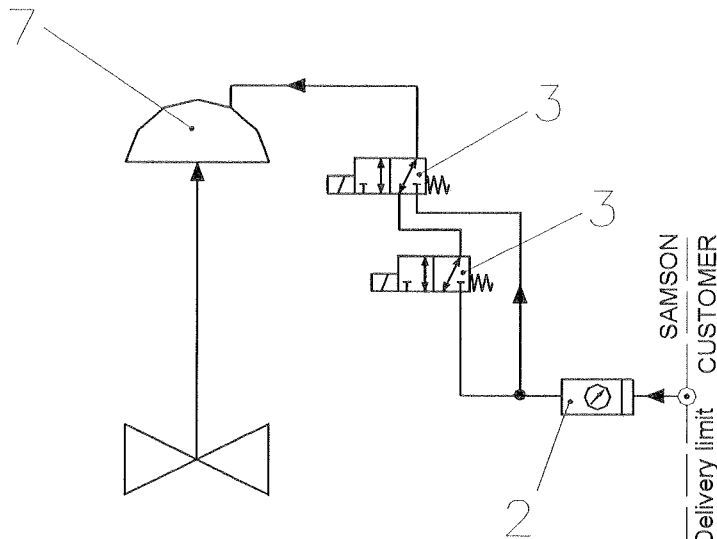
Revision:

Name:

Pos. Meßstelle

Pos. Tag No.

UV101031



Supply air connection 1/2 NPT

Pos	Stck.	Bezeichnung	Typ / Fabr.	pn. Anschl.	Sachnr.		
Pos	Qty.	Description	Type / Manuf.	pneu. Con.	Part No.		
1		Stellungsregler/ Positioner					
2	1	Zuluftstation/ Air set	B74G-4AK-AP3-RMN Norgren	1¼" NPT			
3	1	Magnetventil/ Solenoid valve	3963-1353 SAMSOMATIC	1¼" NPT			
4		Drossel/ Throttle valve					
5		Volumenverstärker/ Booster					
6		Schnellentlüfter/ Quick exhaust					
7	1	Antrieb/ Actuator	3277/ 700cm2 SAMSON	1¼" NPT			
8		Verblockrelais/ Lock up valve					
9		Sonstiges / Miscellaneous					
10							
11							
12		Pneu. Anschlußverschraubung / Pn. Connection					
13		Ausblaseschalldämpfer/ Vent Filter					
14		Filter/ Filter	<input type="checkbox"/> IP54 <input type="checkbox"/> IP65				
15							
Rohr/ Pipe		Größe/ Size	Dimensions	Material			
		1½	{cm}   {inch}	St.St.			
Fitting		<input type="checkbox"/> ERMETO <input checked="" type="checkbox"/> SWAGELOK <input type="checkbox"/> PARKER <input type="checkbox"/> .....					
Stellzeit/ Stroking time		Bewegungsrichtung/ Direction	100 ... 0%	0....100%	ON/OFF mit Magnetventil (with Solenoidvalve)		
		Vorgabe/ requested [s]					
		Gemessen/ measured [s]					

Funktion / Function

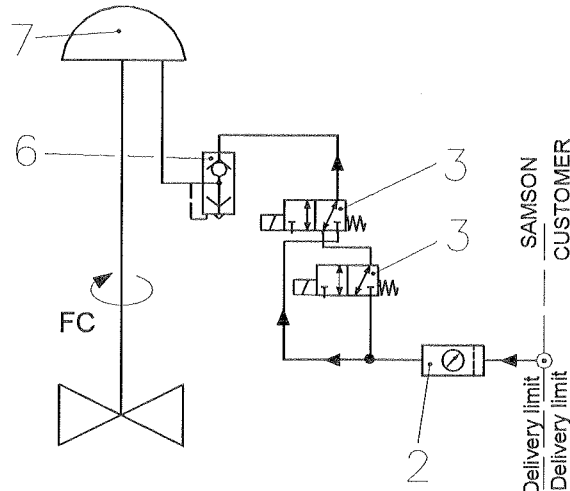


# Verrohrungsplan / Hook up Plan\ No. GP100S

SAMSON No:	616 200
Project:	2nd ZAGROS Methanol Plant
Date:	2005-06-01
Name:	V12/sro

Revision:

Pos.	Meßstelle
Pos.	Tag No.



Supply air connection 1/2 NPT

UV101010
UV101013
UV101014
UV101030
UV101033
UV101034

Pos	Stck.	Bezeichnung	Typ / Fabr.	pn. Anschl.	Sachnr.
Pos	Qty.	Description	Type / Manuf.	pneu. Con.	Part No.
1		Stellungsregler/ Positioner			
2	1	Zuluftstation/ Air set	B74G-6AK-AP3-RMN Norgren	3/4" NPT	
3	2	Magnetventil/ Solenoid valve	3963-1352 SAMSOMATIC	1/4" NPT	
4		Drossel/ Throttle valve			
5	1	Volumenverstärker/ Booster			
6	1	Schnellentlüfter/ Quick exhaust	Type Ross	G 3/4"	
7	1	Antrieb/ Actuator	GP-100S-485/C1	3/4" NPT	
8		Verblockrelais/ Lock up valve			
9		Sonstiges / Miscellaneous			
10					
11					
12		Pneu. Anschlußverschraubung / Pn. Connection			
13		Ausblaseschalldämpfer/ Vent Filter			
14		Filter/ Filter	<input type="checkbox"/> IP54 <input type="checkbox"/> IP65		
15					
Rohr/ Pipe	Größe/ Size		Dimensions	Material	
	1/2		{cm}   {inch}	St.St.	
Fitting	<input type="checkbox"/> ERMETO <input checked="" type="checkbox"/> SWAGELOK <input type="checkbox"/> PARKER <input type="checkbox"/> .....				
Stellzeit/ Stroking time	Bewegungsrichtung/ Direction		100 ... 0%	0....100%	ON/OFF mit Magnetventil (with Solenoidvalve)
	Vorgabe/ requested [s]				
	Gemessen/ measured [s]				

Funktion / Function

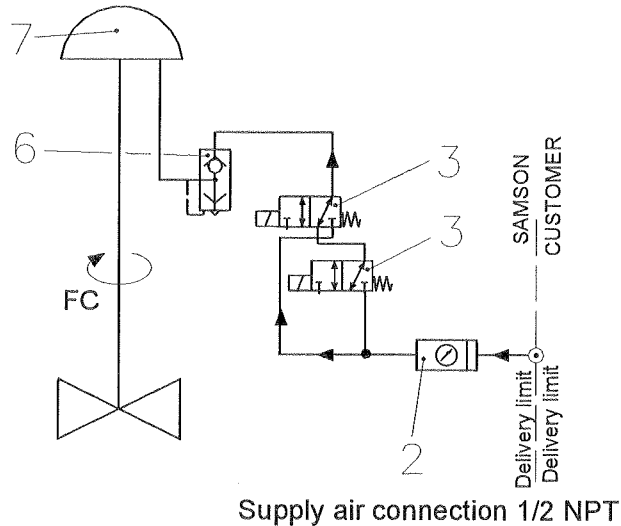


# Verrohrungsplan / Hook up Plan\ No. GP085

SAMSON No:	616 200
Project:	2nd ZAGROS Methanol Plant
Date:	2005-06-01
Name:	V12/sro

Revision:

Pos.	Meßstelle
Pos.	Tag No.
	PV100110



Pos	Stck.	Bezeichnung	Typ / Fabr.	pn. Anschl.	Sachnr.
Pos	Qty.	Description	Type / Manuf.	pneu. Con.	Part No.
1		Stellungsregler/ Positioner			
2	1	Zuluftstation/ Air set	B74G-6AK-AP3-RMN Norgren	3/4" NPT	
3	2	Magnetventil/ Solenoid valve	3963-1352 SAMSOMATIC	1/4" NPT	
4		Drossel/ Throttle valve			
5	1	Volumenverstärker/ Booster			
6	1	Schnellentlüfter/ Quick exhaust	Type Ross	G 3/4"	
7	1	Antrieb/ Actuator	GP-085-385/C3	3/4" NPT	
8		Verblockrelais/ Lock up valve			
9		Sonstiges / Miscellaneous			
10					
11					
12		Pneu. Anschlußverschraubung / Pn. Connection			
13		Ausblaseschalldämpfer/ Vent Filter			
14		Filter/ Filter	<input type="checkbox"/> IP54 <input type="checkbox"/> IP65		
15					
Rohr/ Pipe	Größe/ Size		Dimensions	Material	
	1/2		{cm}   [inch]	St.St.	
Fitting	<input type="checkbox"/> ERMETO <input checked="" type="checkbox"/> SWAGELOK <input type="checkbox"/> PARKER <input type="checkbox"/> .....				
Stellzeit/ Stroking time	Bewegungsrichtung/ Direction		100 ... 0%	0.... 100%	ON/OFF mit Magnetventil (with Solenoidvalve)
	Vorgabe/ requested [s]				
	Gemessen/ measured [s]				

Funktion / Function



# Verrohrungsplan / Hook up Plan\ No. 31

SAMSON No:

616 200

Project:

2nd ZAGROS Methanol Plant

Date:

2005-06-01

Name:

V12/sro

Revision:

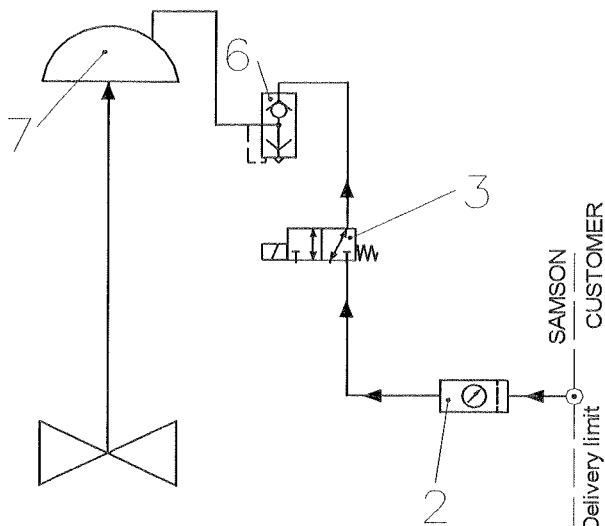
Pos.

Meßstelle

Pos.

Tag No.

LV150101B



Supply air connection 1/2 NPT

Pos	Stck.	Bezeichnung	Typ / Fabr.	pn. Anschl.	Sachnr.		
Pos	Qty.	Description	Type / Manuf.	pneu. Con.	Part No.		
1		Stellungsregler/ Positioner					
2	1	Zuluftstation/ Air set	B74G-6AK-AP3-RMN Norgren	1¼" NPT			
3	1	Magnetventil/ Solenoid valve	3963-1353 SAMSOMATIC	1¼" NPT			
4		Drossel/ Throttle valve					
5		Volumenverstärker/ Booster					
6	1	Schnellentlüfter/ Quick exhaust	4050414 Herion	G ¾"	8502-0144		
7	1	Antrieb/ Actuator	3277-700 cm2 SAMSON	1¼" NPT			
8		Verblockrelais/ Lock up valve					
9		Sonstiges / Miscellaneous					
10							
11							
12		Pneu. Anschlußverschraubung / Pn. Connector					
13		Ausblaseschalldämpfer/ Vent Filter					
14		Filter/ Filter	<input type="checkbox"/> IP54 <input type="checkbox"/> IP65				
15							
Rohr/ Pipe		Größe/ Size	Dimensions	Material			
		1½	{cm}    {inch}	St.St.			
Fitting		<input type="checkbox"/> ERMETO <input checked="" type="checkbox"/> SWAGELOK <input type="checkbox"/> PARKER <input type="checkbox"/> .....					
Stellzeit/ Stroking time		Bewegungsrichtung/ Direction	100 ... 0%	0....100%	ON/OFF mit Magnetventil (with Solenoidvalve)		
		Vorgabe/ requested [s]					
		Gemessen/ measured [s]					

Funktion / Function



# Verrohrungsplan / Hook up Plan\ No. GP160S

Revision:

SAMSON No:

616 200

Project:

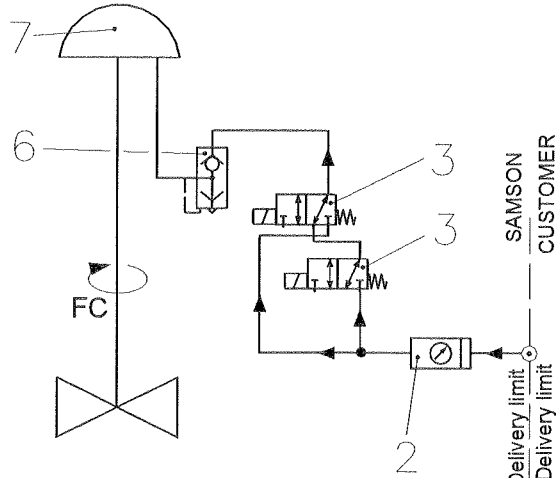
2nd ZAGROS Methanol Plant

Date:

2005-06-01

Name:

V12/sro



Supply air connection 1/2 NPT

Pos.	Meßstelle
Pos.	Tag No.

UV200203

Pos	Stck.	Bezeichnung	Typ / Fabr.	pn. Anschl.	Sachnr.
Pos	Qty.	Description	Type / Manuf.	pneu. Con.	Part No.
1		Stellungsregler/ Positioner			
2	1	Zuluftstation/ Air set	B74G-6AK-AP3-RMN Norgren	3/4" NPT	
3	2	Magnetventil/ Solenoid valve	3963-1352 SAMSOMATIC	1/4" NPT	
4		Drossel/ Throttle valve			
5	1	Volumenverstärker/ Booster			
6	1	Schnellentlüfter/ Quick exhaust	Type Ross	G 3/4"	
7	1	Antrieb/ Actuator	GP-160S-635/c2	1" NPT	
8		Verblockrelais/ Lock up valve			
9		Sonstiges / Miscellaneous			
10					
11					
12		Pneu. Anschlußverschraubung / Pn. Connector			
13		Ausblaseschalldämpfer/ Vent Filter			
14		Filter/ Filter	<input type="checkbox"/> IP54 <input type="checkbox"/> IP65		
15					
Rohr/ Pipe	Größe/ Size		Dimensions	Material	
	1/2		{cm}   {inch}	St.St.	
Fitting	<input type="checkbox"/> ERMETO <input checked="" type="checkbox"/> SWAGELOK <input type="checkbox"/> PARKER <input type="checkbox"/> .....				
Stellzeit/ Stroking time	Bewegungsrichtung/ Direction		100 ... 0%	0....100%	ON/OFF mit Magnetventil (with Solenoidvalve)
	Vorgabe/ requested [s]				
	Gemessen/ measured [s]				

Funktion / Function



# Verrohrungsplan / Hook up Plan\ No. GP160S

Revision:

SAMSON No:

616 200

Project:

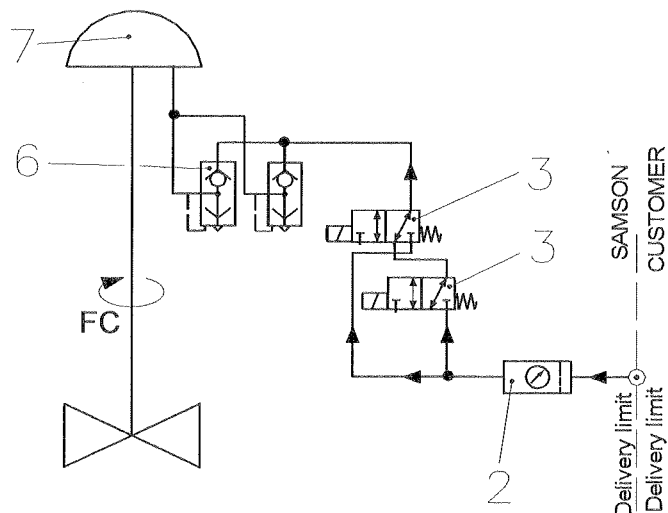
2nd ZAGROS Methanol Plant

Date:

2005-06-01

Name:

V12/sro



Supply air connection 1/2 NPT

Pos. Meßstelle  
Pos. Tag No.

UV200302

Pos	Stck.	Bezeichnung	Typ / Fabr.	pn. Anschl.	Sachnr.		
Pos	Qty.	Description	Type / Manuf.	pneu. Con.	Part No.		
1		Stellungsregler/ Positioner					
2	1	Zuluftstation/ Air set	B74G-6AK-AP3-RMN Norgren	3/4" NPT			
3	2	Magnetventil/ Solenoid valve	3963-1352 SAMSOMATIC	1/4" NPT			
4		Drossel/ Throttle valve					
5	1	Volumenverstärker/ Booster					
6	2	Schnellentlüfter/ Quick exhaust	Type Ross	G 3/4"			
7	1	Antrieb/ Actuator	GP-160S-635/C2	1" NPT			
8		Verblockrelais/ Lock up valve					
9		Sonstiges / Miscellaneous					
10							
11							
12		Pneu. Anschlußverschraubung / Pn. Connection					
13		Ausblaseschalldämpfer/ Vent Filter					
14		Filter/ Filter	<input type="checkbox"/> IP54 <input type="checkbox"/> IP65				
15							
Rohr/ Pipe	Größe/ Size		Dimensions	Material			
	1/2		{cm}    {inch}	St.St.			
Fitting	<input type="checkbox"/> ERMETO <input checked="" type="checkbox"/> SWAGELOK <input type="checkbox"/> PARKER <input type="checkbox"/> .....						
Stellzeit/ Stroking time	Bewegungsrichtung/ Direction		100 ... 0%	0....100%	ON/OFF mit Magnetventil (with Solenoidvalve)		
	Vorgabe/ requested [s]						
	Gemessen/ measured [s]						

Funktion / Function



# Verrohrungsplan / Hook up Plan\ No. GP160S

Revision:

SAMSON No:

616 200

Project:

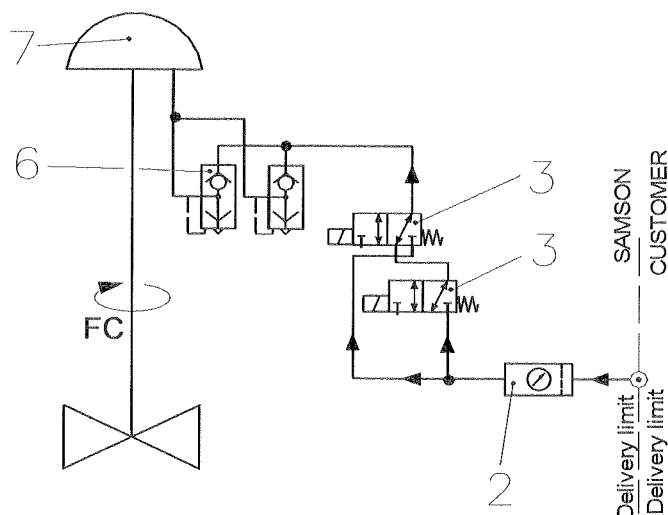
2nd ZAGROS Methanol Plant

Date:

2005-06-01

Name:

V12/sro



Supply air connection 1/2 NPT

Pos.	Meßstelle
Pos.	Tag No.
	UV200301

Pos	Stck.	Bezeichnung	Typ / Fabr.	pn. Anschl.	Sachnr.		
Pos	Qty.	Description	Type / Manuf.	pneu. Con.	Part No.		
1		Stellungsregler/ Positioner					
2	1	Zuluftstation/ Air set	B74G-6AK-AP3-RMN Norgren	3/4" NPT			
3	2	Magnetventil/ Solenoid valve	3963-1352 SAMSOMATIC	1/4" NPT			
4		Drossel/ Throttle valve					
5	1	Volumenverstärker/ Booster					
6	2	Schnellentlüfter/ Quick exhaust	Type Ross	G 3/4"			
7	1	Antrieb/ Actuator	GP-160S-685/C3	1" NPT			
8		Verblockrelais/ Lock up valve					
9		Sonstiges / Miscellaneous					
10							
11							
12		Pneu. Anschlußverschraubung / Pn. Connection					
13		Ausblaseschalldämpfer/ Vent Filter					
14		Filter/ Filter	<input type="checkbox"/> IP54 <input type="checkbox"/> IP65				
15							
Rohr/ Pipe		Größe/ Size	Dimensions	Material			
		1/2	{cm}   [inch]	St.St.			
Fitting	<input type="checkbox"/> ERMETO <input checked="" type="checkbox"/> SWAGELOK <input type="checkbox"/> PARKER <input type="checkbox"/> .....						
Stellzeit/ Stroking time	Bewegungsrichtung/ Direction		100 ... 0%	0....100%	ON/OFF mit Magnetventil (with Solenoidvalve)		
	Vorgabe/ requested [s]						
	Gemessen/ measured [s]						

Funktion / Function





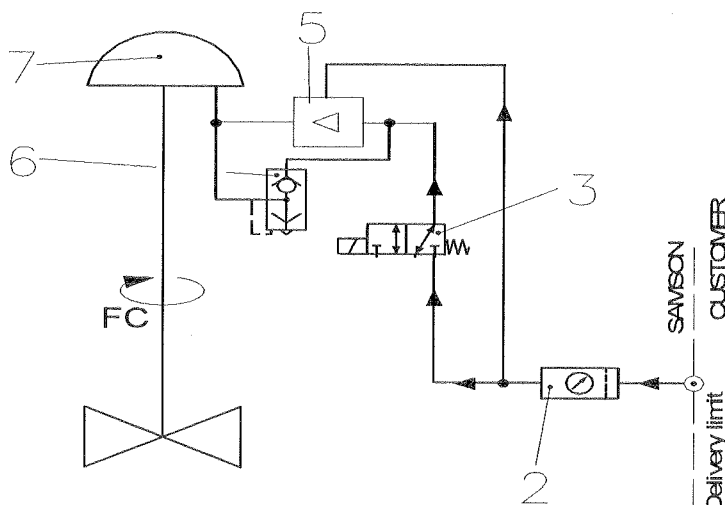
# Verrohrungsplan / Hook up Plan\ No. SRP5000

SAMSON No:	616 200
Project:	2nd ZAGROS Methanol Plant
Date:	2005-06-01
Name:	V12/sro

Revision:

Pos.	Meßstelle
Pos.	Tag No.

UV400101



Supply air connection 1/2 NPT

Pos	Stck.	Bezeichnung	Typ / Fabr.	pn. Anschl.	Sachnr.		
Pos	Qty.	Description	Type / Manuf.	pneu. Con.	Part No.		
1		Stellungsregler/ Positioner					
2	1	Zuluftstation/ Air set	B74G-6AK-AP3-RMN Norgren	3/4" NPT			
3	1	Magnetventil/ Solenoid valve	3963-1352 SAMSOMATIC	1/4" NPT			
4		Drossel/ Throttle valve					
5	1	Volumenverstärker/ Booster	4500A Fairchild	3/4" NPT	8523-0046		
6	1	Schnellentlüfter/ Quick exhaust	4050414 Herion	G 3/4"	8502-0144		
7	1	Antrieb/ Actuator	SRP 5000 AT	G 1/2"			
8		Verblockrelais/ Lock up valve					
9		Sonstiges / Miscellaneous					
10							
11							
12		Pneu. Anschlußverschraubung / Pn. Connection					
13		Ausblaseschalldämpfer/ Vent Filter					
14		Filter/ Filter	<input type="checkbox"/> IP54 <input type="checkbox"/> IP65				
15							
Rohr/ Pipe	Größe/ Size		Dimensions	Material			
	1/2		{cm}   {inch}	St.St.			
Fitting	<input type="checkbox"/> ERMETO <input checked="" type="checkbox"/> SWAGELOK <input type="checkbox"/> PARKER <input type="checkbox"/> .....						
Stellzeit/ Stroking time	Bewegungsrichtung/ Direction		100 ... 0%	0....100%	ON/OFF mit Magnetventil (with Solenoidvalve)		
	Vorgabe/ requested [s]						
	Gemessen/ measured [s]						

Funktion / Function



# Verrohrungsplan / Hook up Plan\ No. SRP2000

Revision:

SAMSON No:

616 200

Project:

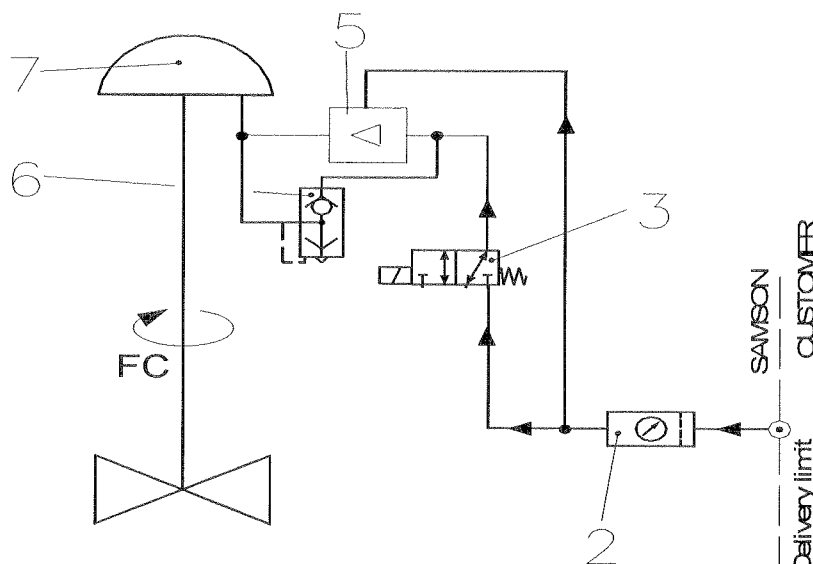
2nd ZAGROS Methanol Plant

Date:

2005-06-01

Name:

V12/sro



Supply air connection 1/2 NPT

Pos.	Meßstelle
Pos.	Tag No.
	UV400201A
	UV400201B

Pos	Stck.	Bezeichnung	Typ / Fabr.	pn. Anschl.	Sachnr.			
Pos	Qty.	Description	Type / Manuf.	pneu. Con.	Part No.			
1		Stellungsregler/ Positioner						
2	1	Zuluftstation/ Air set	B74G-6AK-AP3-RMN Norgren	3/4" NPT				
3	1	Magnetventil/ Solenoid valve	3963-1352 SAMSOMATIC	1/4" NPT				
4		Drossel/ Throttle valve						
5	1	Volumenverstärker/ Booster	EIL-100-F03 SMC	G 3/8"	8523-0084			
6	1	Schnellentlüfter/ Quick exhaust	4050414 Herion	G 3/4"	8502-0144			
7	1	Antrieb/ Actuator	SRP 2000 AT	G3/8"				
8		Verblockrelais/ Lock up valve						
9		Sonstiges / Miscellaneous						
10								
11								
12		Pneu. Anschlußverschraubung / Pn. Connection						
13		Ausblaseschalldämpfer/ Vent Filter						
14		Filter/ Filter	<input type="checkbox"/> IP54 <input type="checkbox"/> IP65					
15								
Rohr/ Pipe		Größe/ Size	Dimensions	Material				
		1/2	{cm}    {inch}	St.St.				
Fitting		<input type="checkbox"/> ERMETO <input checked="" type="checkbox"/> SWAGELOK <input type="checkbox"/> PARKER <input type="checkbox"/> .....						
Stellzeit/ Stroking time		Bewegungsrichtung/ Direction	100 ... 0%	0....100%	ON/OFF mit Magnetventil (with Solenoidvalve)			
		Vorgabe/ requested [s]						
		Gemessen/ measured [s]						

Funktion / Function

**Verrohrungsplan / Hook up  
Plan\ No. GP-130-585A**

**Revison:**

**SAMSON No:**

616 200

**Project:**

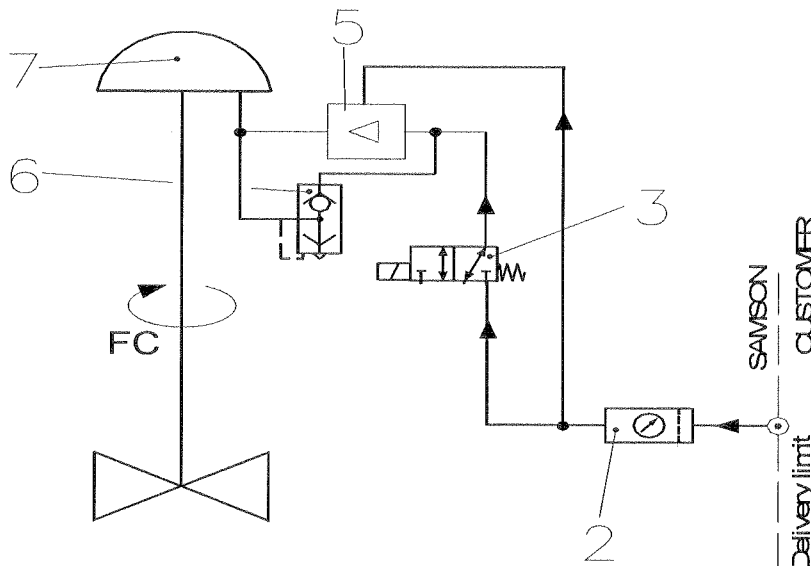
## 2nd ZAGROS Methanol Plant

Date:

2005-06-01

**Name:**

V12/sro



Supply air connection 1/2 NPT

Pos.	Meßstelle
Pos.	Tag No.
	UV400202A
	UV400202B

Pos	Stck.	Bezeichnung	Typ / Fabr.	pn. Anschl.	Sachnr.		
Pos	Qty.	Description	Type / Manuf.	pneu. Con.	Part No.		
1		Stellungsregler/ Positioner					
2	1	Zuluftstation/ Air set	B74G-6AK-AP3-RMN Norgren	3/4" NPT			
3	1	Magnetventil/ Solenoid valve	3963-1352 SAMSOMATIC	1/4" NPT			
4		Drossel/ Throttle valve					
5	1	Volumenverstärker/ Booster	4500A Fairchild	3/4" NPT	8523-0046		
6	1	Schnellentlüfter/ Quick exhaust	4050414 Herion	G 3/4"	8502-0144		
7	1	Antrieb/ Actuator	GP-130-585A/C4 Rotork	1" NPT			
8		Verblockrelais/ Lock up valve					
9		Sonstiges / Miscellaneous					
10							
11							
12		Pneu. Anschlußverschraubung / Pn. Connector					
13		Ausblaseschalldämpfer/ Vent Filter					
14		Filter/ Filter	<input type="checkbox"/> IP54 <input type="checkbox"/> IP65				
15							
Rohr/ Pipe	Größe/ Size		Dimensions	Material			
	1/2		{cm} [inch]	St.St.			
Fitting	<input type="checkbox"/> ERMETO <input checked="" type="checkbox"/> SWAGELOK <input type="checkbox"/> PARKER <input type="checkbox"/> .....						
Stellzeit/ Stroking time	Bewegungsrichtung/ Direction		100 ... 0%	0....100%	ON/OFF mit Magnetventil (with Solenoidvalve)		
	Vorgabe/ requested [s]						
	Gemessen/ measured [s]						

Funktion / Function	
1	1
2	2
3	3
4	4
5	5
6	6
7	7
8	8
9	9
10	10
11	11
12	12
13	13
14	14
15	15
16	16
17	17
18	18
19	19
20	20
21	21
22	22
23	23
24	24
25	25
26	26
27	27
28	28
29	29
30	30
31	31
32	32
33	33
34	34
35	35
36	36
37	37
38	38
39	39
40	40
41	41
42	42
43	43
44	44
45	45
46	46
47	47
48	48
49	49
50	50
51	51
52	52
53	53
54	54
55	55
56	56
57	57
58	58
59	59
60	60
61	61
62	62
63	63
64	64
65	65
66	66
67	67
68	68
69	69
70	70
71	71
72	72
73	73
74	74
75	75
76	76
77	77
78	78
79	79
80	80
81	81
82	82
83	83
84	84
85	85
86	86
87	87
88	88
89	89
90	90
91	91
92	92
93	93
94	94
95	95
96	96
97	97
98	98
99	99
100	100





# Verrohrungsplan / Hook up Plan\ No. RC270

Revision:

SAMSON No:

616 200

Project:

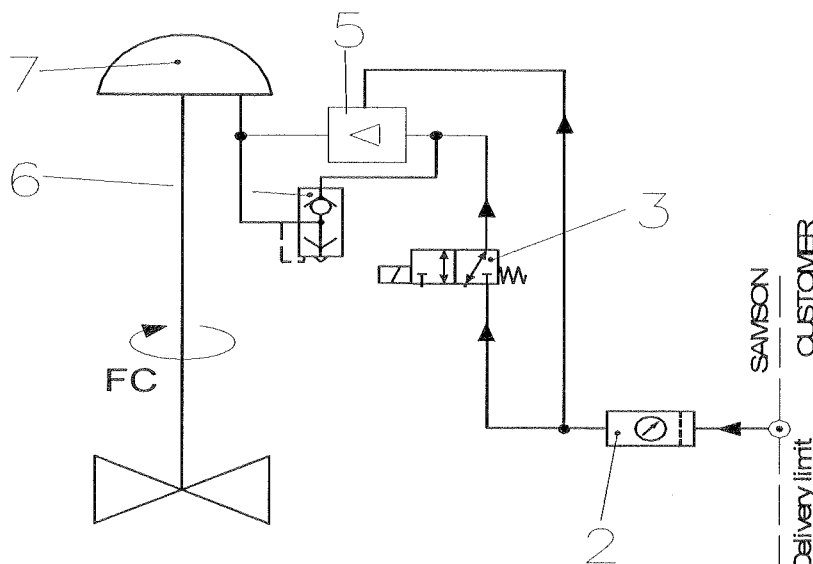
2nd ZAGROS Methanol Plant

Date:

2005-06-01

Name:

V12/sro



Supply air connection 1/2 NPT

Pos.	Meßstelle
Pos.	Tag No.

UV250104

Pos	Stck.	Bezeichnung	Typ / Fabr.	pn. Anschl.	Sachnr.
Pos	Qty.	Description	Type / Manuf.	pneu. Con.	Part No.
1		Stellungsregler/ Positioner			
2	1	Zuluftstation/ Air set	B74G-6AK-AP3-RMN Norgren	3¼" NPT	
3	1	Magnetventil/ Solenoid valve	3963-1352 SAMSOMATIC	1¼" NPT	
4		Drossel/ Throttle valve			
5	1	Volumenverstärker/ Booster	4500A Fairchild	3¼" NPT	8523-0046
6	1	Schnellentlüfter/ Quick exhaust	4050414 Herion	G ¾"	8502-0144
7	1	Antrieb/ Actuator	RC270 Remote Control	R 1/4"	
8		Verblockrelais/ Lock up valve			
9		Sonstiges / Miscellaneous			
10					
11					
12		Pneu. Anschlußverschraubung / Pn. Connection			
13		Ausblaseschalldämpfer/ Vent Filter			
14		Filter/ Filter	<input type="checkbox"/> IP54 <input type="checkbox"/> IP65		
15					
Rohr/ Pipe		Größe/ Size	Dimensions	Material	
		1½	{cm}    {inch}	St.St.	
Fitting		<input type="checkbox"/> ERMETO <input checked="" type="checkbox"/> SWAGELOK <input type="checkbox"/> PARKER <input type="checkbox"/> .....			
Stellzeit/ Stroking time		Bewegungsrichtung/ Direction	100 ... 0%	0....100%	ON/OFF mit Magnetventil (with Solenoidvalve)
		Vorgabe/ requested [s]			
		Gemessen/ measured [s]			

Funktion / Function

## Index of Revisions

Rev.	Sheet	Prepared, revised		Checked	Approved			Remark, kind of revision
		Name	Date		Name	Date	Status	
00	1 to 7	V12/sro	2004-09-01	V12/lf	V12/di	2004-09-10		First issue
01	22	V12/sro	2005-06-01	V12/lf	V12/di	2005-06-10	FI	FINAL ISSUE