

3/2 directional control valves



Nominal sizes 15 to 50
Pneumatically actuated
piston seat valves
Port sizes G 1/2 to G 2
Operating pressure 0 to 16 bar

Sales range Pneumatics
P 405 DP-KFO

Series 80300

Publication 7501103.06.02.83

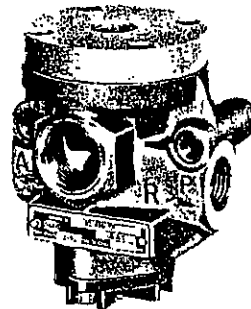
Description

Directional valve for filtered,
lubricated or non-lubricated air

Flow direction: Determined
Temperature range: -10 ... +60 °C

Features

- High flow performance
- Operation without lubricants
- Convenient to service
- High switching frequency



Characteristic data

Symbol	Nominal size	Port size	Operating pressure [bar]		Pilot pressure ¹⁾ [bar]		k _v -value (C _v (US) ≈ k _v × 1.2)	Weight [kg]	Sectional drawing No.	Dimensional drawing No.	Cat No
			min.	max.	min.	max.					
	15	G 1/2	0	16	1	16	5	0.8	01	01	8036510
	20	G 3/4	0	16	1	16	8	1.0	02	01	8036610
	25	G 1	0	16	1	16	12	1.0	03	01	8036710
	30	G 1	0	10	1	10	18	2.2	04	01	8036810
	40	G 1 1/2	0	10	1	10	25	2.9	05	01	8036910
	50	G 2	0	10	1	10	35	5.7	06	01	8037010

Thread symbol G to ISO 228/1 replaces former symbol R to DIN 259.

¹⁾ Pilot pressure ≥ operating pressure, at least, however, 1 bar.

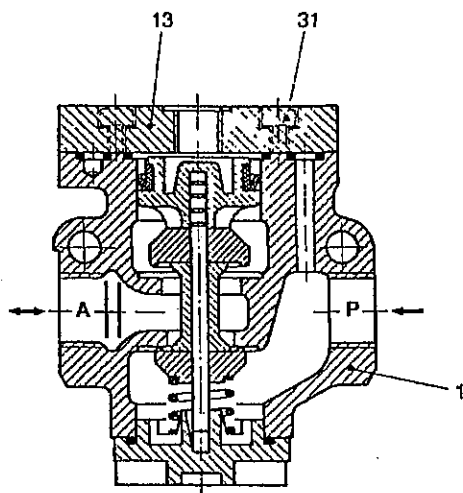
Other versions available on request

- Single air-pilot models, normally open
- Double air-pilot models

HERION-WERKE KG · FLUIDTRONIK® · Postfach 15 60 · D-7012 Fellbach
Stuttgarter Straße 120 · Telefon (07 11) 52 09-0 · Fax (07 11) 52 09-6 14 · Telex 7 254 507

Sectional drawings

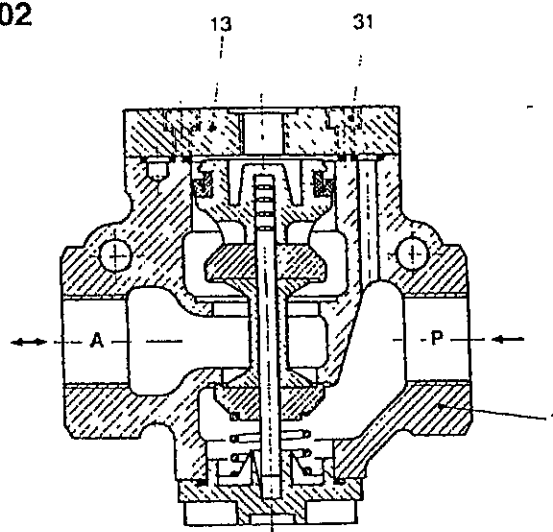
01



1 Body assly.
13 Plate
31 Screw

Spare parts kit
Cat. No. 0555571

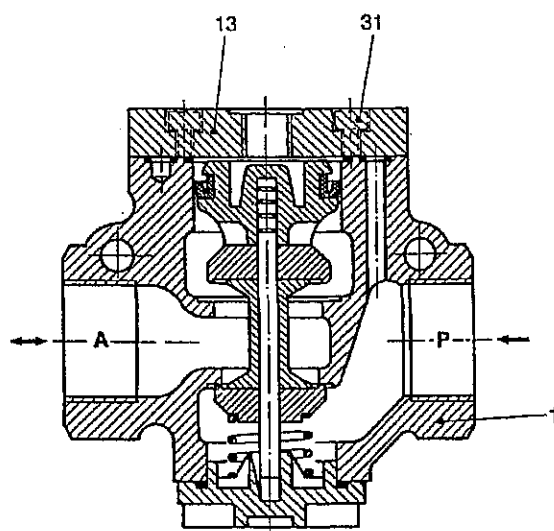
02



1 Body assly.
13 Plate
31 Screw

Spare parts kit
Cat No 0555572

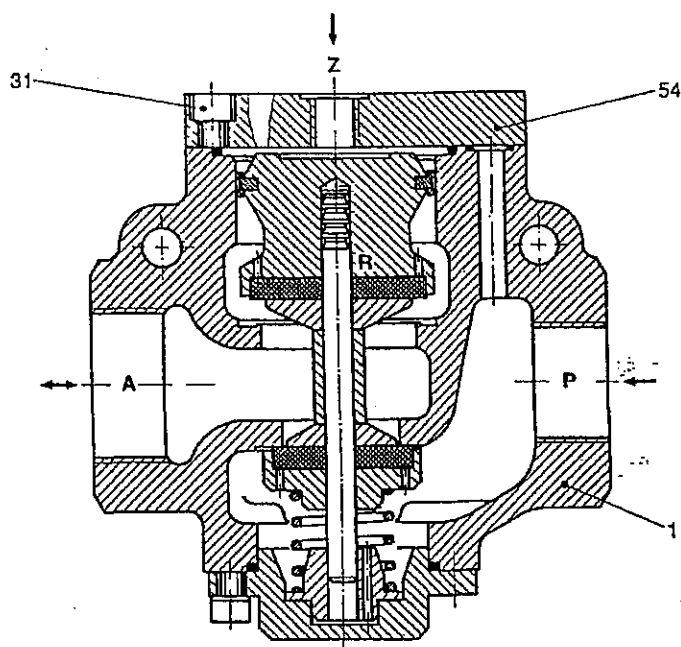
03



1 Body assly.
13 Plate
31 Screw

Spare parts kit
Cat. No. 0555572

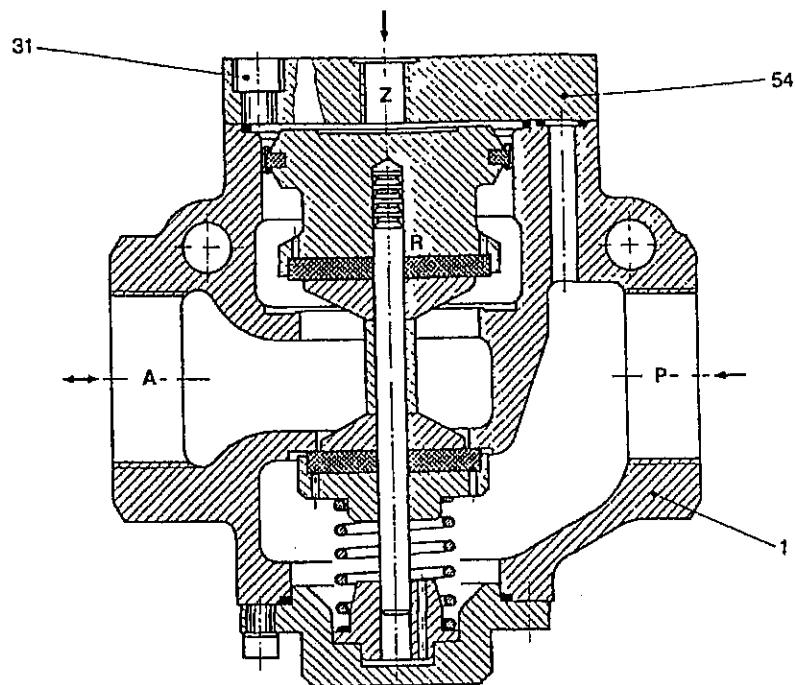
04



1 Body assly.
31 Screw
54 Plate

Spare parts kit
Cat. No. 0557153

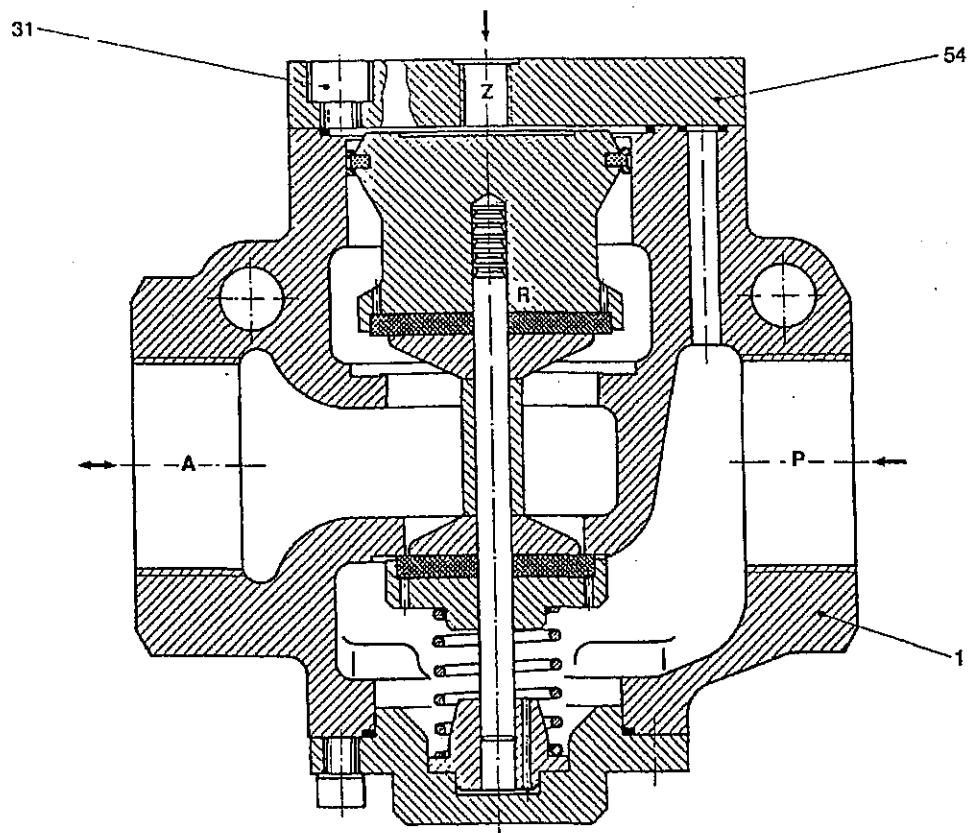
05



1 Body assly.
31 Screw
54 Plate

Spare parts kit
Cat. No. 0557154

06



1 Body assly.
31 Screw
54 Plate

Spare parts kit
Cat. No. 0557155

Dimensional drawing

01

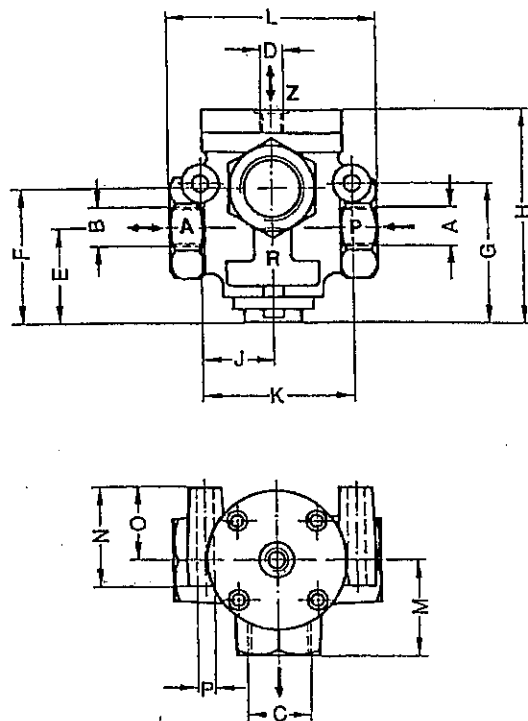


Table of dimensions

Cat No.	A	B	C	D	E	F	G	H	J	K	L	M	N	O	ØP	Dia at valve seat
8036510	G½	G½	G¾	G¼	48.5	63.5	65.5	105.5	32	71	86	39	52	39	9	19
8036610	G¾	G¾	G1	G¼	51.5	73	75	115.5	39	82.6	112	52	54	40	9	25
8036710	G1	G1	G1	G¼	51.5	73	75	115.5	39	82.6	112	52	54	40	9	26
8036810	G1	G1¼	G1¼	G¼	70	98	108	150	48	104	142	66	64	42	11	32
8036910	G1½	G1½	G1½	G¼	85	115.5	121.5	173	50.5	118	164	77	70	46	14	42
8037010	2	2	2	¼	98	137	144	209	66	148	200	97	85	56	18	50