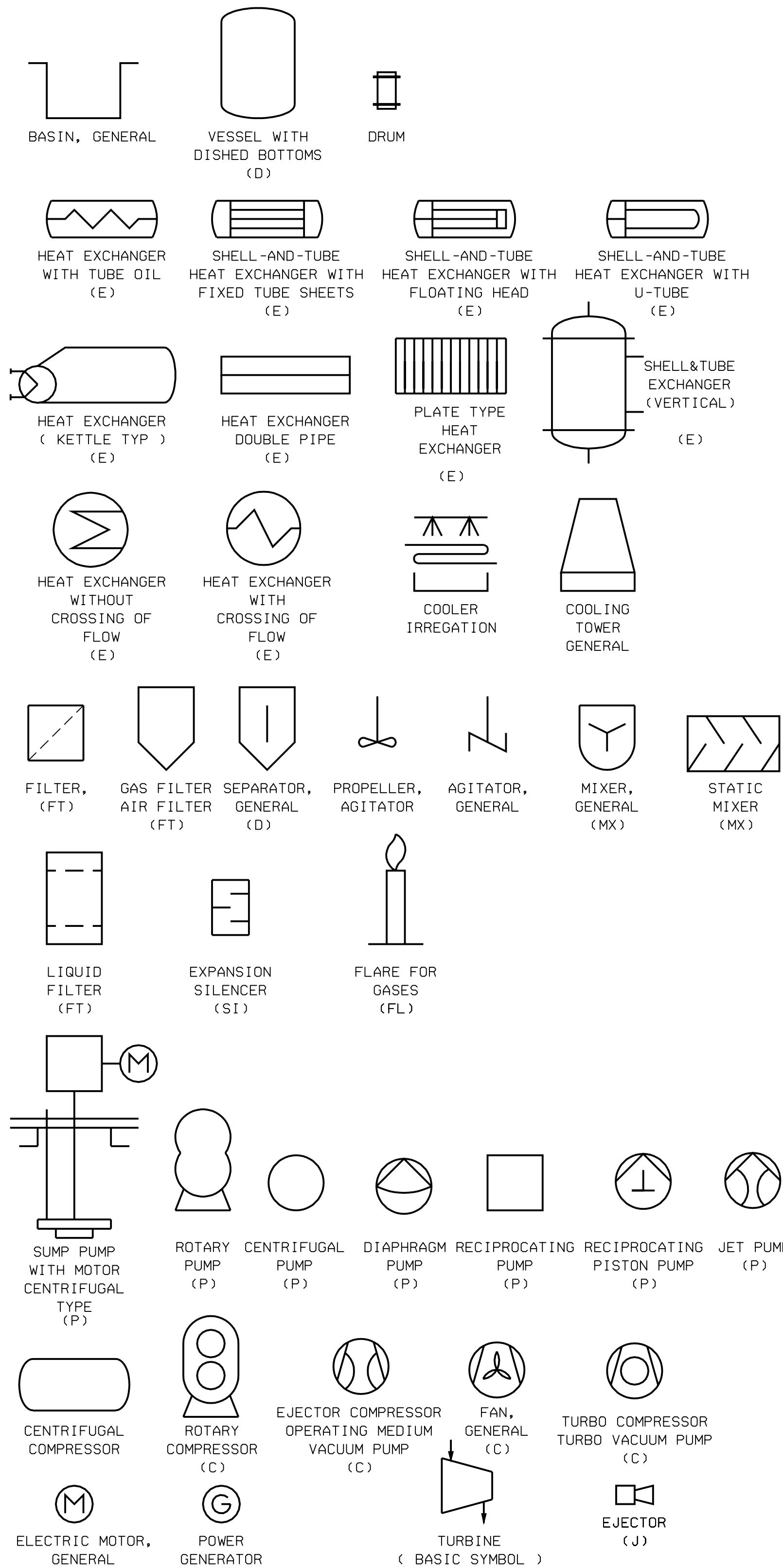


## IDENTIFICATION BOXES

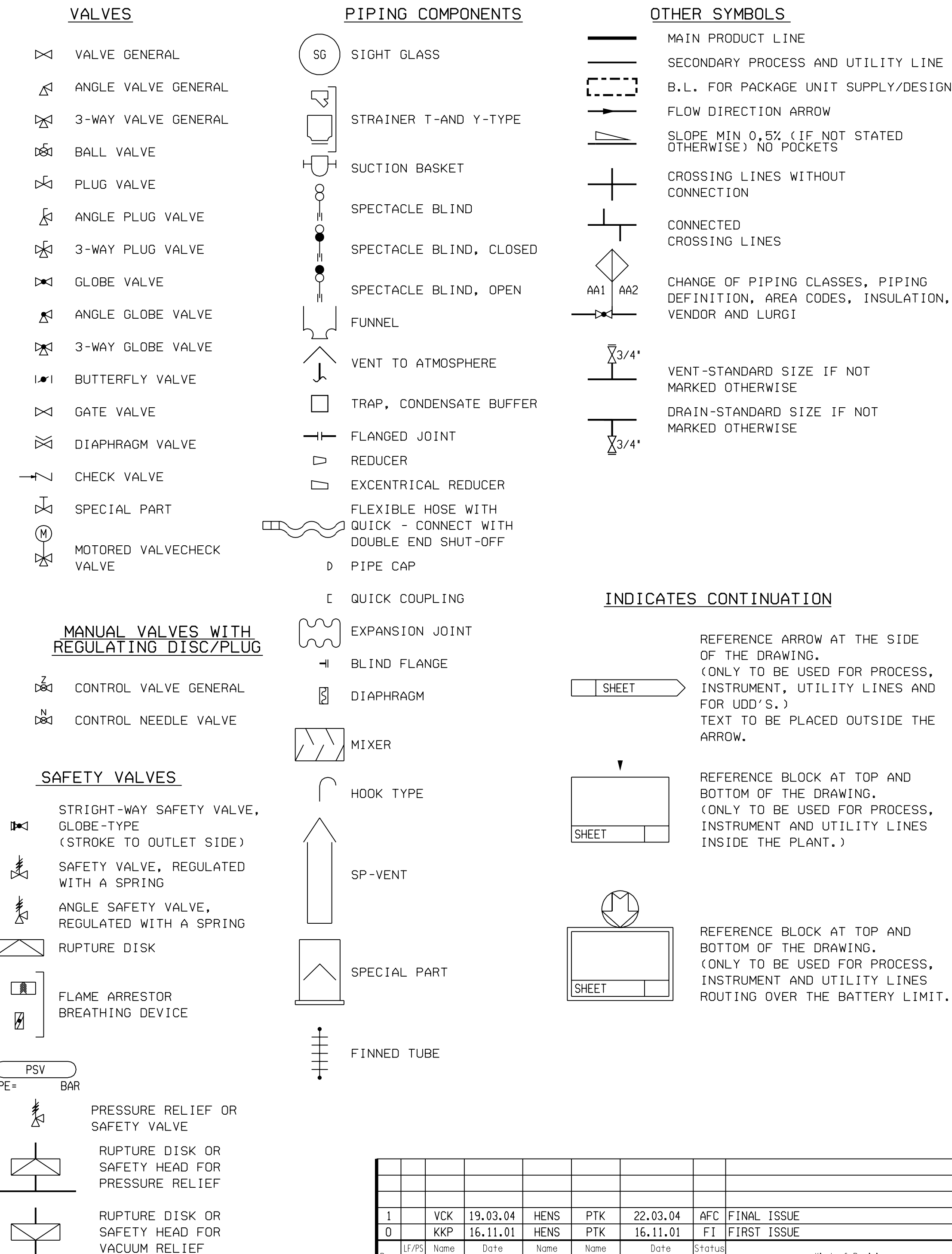
<b>Vnom</b> m3 <b>od</b> mm <b>ITL-TL</b> mm <b>pe *</b> bar <b>t *</b> °C <b>* = ALLOWABLE</b>	<b>A</b> m2 <b>Shell- pe *</b> bar <b>side t *</b> °C <b>Tube- pe *</b> bar <b>side t *</b> °C <b>* = ALLOWABLE</b>	<b>Rated Power</b> kW <b>Inlet Operating pe *</b> bar <b>t *</b> °C <b>Design TB</b> bar <b>Outlet Operating pe *</b> bar <b>t *</b> °C <b>Design PB</b> bar <b>TB</b> bar <b>* = ALLOWABLE</b>	<b>Vnom</b> m3/h <b>dp</b> bar <b>pe max</b> bar
<b>VESSELS, COLUMNS, FILTERS, SILENCER</b>		<b>HEAT EXCHANGERS</b>	
<b>A</b> m2 <b>Cold- pe *</b> bar <b>side t *</b> °C <b>Hot- pe *</b> bar <b>side t *</b> °C <b>* = ALLOWABLE</b>		<b>HLT:</b> GJ/h <b>No.of Tubes</b> <b>No.of Burners</b>	
<b>WATER-COOLER</b>		<b>TURBINES</b>	

PUMPS, BLOWERS, EJECTORS AND COMPRESSORS

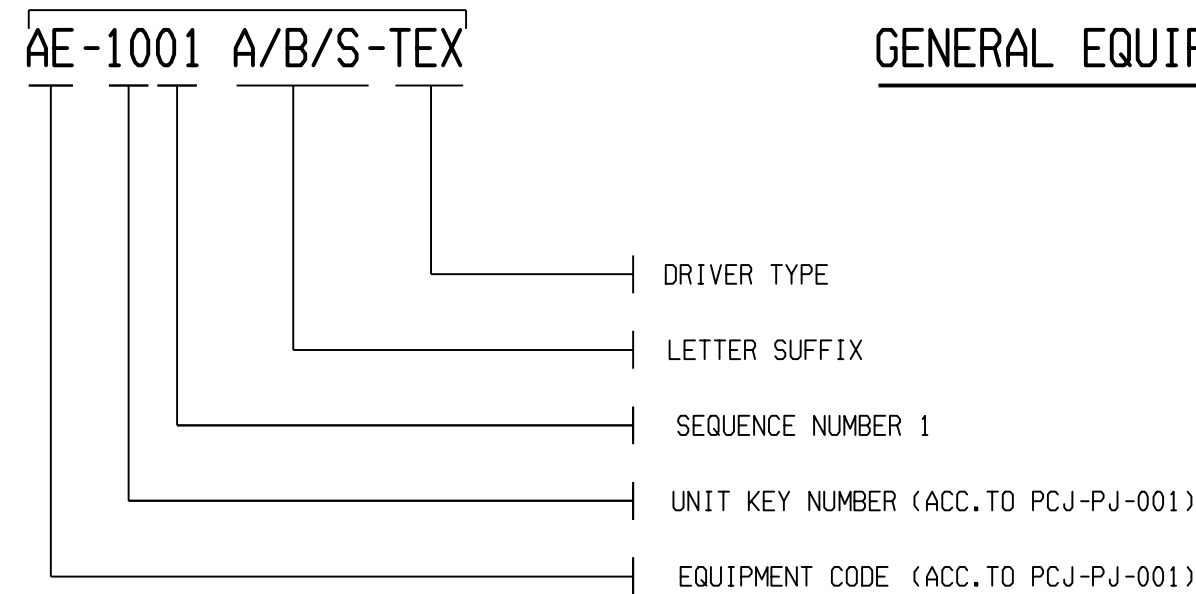
## EQUIPMENT SYMBOLS



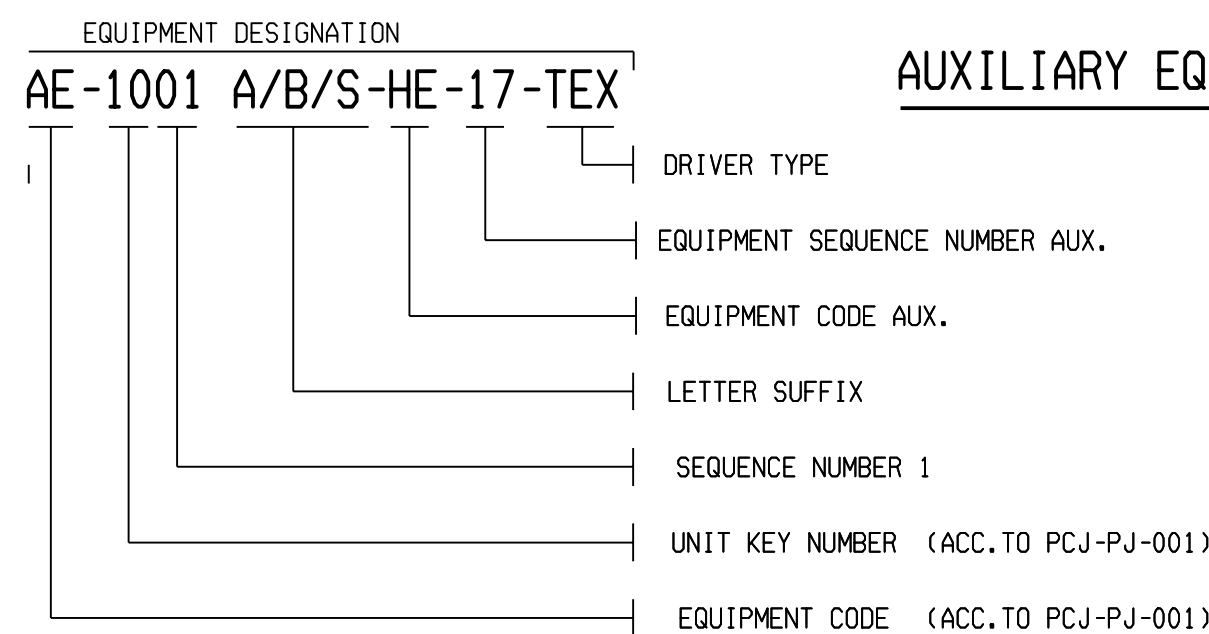
## PIPING SYMBOLS



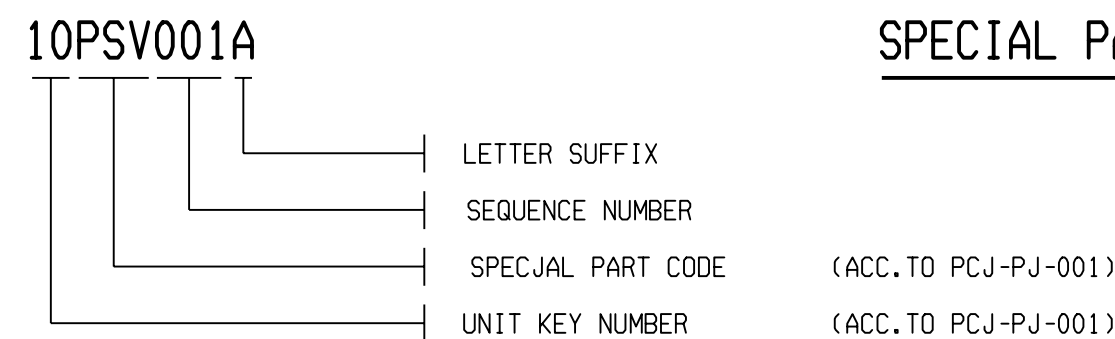
## GENERAL EQUIPMENT



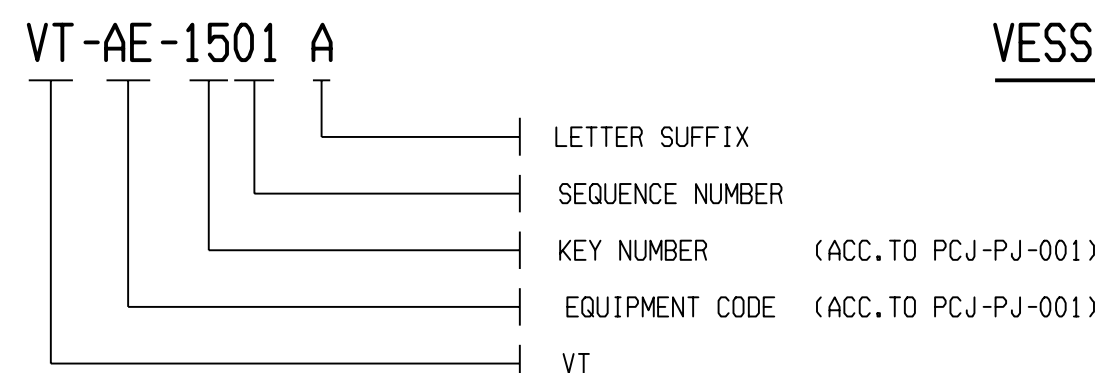
## AUXILIARY EQUIPMENT



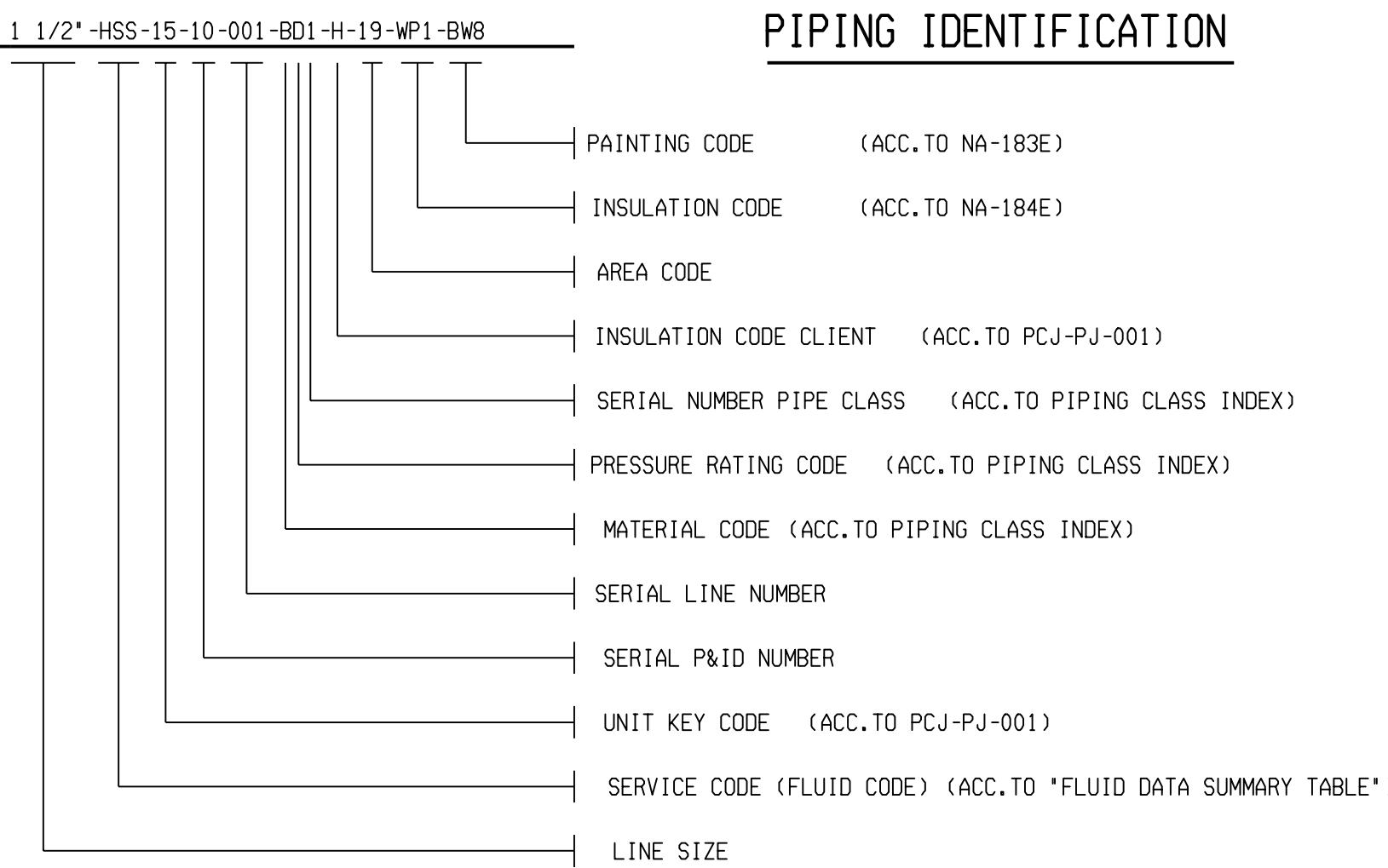
## SPECIAL PART NUMBERING



## VESSEL TRIM



## PIPING IDENTIFICATION



## PLANT UNITS

UNIT NO.	UNIT	KEY NO.	PID NO.
000	WASTE WATER AND SANITARY SYSTEM	00	
100	REFORMING	10	
150	STEAM AND CONDENSATE SYSTEM	15	
200	METHANOL SYNTHESIS	20	
250	HYDROGEN RECOVERY (PSA)	25	
300	METHANOL DISTILLATION	30	
400	INTERMEDIATE TANK FARM	40	
450	STORAGE TANKS AND LOADING	45	
500	WATER TREATMENT	50	
600	COOLING WATER SYSTEM	60	
700	FLARE SYSTEM	70	
750	LP-NITROGEN AND AIR DISTRIBUTION	75	
800	EMERGENCY POWER GENERATION	80	
900	FIRE FIGHTING SYSTEM	90	

## CODE LETTERS FOR INSULATION ACC. TO PCJ-PC-001

H	HEAT INSULATION
P	HEAT INSULATION AS PERSONNEL PROTECTION
E	HEAT INSULATION WITH ELECTRIC TRACE HEATING
V	SOUND INSULATION
D	ANBI-SWEAT TRACING
M	COLD INSULATION
S	SPECIAL INSULATION
T	STEAM TRACING

## ABBREVIATIONS

LC	LOCKED CLOSED
LO	LOCKED OPEN
NC	NORMALLY CLOSED
NO	NORMALLY OPEN
TSO	TIGHT SHUT OFF
L	LURGI
IAS	INSTRUMENT AIR SUPPLY
NPC	NATIONAL PETROCHEMICAL COMPANY
V	VENDOR
FC	FAIL CLOSED
FO	FAIL OPEN
PB	MAX. ALLOWABLE WORKING PRESSURE (GAUGE)
TB	MAX. ALLOWABLE WORKING TEMPERATURE
SP	SETPOINT

## NOTES:

- VENTS AT HIGH POINTS AND DRAINS AT LOW POINTS FOR HYDROSTATIC TESTINGS ARE NOT SHOWN ON PID'S.
- CONDENSATE REMOVAL ON STEAM LINES IS NOT SHOWN ON PID.DURING DETAIL ENGINEERING
- FLANGED AND WELDED CONNECTIONS ARE NORMALLY NOT SHOWN
- GIVEN PRESSURES ARE GAUGE PRESSURES UNLESS OTHERWISE NOTED

1	VCK	19.03.04	HENS	PTK	22.03.04	AFC	FINAL ISSUE
0	KKP	16.11.01	HENS	PTK	16.11.01	FI	FIRST ISSUE
Rev.	U/P/PS	Name	Date	Name	Date	Status	Kind of Revision
	Prepared/Changed	Checked		Approved			
ZAGROS PETROCHEMICAL COMPANY				OWNER : NATIONAL PETROCHEMICAL COMPANY ZAGROS PETROCHEMICAL COMPLEX شرکت پتروشیمی زاگرس			
DISPOSITION: <input type="checkbox"/> NO COMMENT <input type="checkbox"/> COMMENTS AS MARKED.FABRICATION CAN PROCEED ACCORDINGLY.REVISED DOC'T TO BE ISSUED EITHER FOR REVIEW OR AS FINAL CERTIFIED, HOWEVER ZAGROS WILL CHECK THIS REVISED DOCUMENT FOR PROPER INCORPORATION.				PROJECT : 4th METHANOL PROJECT			
<input type="checkbox"/> REJECTED DOCUMENT TO BE REISSUED. <input type="checkbox"/> USE FOR INFORMATION ONLY.		OWNER		CONTRACTOR	DWG. NO.	Rev.	
SIGNATURE		DATE		CONTRACTOR :		PETROCHEMICAL INDUSTRIES DESIGN & ENGINEERING COMPANY شرکت طراحی و مهندسی صنایع پتروشیمی	
ZAGROS REVIEW & COMMENTS DOES NOT ABSOLVE THE VENDOR OF THE RESPONSIBILITY FOR THE CORRECT DESIGN,MANUFACTURING AND OPERATION OF EQUIPMENT.		ZPC PROJ.NO. 40404277		DWG. NO.		Rev.	
Scales:		Original Size:		P&I DIAGRAM		SHEET 001	
Nominations:		LEGENDS		P&I DIAGRAM		SHEET 001	
Basic documents:		DCC		DG		DL-No.	
Job names:		Lurgi Job No.		Lurgi Document No.		Rev.	
MEGA METHANOL IRAN		I6966601		37101		1	
EDV-Ident-No.:		igs7 e:\pipe\696660\lur		d_37101.pld		004 25.03.04 VCK	
						IGW61	