




Contractor:  TIANCHEN CORP. CHINA	PROJECT	MKP Methanol Project			Owner :  شرکت کیمیايي پارس خاورميانه Middle East Kantoza Pars Co.	
	UNIT	Flare	PHASE	Detail Engineering		
	Owner No.	MKP-VD-8500-237-507-A3				
	Contractor No.	MKP-11-DE-9000-FE-REQ-237				
Vendor:  SUNPOWER GROUP LTD	Vendor No.	17013D85000PE00-13			Rev. : 2	Page : 1 of 24

Pipe Support List

2	29.11.2018	Final Issue	Geng Yun Fei	Bai Yang	Ji Ningbo	
1	08.11.2018	Final Issue	Geng Yun Fei	Bai Yang	Ji Ningbo	
0	14.12.2017	Final Issue	Geng Yun Fei	Bai Yang	Ji Ningbo	
C	07.11.2017	Issued For Review	Geng Yun Fei	Bai Yang	Ji Ningbo	
A	17.07.2017	Issued For Review	Geng Yun Fei	Bai Yang	Ji Ningbo	
REV.	DATE	PURPOSE OF ISSUE	PREPARE	CHECK	REVIEW	APPROVE

DOC. MKP-VD-8500-237-507-A3

Item No.	Line No.	SUPPORT NAME	MARK NO.	QTY	El.(mm)		Size(mm)						Remark
					I	II	A	B	C	D	E	F	
85J0101	64"-FLG-85-200-B24-P8	SEAT TYPE SUPPORT[II] (Manufacture by 10mm steel plate)	J10[II];Length=500mm	1	94000		309.2	1430	1180	920			Anchor,Page 24
		ANGLE STEEL L80X80X7		1.8m									
85J0102	64"-FLG-85-200-B24-P8	SEAT TYPE SUPPORT[II] (Manufacture by 10mm steel plate)	J10[II]	1	94000		293.2	1430	1180	920			
85J0103	64"-FLG-85-200-B24-P8	SEAT TYPE SUPPORT[II] (Manufacture by 10mm steel plate)	J10[II]	1	94000		277.2	1430	1180	920			
85J0104	64"-FLG-85-200-B24-P8	SEAT TYPE SUPPORT[II] (Manufacture by 10mm steel plate)	J10[II]	1	94027		234.2	1430	1180	920			Page 19
	64"-FLG-85-200-B24-P8	SPRING	VS30F ₁ 19	2	93600		427						
85J0105	64"-FLG-85-200-B24-P8	SEAT TYPE SUPPORT[II] (Manufacture by 10mm steel plate)	J10[II]	1	94058		187.2	1430	1180	920			Page 19
	64"-FLG-85-200-B24-P8	SPRING	VS60F ₁ 13	2	93600		458						
85J0201	4"-FLG-85-201-B24-P8	"U" BOLT(Inch)[I]	A1-2(4)[I]	1	95150								Guide,Page 22
		ANGLE STEEL L80X80X7		0.4m	95150								
85J0202	4"-FLG-85-201-B24-P8	"U" BOLT(Inch)[I]	A1-2(4)[I]	1	92450								Guide,Page 22
		ANGLE STEEL L80X80X7		0.4m	92450								
85J0203	4"-FLG-85-201-B24-P8	"T" SHOE SUPPORT (CLAMP)	J2(1a-A5-2)	1	90500		100	200					Page 20
	4"-FLG-85-201-B24-P8	CLAMP(Inch)	A5-2(4)	2									
		ANGLE STEEL L80X80X7		1.5m									
		STEEL PLATE Th=10mm		0.04m ²									
		EXPANSION BOLT M12/50		4									
85J0204	4"-FLG-85-201-B24-P8	"T" SHOE SUPPORT (CLAMP)	J2(1a-A5-2)	1	89300		100	200					Page 20
	4"-FLG-85-201-B24-P8	CLAMP(Inch)	A5-2(4)	2									
		ANGLE STEEL L80X80X7		0.3m									
		STEEL PLATE Th=10mm		0.04m ²									
		EXPANSION BOLT M12/50		4									
85J0205	4"-FLG-85-201-B24-P8	ELBOW SUPPORT (CLAMP)	G11(A8-2)	1	89950	89200	800						Page 24
	4"-FLG-85-201-B24-P8	3-BOLTS CLAMP(Inch)	A8-2(4)	1									
		EXPANSION BOLT M12/50		4									
85J0206	4"-FLG-85-201-B24-P8	GUIDE SUPPORT	E9	1	90500		1290	200					Guide,Page 21

DOC. MKP-VD-8500-237-507-A3

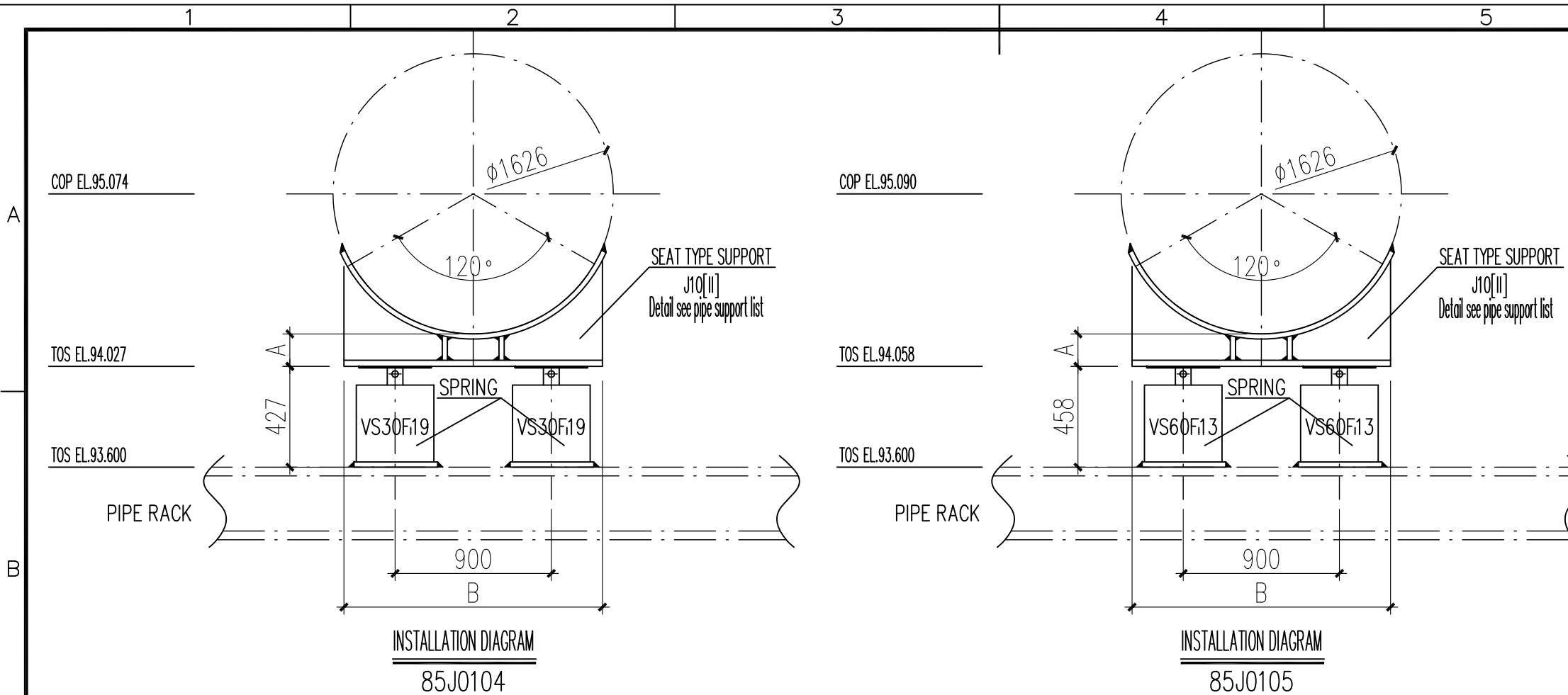
Item No.	Line No.	SUPPORT NAME	MARK NO.	QTY	El.(mm)		Size(mm)						Remark	
					I	II	A	B	C	D	E	F		
	4"-FLG-85-201-B24-P8	"T" SHOE SUPPORT (CLAMP)	J2(1a-A5-2)	1	90500		100	200						
	4"-FLG-85-201-B24-P9	CLAMP(Inch)	A5-2(4)	2										
		STEEL PLATE Th=10mm		0.04m ²										
		EXPANSION BOLT M12/50		4										
85J0301	2"-HPS-85-200-F24-H6	"T" SHOE SUPPORT (WELDING)	J1(1a)	1	93600		100	200					Anchor	
85J0302	2"-HPS-85-200-F24-H6	BOTTOM LEG OF ELBOW	F8	1	90000	89200	790		200				Leg Spec. 1 1/2" sch80	
		STEEL PLATE Th=10mm		0.16m ²									Page 20	
		EXPANSION BOLT M12/50		4										
85J0303	2"-HPS-85-200-F24-H6	"T" SHOE SUPPORT (CLAMP)	J2(1a-A5-2)	1	89870		100	200					Page 20	
	2"-HPS-85-200-F24-H6	CLAMP(Inch)	A5-2(2)	2										
		ANGLE STEEL L80X80X7		0.7m										
		STEEL PLATE Th=10mm		0.04m ²										
		EXPANSION BOLT M12/50		4										
85J0304	2"-HPS-85-200-F24-H6	"T" SHOE SUPPORT (CLAMP)	J2(1a-A5-2)	1	89870		100	200					Page 20	
	2"-HPS-85-200-F24-H6	CLAMP(Inch)	A5-2(2)	2										
		ANGLE STEEL L80X80X7		0.7m										
		STEEL PLATE Th=10mm		0.04m ²										
		EXPANSION BOLT M12/50		4										
85J0305	2"-HPS-85-200-F24-H6	"T" SHOE SUPPORT (CLAMP)	J2(1a-A5-2)	1	89757		100	100					Page 20	
	2"-HPS-85-200-F24-H6	CLAMP(Inch)	A5-2(3/4)	2										
		ANGLE STEEL L80X80X7		0.6m										
		STEEL PLATE Th=10mm		0.04m ²										
		EXPANSION BOLT M12/50		4										
85J0306	2"-HPS-85-200-F24-H6	"T" SHOE SUPPORT (CLAMP)	J2(1a-A5-2)	1	89870		100	200					Page 20	
	2"-HPS-85-200-F24-H6	CLAMP(Inch)	A5-2(2)	2										
		ANGLE STEEL L80X80X7		0.7m										
		STEEL PLATE Th=10mm		0.04m ²										
		EXPANSION BOLT M12/50		4										
85J0401	2"-HPS-85-201-D24-H6	"T" SHOE SUPPORT (CLAMP)	J2(1a-A5-2)	1	89870		100	200					Page 20	

DOC. MKP-VD-8500-237-507-A3

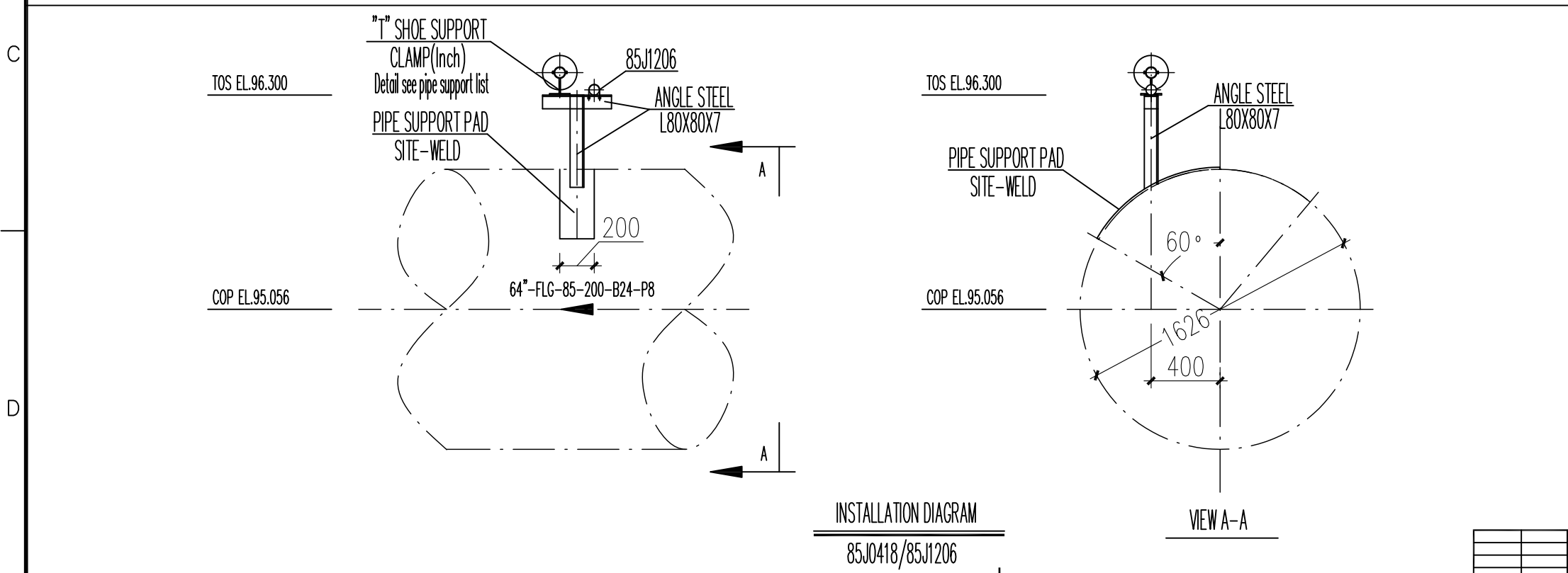
Item No.	Line No.	SUPPORT NAME	MARK NO.	QTY	El.(mm)		Size(mm)						Remark
					I	II	A	B	C	D	E	F	
		ANGLE STEEL L80X80X7		1.9m									
		STEEL PLATE Th=10mm		0.08m ²									
		EXPANSION BOLT M12/50		8									
85J0408	2"-HPS-85-201-D24-H6	"T" SHOE SUPPORT (CLAMP)	J2(1a-A5-2)	1	89870		100	200					Page 20
	2"-HPS-85-201-D24-H6	CLAMP(Inch)	A5-2(2)	2									
		ANGLE STEEL L80X80X7		0.7m									
		STEEL PLATE Th=10mm		0.04m ²									
		EXPANSION BOLT M12/50		4									
85J0409	2"-HPS-85-201-D24-H6	"T" SHOE SUPPORT (CLAMP)	J2(1a-A5-2)	1	89870		100	200					Page 20
	2"-HPS-85-201-D24-H6	CLAMP(Inch)	A5-2(2)	2									
85J0410	2"-HPS-85-201-D24-H6	GUIDE SUPPORT [I]	E5 [I]	1	89870		80						Guide,Page 20
	2"-HPS-85-201-D24-H6	"T" SHOE SUPPORT (CLAMP)	J2(1a-A5-2)	1	89870		100	200					
	2"-HPS-85-201-D24-H6	CLAMP(Inch)	A5-2(2)	2									
85J0411	2"-HPS-85-201-D24-H6	"T" SHOE SUPPORT (CLAMP)	J2(1a-A5-2)	1	89870		100	200					Page 20
	2"-HPS-85-201-D24-H6	CLAMP(Inch)	A5-2(2)	2									
85J0412	2"-HPS-85-201-D24-H6	"T" SHOE SUPPORT (CLAMP)	J2(1a-A5-2)	1	89870		100	200					Page 20
	2"-HPS-85-201-D24-H6	CLAMP(Inch)	A5-2(2)	2									
85J0413	2"-HPS-85-201-D24-H6	"T" SHOE SUPPORT (CLAMP)	J2(1a-A5-2)	1	89757		100	100					Page 20
	2"-HPS-85-201-D24-H6	CLAMP(Inch)	A5-2(3/4)	2									
		ANGLE STEEL L80X80X7		0.6m									
		STEEL PLATE Th=10mm		0.04m ²									
		EXPANSION BOLT M12/50		4									
85J0414	2"-HPS-85-201-D24-H6	"T" SHOE SUPPORT (CLAMP)	J2(1a-A5-2)	1	89757		100	100					Page 20
	2"-HPS-85-201-D24-H6	CLAMP(Inch)	A5-2(3/4)	2									
		ANGLE STEEL L80X80X7		0.6m									
		STEEL PLATE Th=10mm		0.04m ²									
		EXPANSION BOLT M12/50		4									
85J0415	2"-HPS-85-201-D24-H6	"T" SHOE SUPPORT (CLAMP)	J2(1a-A5-2)	1	92800		100	300					Page 21

DOC. MKP-VD-8500-237-507-A3

Item No.	Line No.	SUPPORT NAME	MARK NO.	QTY	El.(mm)		Size(mm)						Remark
					I	II	A	B	C	D	E	F	
	2"-HPS-85-201-D24-H6	CLAMP(Inch)	A5-2(2)	2									
	2"-HPS-85-201-D24-H6	"L" TYPE HANGER	B24	1	HOLD	92800	800	300					
85J0416	2"-HPS-85-201-D24-H6	"T" SHOE SUPPORT (CLAMP)	J2(1a-A5-2)	1	93600		100	300					
	2"-HPS-85-201-D24-H6	CLAMP(Inch)	A5-2(2)										
85J0417	2"-HPS-85-201-D24-H6	"T" SHOE SUPPORT (CLAMP)	J2(1a-A5-2)	1	93600		100	300					
	2"-HPS-85-201-D24-H6	CLAMP(Inch)	A5-2(2)										
85J0418	2"-HPS-85-201-D24-H6	"T" SHOE SUPPORT (CLAMP)	J2(1a-A5-2)	1	96300		100	300					Page 19
	2"-HPS-85-201-D24-H6	CLAMP(Inch)	A5-2(2)										
		ANGLE STEEL L80X80X7		1.2m									
		STEEL PLATE Th=10mm		0.18m ²									
85J0501	1"-HPS-85-202-D24-H6	"T" SHOE SUPPORT (CLAMP)	J2(1a-A5-2)	1	89870		113	200					Page 20
		CLAMP(Inch)	A5-2(1)	2									
85J0502	1"-HPS-85-202-D24-H6	"T" SHOE SUPPORT (CLAMP)	J2(1a-A5-2)	1	89883		100	200					Page 20
	1"-HPS-85-202-D24-H6	CLAMP(Inch)	A5-2(1)	2									
		ANGLE STEEL L80X80X7		0.8m									
		STEEL PLATE Th=10mm		0.04m ²									
		EXPANSION BOLT M12/50		4									
85J0503	1"-HPS-85-202-D24-H6	"T" SHOE SUPPORT (CLAMP)	J2(1a-A5-2)	1	89883		100	200					Page 20
	1"-HPS-85-202-D24-H6	CLAMP(Inch)	A5-2(1)	2									
		ANGLE STEEL L80X80X7		0.8m									
		STEEL PLATE Th=10mm		0.04m ²									
		EXPANSION BOLT M12/50		4									
85J0504	1"-HPS-85-202-D24-H6	"T" SHOE SUPPORT (CLAMP)	J2(1a-A5-2)	1	89883		100	200					Page 20
	1"-HPS-85-202-D24-H6	CLAMP(Inch)	A5-2(1)	2									
		ANGLE STEEL L80X80X7		0.8m									
		STEEL PLATE Th=10mm		0.04m ²									
		EXPANSION BOLT M12/50		4									
85J0505	1"-HPS-85-202-D24-H6	"T" SHOE SUPPORT (CLAMP)	J2(1a-A5-2)	1	89883		100	200					Page 20



PARAMETERS OF SPRING								
SUPPORT No.	SPRING TYPE	INSTALLATION LOAD	OPERATION LOAD	DISPLACEMENT(mm)		SPRING INSTALLATION HEIGHT	QUANTITY	STANDARD
		N	N	VERTICAL	HORIZONTAL	mm	set	
85J0104	VS30F19	52500	44350	10	35	427	2	HG/T20644-1998
85J0105	VS60F13	11140	10000	15	23	458	2	HG/T20644-1998



GENERAL NOTES

GENERAL NOTE:
 1. ALL DIMENSIONS ARE IN mm. ALL ELEVATIONS AND COORDINATES ARE IN m.
 2. DELETE.
 3. THE SITE WELDING OF BRACKET AND CML SHALL BE FULLY WELDED AND THE HEIGHT OF WELDING ANGLE SHOULD BE NO LESS THAN THE THICKNESS OF THINNER PART.
 4. AFTER THE BRACKET IS INSTALLED PAINTING IS NEEDED.
 5. FOR STAINLESS PIPE A THICKNESS=0.3mm STAINLESS PLATE SHOULD BE INSTALLED BETWEEN PIPE AND CLAMP OR U BOLT.
 6. FOR SEAT TYPE SUPPORT, THE DISCONTINUOUS ARC WELDING BETWEEN THE ARC PLATE AND THE PIPE OF THE SLIDING TUBE IS 100mm AND THE FIXED PIPE BRACKET IS FULL WELDED.

REFERENCE DRAWINGS

SYMBOLS AND LEGENDS

KEY PLAN

--	--	--	--	--	--	--	--	--	--

--	--	--	--	--	--	--	--	--	--

--	--	--	--	--	--	--	--	--	--

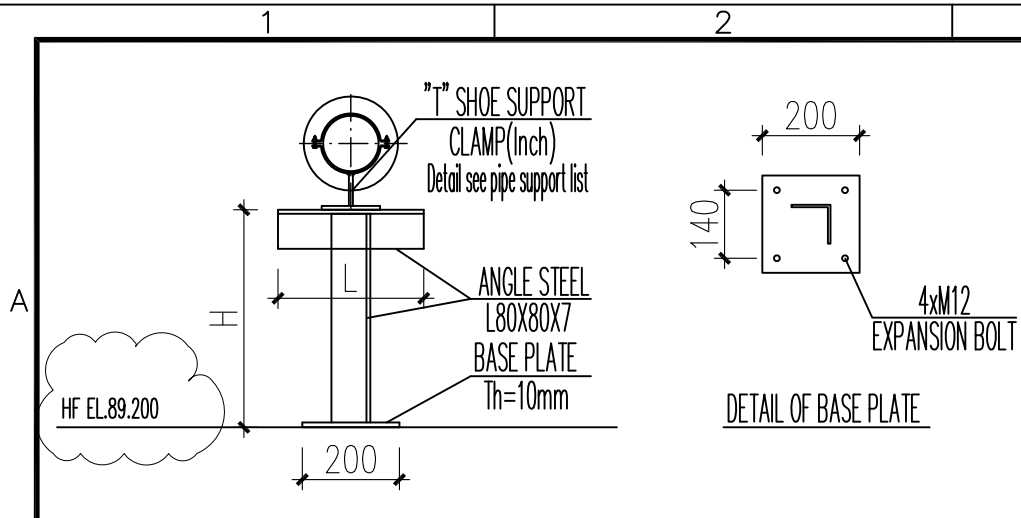
OWNER: **Middle East Kimiyae Pars Company**

--	--	--	--	--	--	--	--	--	--

--	--	--	--	--	--	--	--	--	--

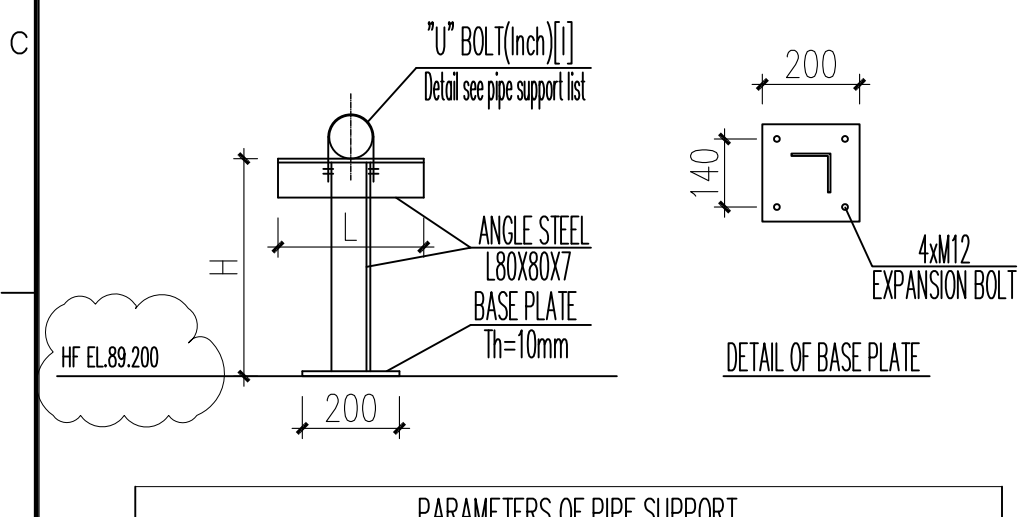
--	--	--	--

SCALE 1:15 SHEET 19 TOT. 24 SIZE A3 OWNER DWS NO. MKP-VD-8500-237-507-A3



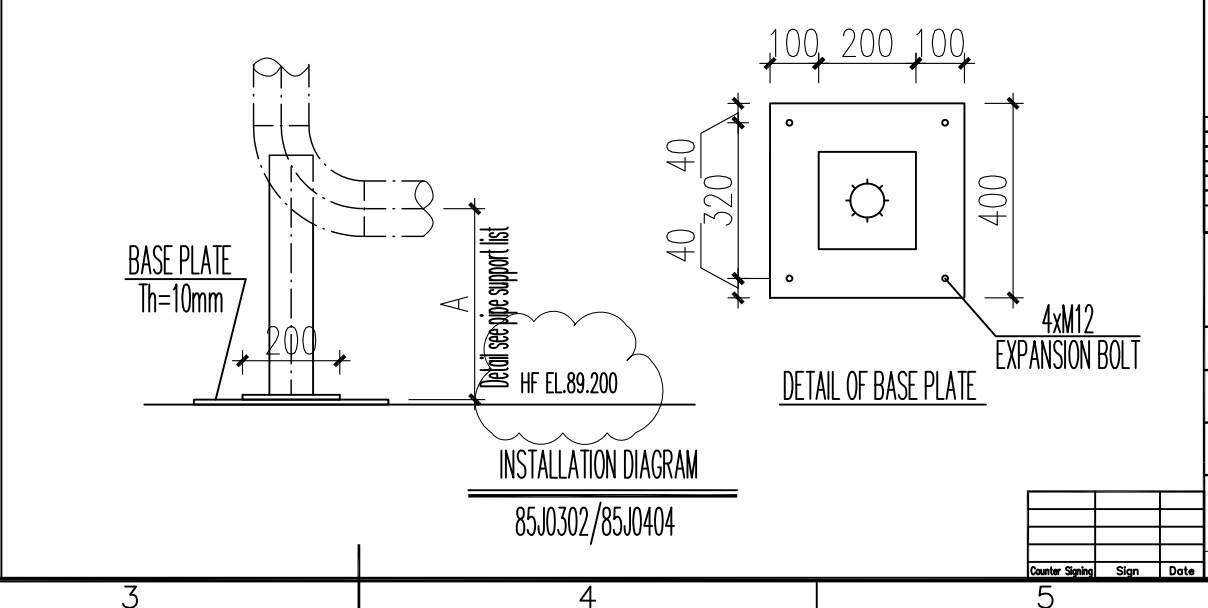
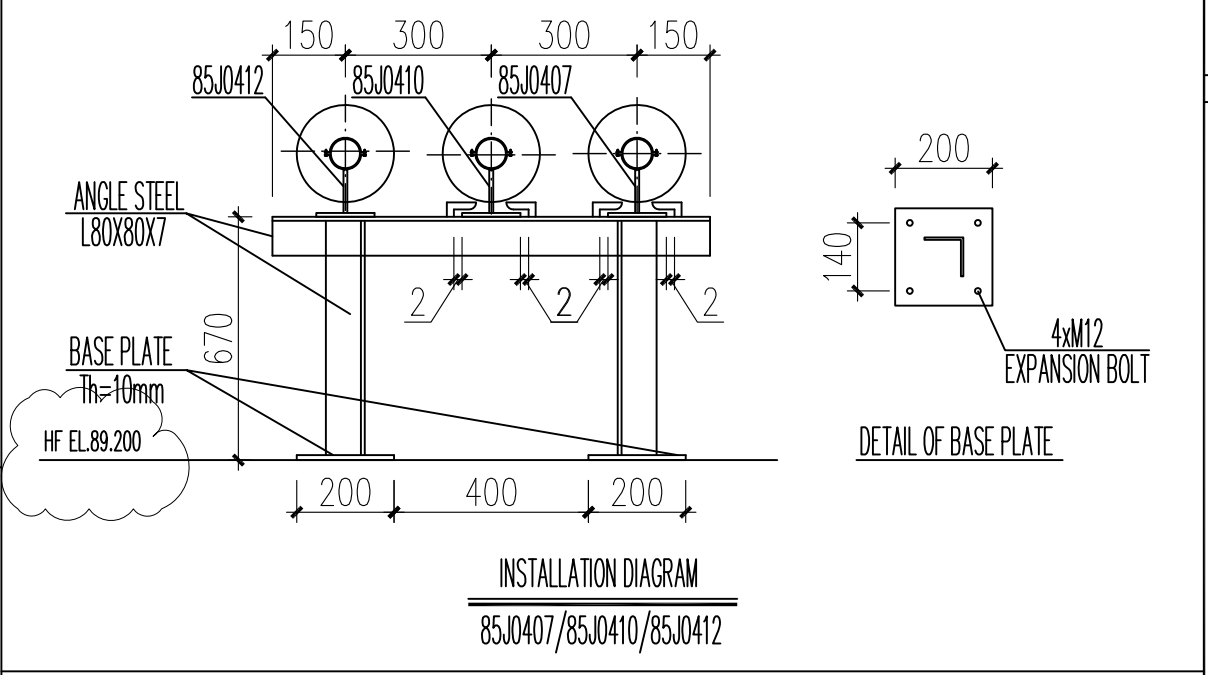
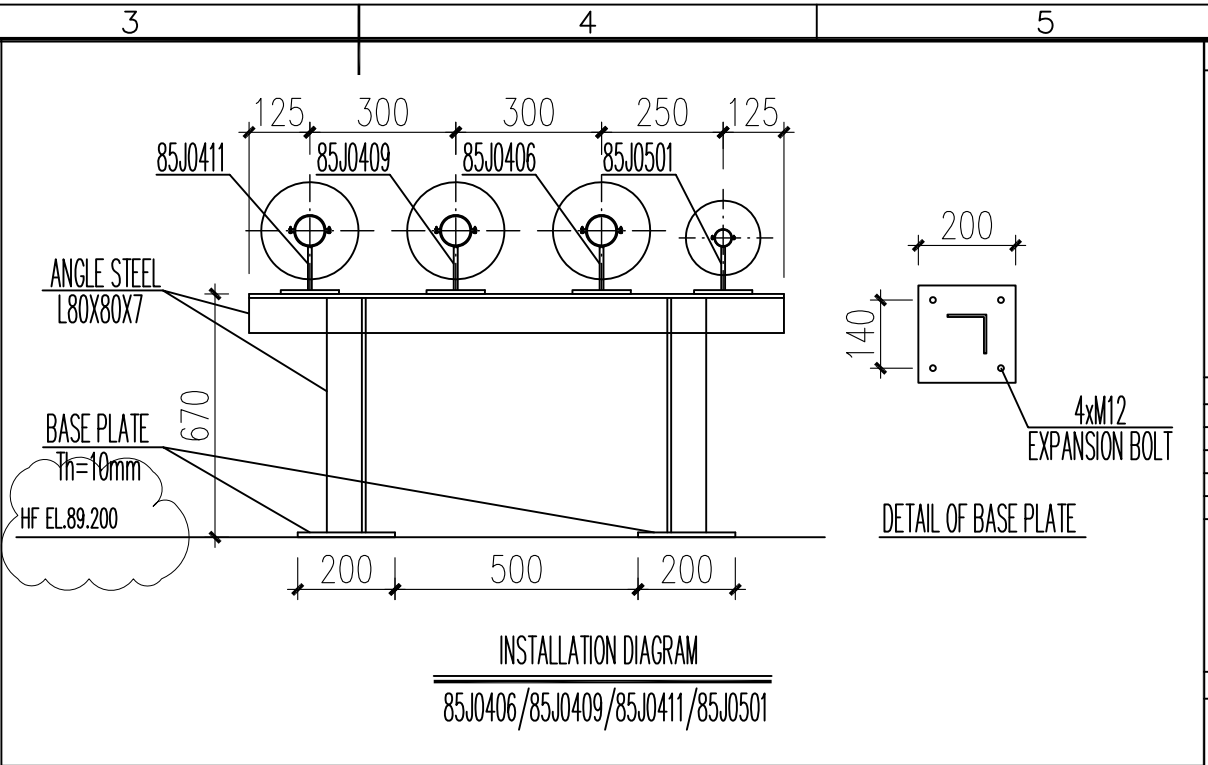
PARAMETERS OF PIPE SUPPORT

SUPPORT No.	SIZE		SUPPORT No.	SIZE	
	H(mm)	L(mm)		H(mm)	L(mm)
85J0203	1300	200	85J0504	683	200
85J0204	100	200	85J0505	683	200
85J0303	670	200	85J0506	683	200
85J0304	670	200	85J0602	183	200
85J0305	557	200	85J0704	450	200
85J0306	670	200	85J0705	450	200
85J0401	670	200	85J1401	450	200
85J0403	670	200	85J1402	450	200
85J0408	670	200	85J2501	436	200
85J0413	557	200	85J2502	436	200
85J0414	557	200	85J2503	436	200
85J0502	683	200	85J2504	436	200
85J0503	683	200	85J2505	436	200



PARAMETERS OF PIPE SUPPORT

SUPPORT No.	SIZE		SUPPORT No.	SIZE	
	H(mm)	L(mm)		H(mm)	L(mm)
85J1001	536	150	85J1201	551	100
85J1102	564	100	85J1202	551	100
85J1103	564	100			



GENERAL NOTES

GENERAL NOTE:
 1. ALL DIMENSIONS ARE IN mm. ALL ELEVATIONS AND COORDINATES ARE IN m.
 2. DELETE.
 3. THE SITE WELDING OF BRACKET AND CML SHALL BE FULLY WELDED AND THE HEIGHT OF WELDING ANGLE SHOULD BE NO LESS THAN THE THICKNESS OF THINNER PART.
 4. AFTER THE BRACKET IS INSTALLED PAINTING IS NEEDED.
 5. FOR STAINLESS PIPE A THICKNESS=0.3mm STAINLESS PLATE SHOULD BE INSTALLED BETWEEN PIPE AND CLAMP OR U BOLT.

REFERENCE DRAWINGS

SYMBOLS AND LEGENDS

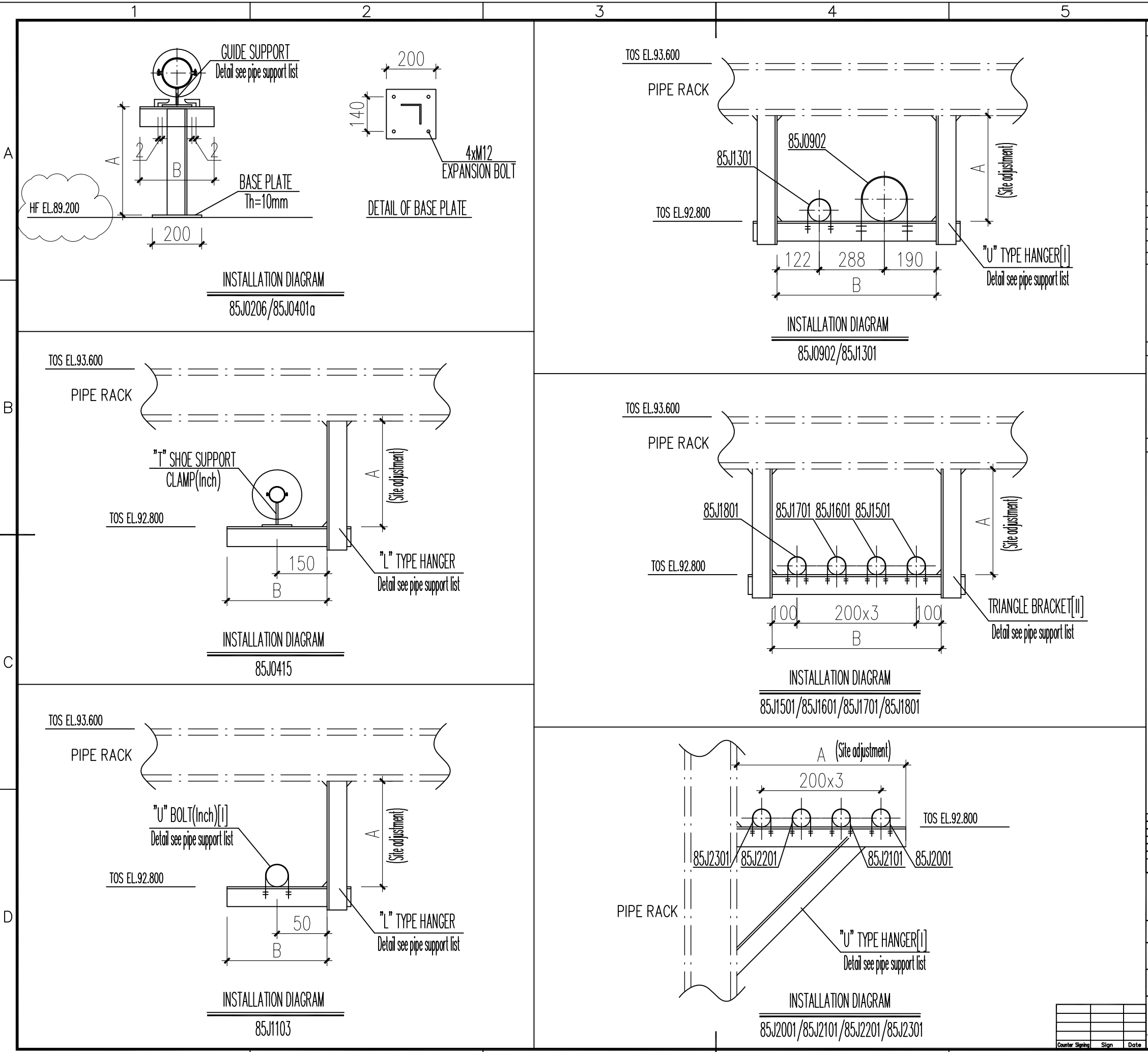
KEY PLAN

Final Issue	29.11.2018	Geng Yanfei	Bai Yang	Ji Ningbo			
Final Issue	06.11.2018	Geng Yanfei	Bai Yang	Ji Ningbo			
Final Issue	14.12.2017	Geng Yanfei	Bai Yang	Ji Ningbo			
Issued For Review	07.11.2017	Geng Yanfei	Bai Yang	Ji Ningbo			
Issued For Review	17.07.2017	Geng Yanfei	Bai Yang	Ji Ningbo			
REV.	DESCRIPTION	DATE	DESIGN	DRAW	CHECK	REVIEW	APPROVE

THIS DOCUMENT IS THE PROPERTY OF TCC. NO PART OF THIS DOCUMENT SHALL BE REPRODUCED OR DISCLOSED TO OTHERS OR USED FOR ANY PURPOSE WHATSOEVER EXCEPT WITH THE PRIOR WRITTEN PERMISSION OF TCC.

OWNER: **Middle East Kimiaye Pars Company**

			CONTRACTOR DRAWING NO. MKP-11-DE-9000-FE-REQ-237 SHEET 20 TOTAL 24
PROJECT Pipe Support List	UNIT Flare	PHASE Detail Engineering	VENDOR DRAWING NO. 17013D8500PED00-13 SHEET 20 TOTAL 24
SCALE 1:15	SHEET 20	TOT. 24	SIZE A3
OWNER Middle East Kimiaye Pars Company	PROJECT MKP Methanol Project	UNIT Flare	PHASE Detail Engineering
DRAWN Center Shiqin	CHECKED Sign	DATE Date	OWNER DWG NO. MKP-VD-8500-237-507-A3



GENERAL NOTES

GENERAL NOTE:
 1. ALL DIMENSIONS ARE IN mm. ALL ELEVATIONS AND COORDINATES ARE IN m.
 2. DELETE.
 3. THE SITE WELDING OF BRACKET AND CML SHALL BE FULLY WELDED AND THE HEIGHT OF WELDING ANGLE SHOULD BE NO LESS THAN THE THICKNESS OF THINNER PART.
 4. AFTER THE BRACKET IS INSTALLED PAINTING IS NEEDED.
 5. FOR STAINLESS PIPE A THICKNESS=0.3mm STAINLESS PLATE SHOULD BE INSTALLED BETWEEN PIPE AND CLAMP OR U BOLT.

REFERENCE DRAWINGS

SYMBOLS AND LEGENDS

KEY PLAN

Final Issue	29.11.2018	Geng Yanfei	Bai Yang	Ji Ningbo			
Final Issue	08.11.2018	Geng Yanfei	Bai Yang	Ji Ningbo			
Final Issue	14.12.2017	Geng Yanfei	Bai Yang	Ji Ningbo			
Issued For Review	07.11.2017	Geng Yanfei	Bai Yang	Ji Ningbo			
Issued For Review	17.07.2017	Geng Yanfei	Bai Yang	Ji Ningbo			
REV	DESCRIPTION	DATE	DESIGN	DRAW	CHECK	REVIEW	APPROVE

THIS DOCUMENT IS THE PROPERTY OF TOC. NO PART OF THIS DOCUMENT SHALL BE REPRODUCED OR DISCLOSED TO OTHERS OR USED FOR ANY PURPOSE WHATSOEVER EXCEPT WITH THE PRIOR WRITTEN PERMISSION OF TOC.

OWNER: Middle East Kimiaye Pars Company

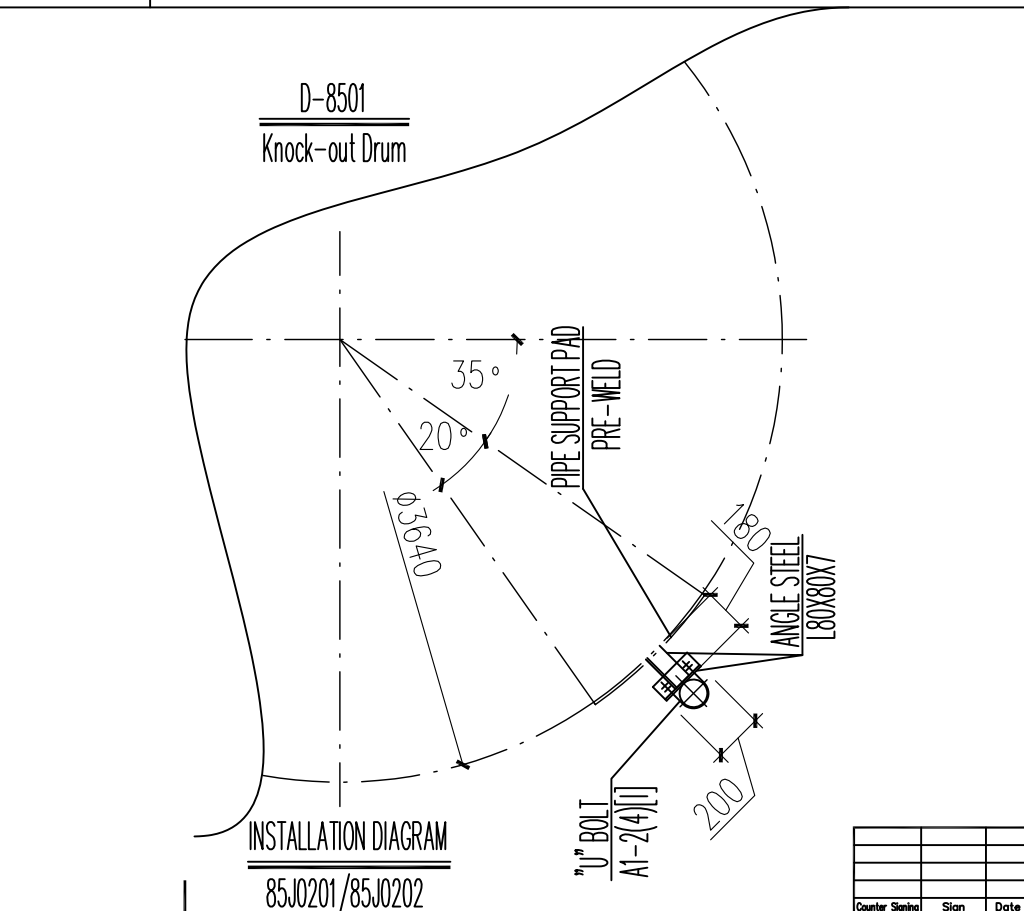
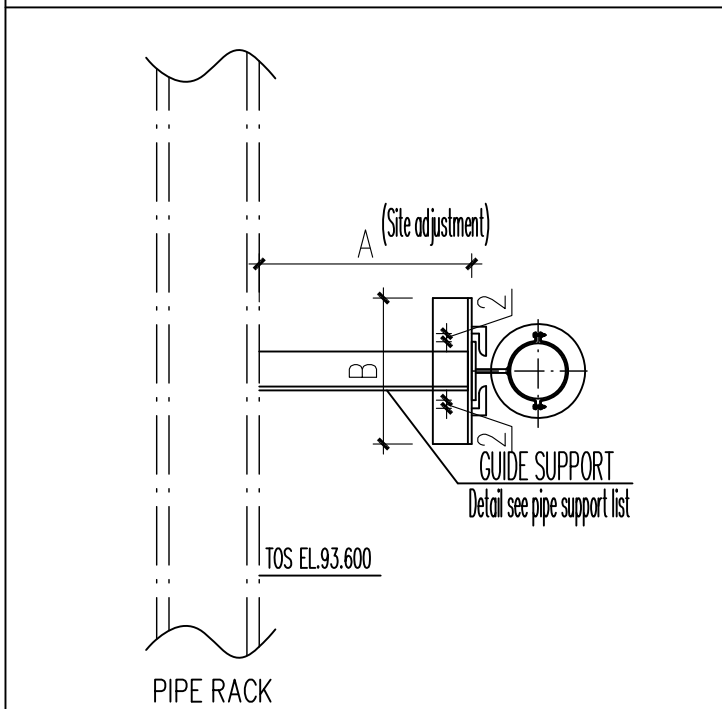
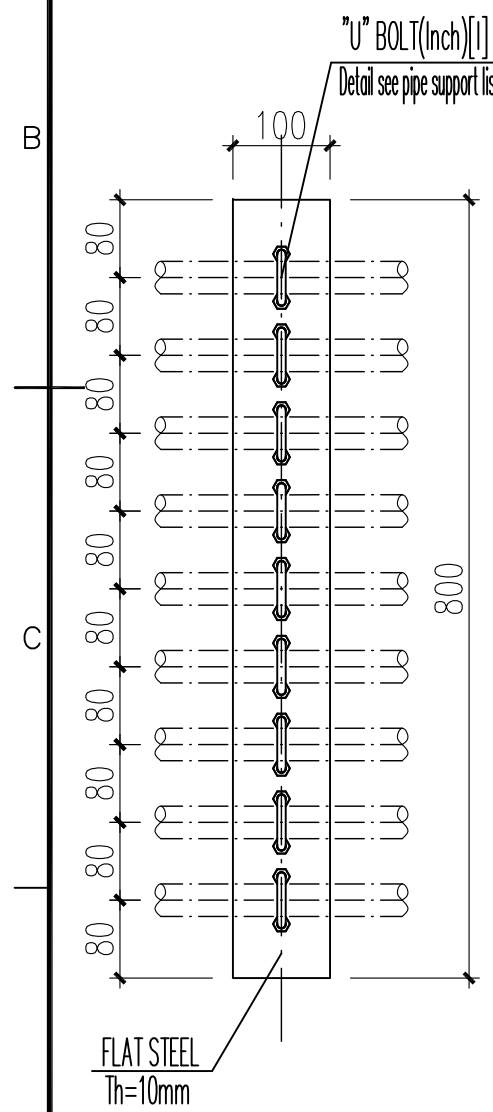
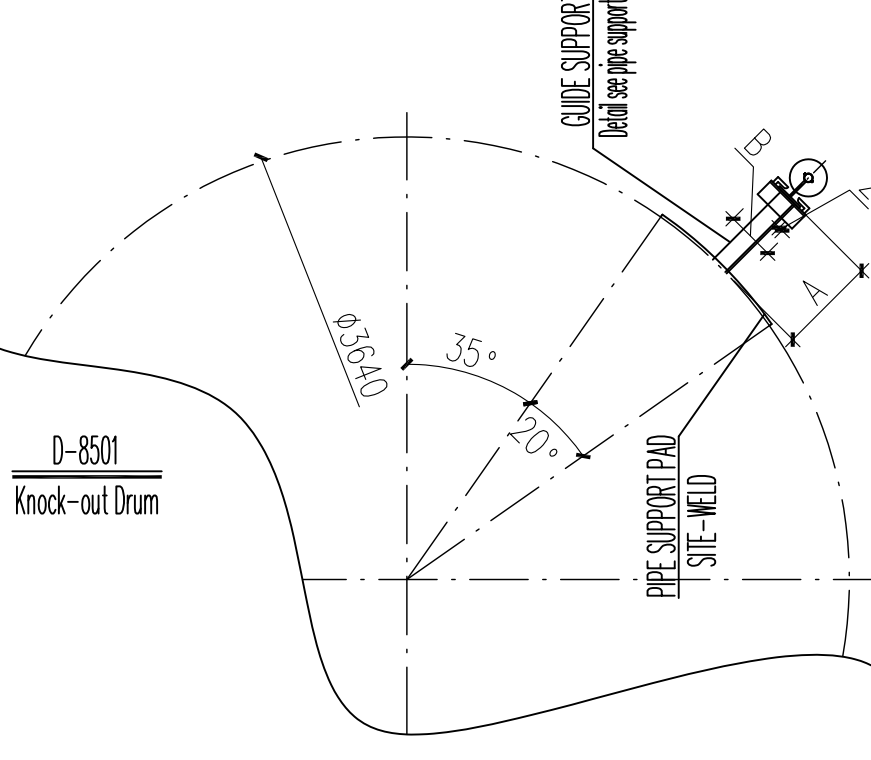
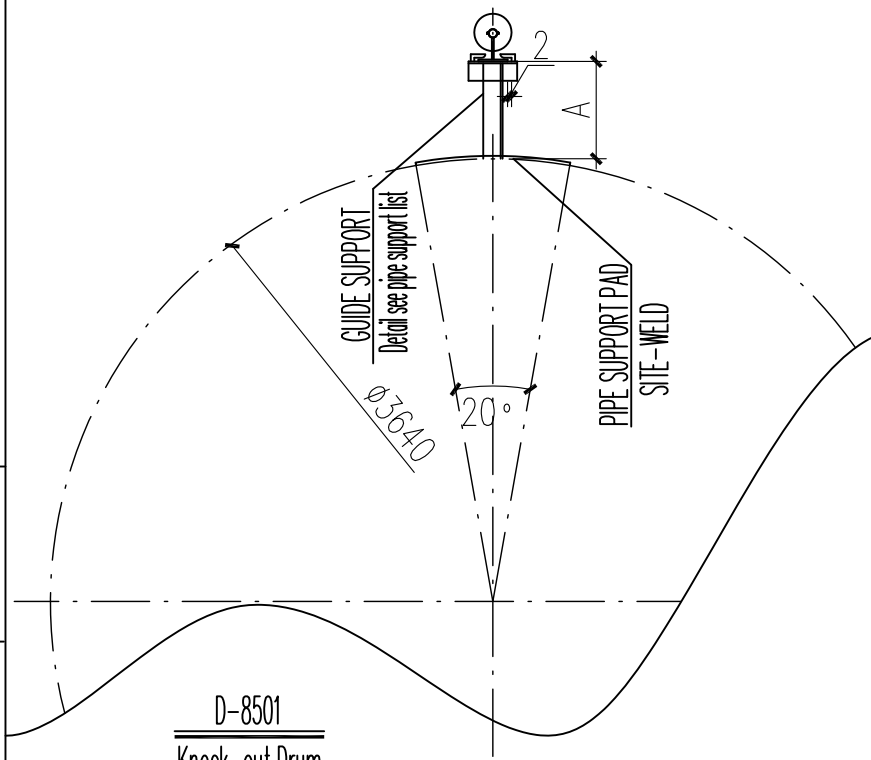
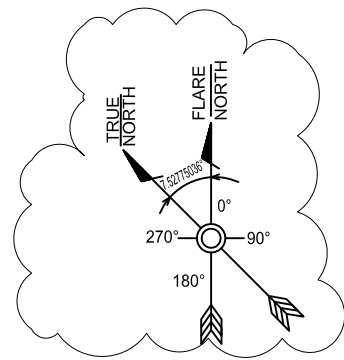
CONTRACTOR: HALDOR TOPSØE A/S

CONTRACTOR: TCC 中国天辰工程技术有限公司 CHINA TIANGHEN ENGINEERING CORPORATION

VENDOR: 江苏中圣高科技产业有限公司 JIANGSU SUNPOWER TECHNOLOGY CO., LTD

PROJECT	MKP Methanol Project
UNIT	Flare
PHASE	Detail Engineering
SCALE	1:15
SHEET	21
TOT.	24
SIZE	A3
OWNER DWS NO.	MKP-VD-8500-237-507-A3

Center	Sign	Date



GENERAL NOTES

- GENERAL NOTE:
 1. ALL DIMENSIONS ARE IN mm. ALL ELEVATIONS AND COORDINATES ARE IN m.
 2. DELETE.
 3. THE SITE WELDING OF BRACKET AND CML SHALL BE FULLY WELDED AND THE HEIGHT OF WELDING ANGLE SHOULD BE NO LESS THAN THE THICKNESS OF THINNER PART.
 4. AFTER THE BRACKET IS INSTALLED PAINTING IS NEEDED.
 5. FOR STAINLESS PIPE A THICKNESS=0.3mm S.S PLATE SHOULD BE INSTALLED BETWEEN PIPE AND CLAMP OR U BOLT.

REFERENCE DRAWINGS

SYMBOLS AND LEGENDS

KEY PLAN

REV.	DESCRIPTION	DATE	DESIGN	DRAW	CHECK	REVIEW	APPROVE
▲	Final Issue	29.11.2018	Geng Yanfei			Bai Yang	Ji Ningbo
▲	Final Issue	06.11.2018	Geng Yanfei			Bai Yang	Ji Ningbo
▲	Final Issue	14.12.2017	Geng Yanfei			Bai Yang	Ji Ningbo
▲	Issued For Review	07.11.2017	Geng Yanfei			Bai Yang	Ji Ningbo
▲	Issued For Review	17.07.2017	Geng Yanfei			Bai Yang	Ji Ningbo

THIS DOCUMENT IS THE PROPERTY OF TCC. NO PART OF THIS DOCUMENT SHALL BE REPRODUCED OR DISCLOSED TO OTHERS OR USED FOR ANY PURPOSE WHATSOEVER EXCEPT WITH THE PRIOR WRITTEN PERMISSION OF TCC.

OWNER: Middle East
Kimiaye Pars Company

HALDOR TOPSØE A/S

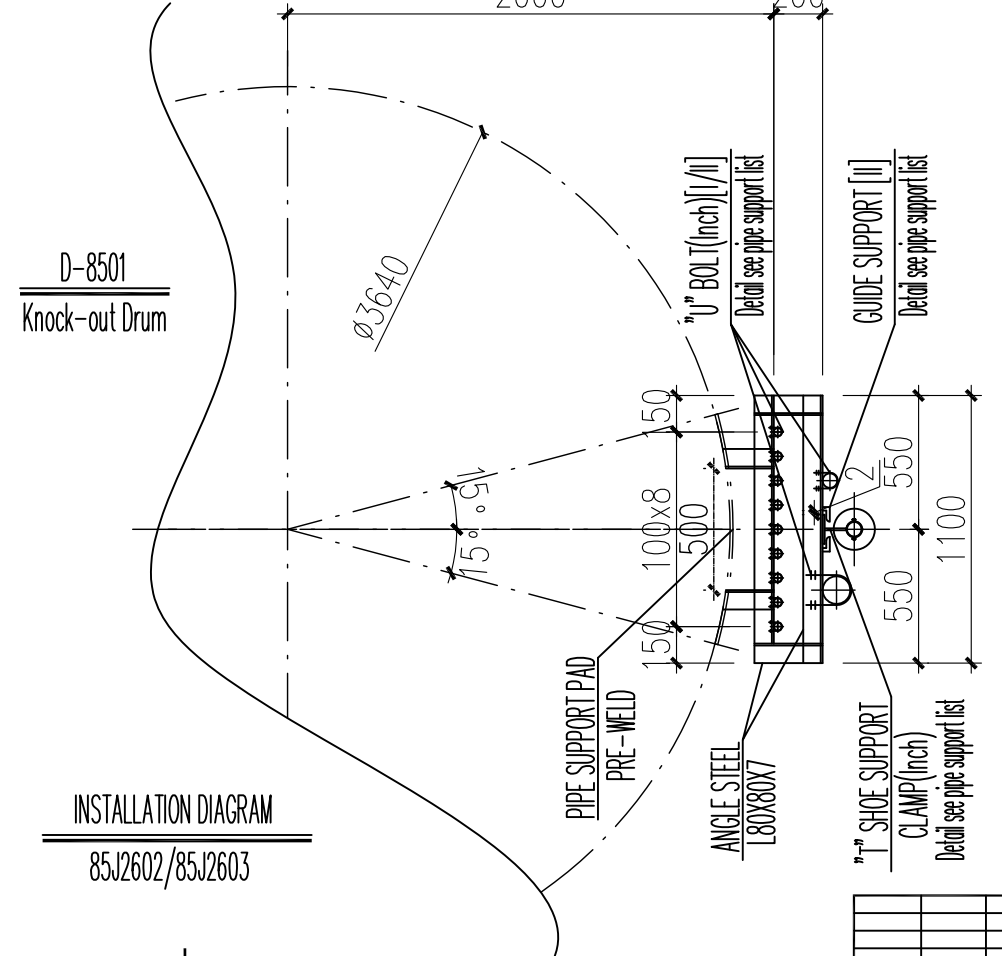
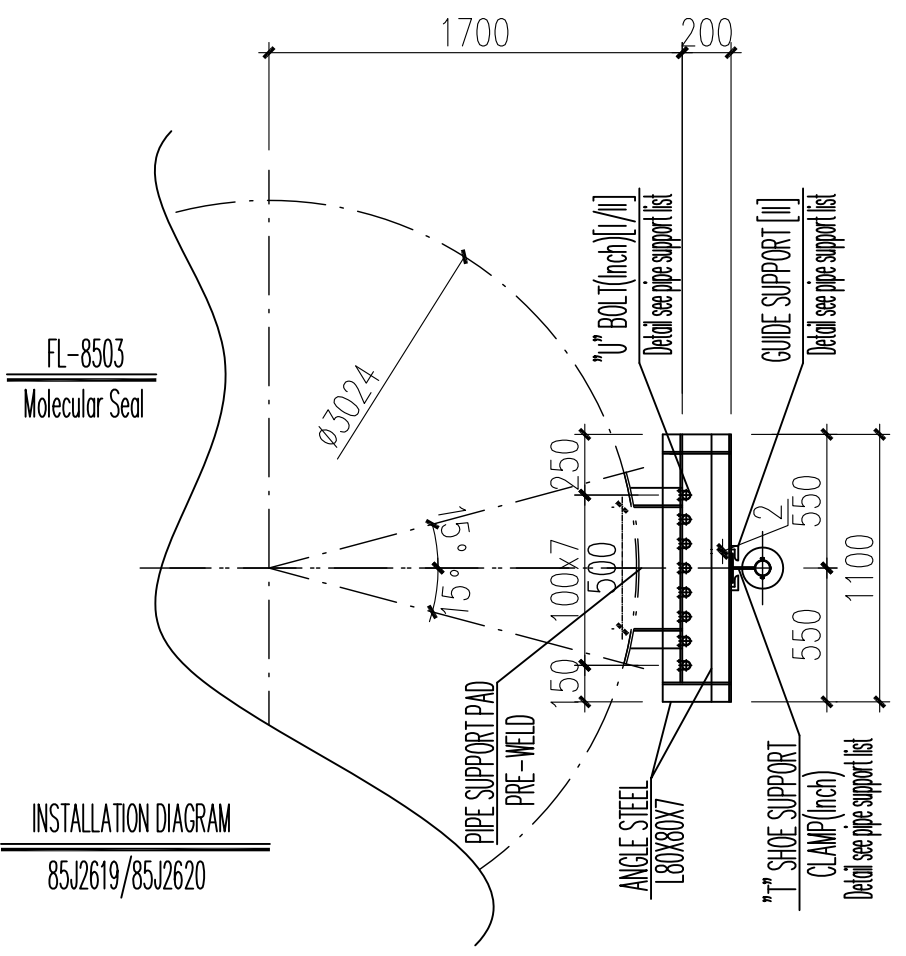
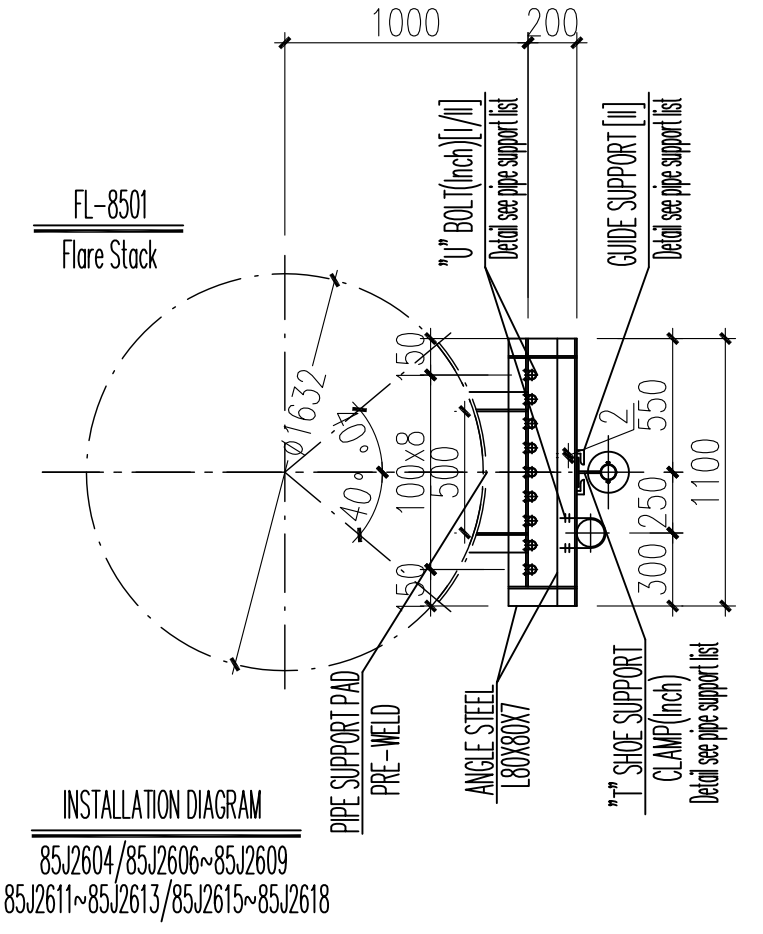
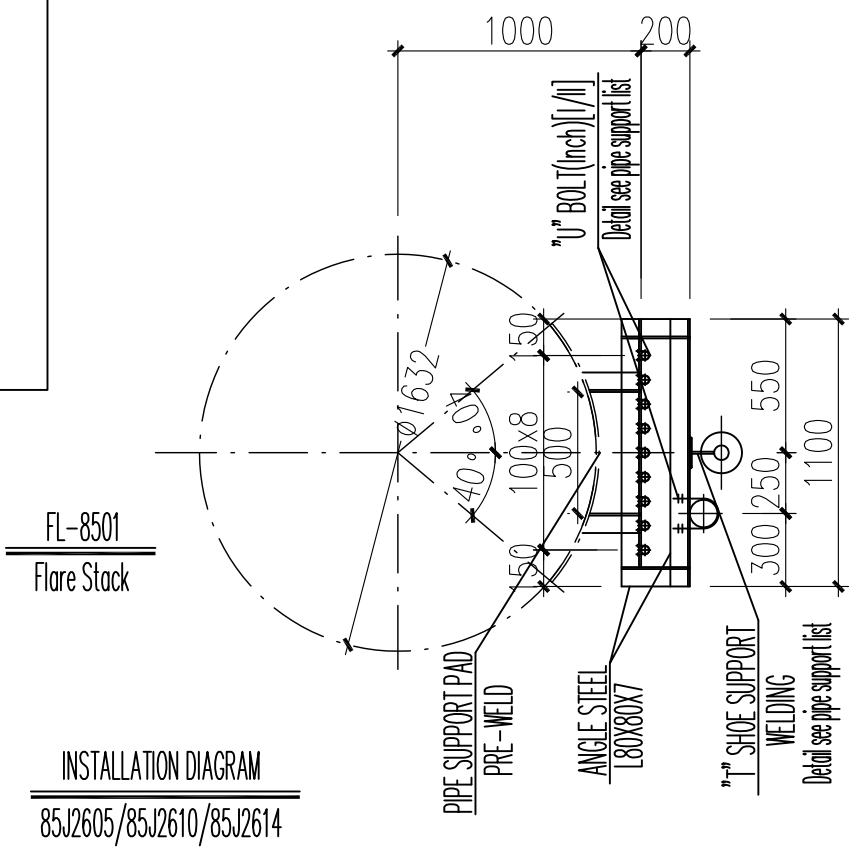
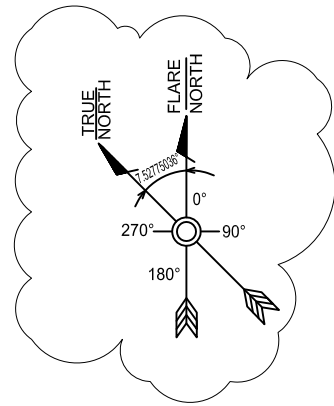
TCC 中国天辰工程技术有限公司
CHINA TIANGHEN ENGINEERING CORPORATION

江苏中圣高科技产业有限公司
JIANGSU SUNPOWER TECHNOLOGY CO., LTD

PROJECT	MKP Methanol Project
UNIT	Flare
PHASE	Detail Engineering
OWNER Dwg. NO.	MKP-YD-8500-237-507-A3

Center	Sign	Date

SCALE 1:15 SHEET 22 TOT. 24 SIZE A3



GENERAL NOTES

- GENERAL NOTE:
 1. ALL DIMENSIONS ARE IN mm. ALL ELEVATIONS AND COORDINATES ARE IN m.
 2. DELETE.
 3. THE SITE WELDING OF BRACKET AND CML SHALL BE FULLY WELDED AND THE HEIGHT OF WELDING ANGLE SHOULD BE NO LESS THAN THE THICKNESS OF THINNER PART.
 4. AFTER THE BRACKET IS INSTALLED PAINTING IS NEEDED.
 5. FOR STAINLESS PIPE A THICKNESS=0.3mm S.S PLATE SHOULD BE INSTALLED BETWEEN PIPE AND CLAMP OR U BOLT.

REFERENCE DRAWINGS

SYMBOLS AND LEGENDS

KEY PLAN

Final Issue	29.11.2018	Geng Yanfei	Bai Yang	Ji Ningbo			
Final Issue	06.11.2018	Geng Yanfei	Bai Yang	Ji Ningbo			
Final Issue	14.12.2017	Geng Yanfei	Bai Yang	Ji Ningbo			
Issued For Review	07.11.2017	Geng Yanfei	Bai Yang	Ji Ningbo			
Issued For Review	17.07.2017	Geng Yanfei	Bai Yang	Ji Ningbo			
REV	DESCRIPTION	DATE	DESIGN	DRAW	CHECK	REVIEW	APPROVE

THIS DOCUMENT IS THE PROPERTY OF TCC. NO PART OF THIS DOCUMENT SHALL BE REPRODUCED OR DISCLOSED TO OTHERS OR USED FOR ANY PURPOSE WHATSOEVER EXCEPT WITH THE PRIOR WRITTEN PERMISSION OF TCC.

OWNER: Middle East Kimiaye Pars Company

中国天辰工程技术有限公司 CHINA TIANCHEN ENGINEERING CORPORATION		CONTRACTOR DRAWING NO. MKP-11-DE-9000-FE-REQ-237 SHEET 23 TOTAL 24
江苏中圣高科技产业有限公司 JIANGSU SUNPOWER TECHNOLOGY CO., LTD		VENDOR DRAWING NO. 17013D8500PE00-13 SHEET 23 TOTAL 24

PROJECT	MKP Methanol Project
UNIT	Flare
PHASE	Detail Engineering
OWNER Dwg. NO.	MKP-VD-8500-237-507-A3

Center	Sign	Date

SCALE 1:15 SHEET 23 TOT. 24 SIZE A3

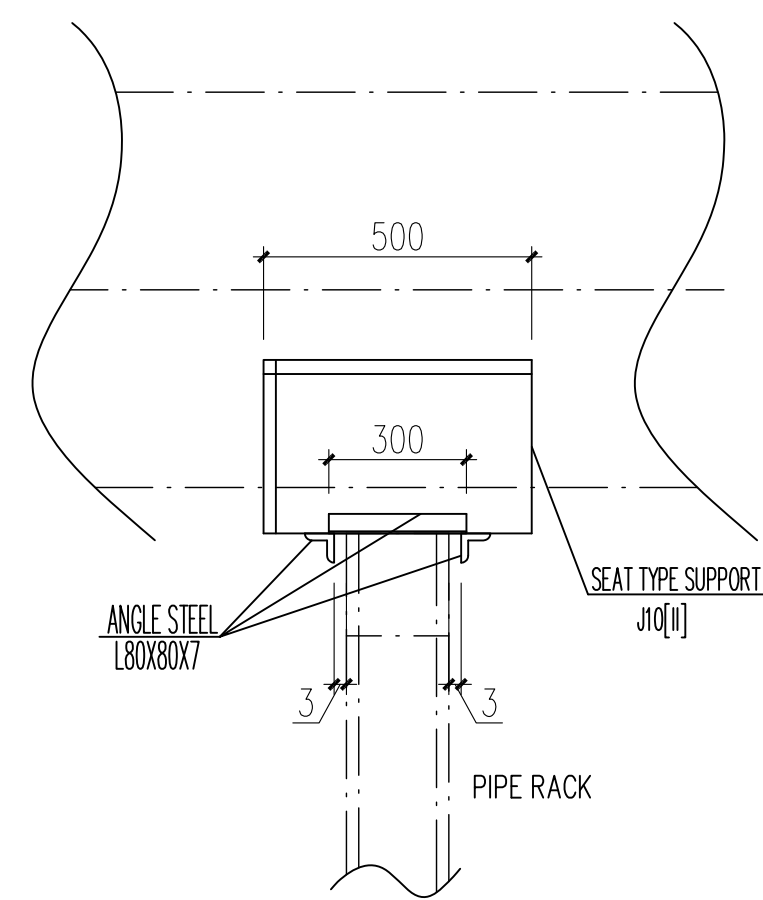
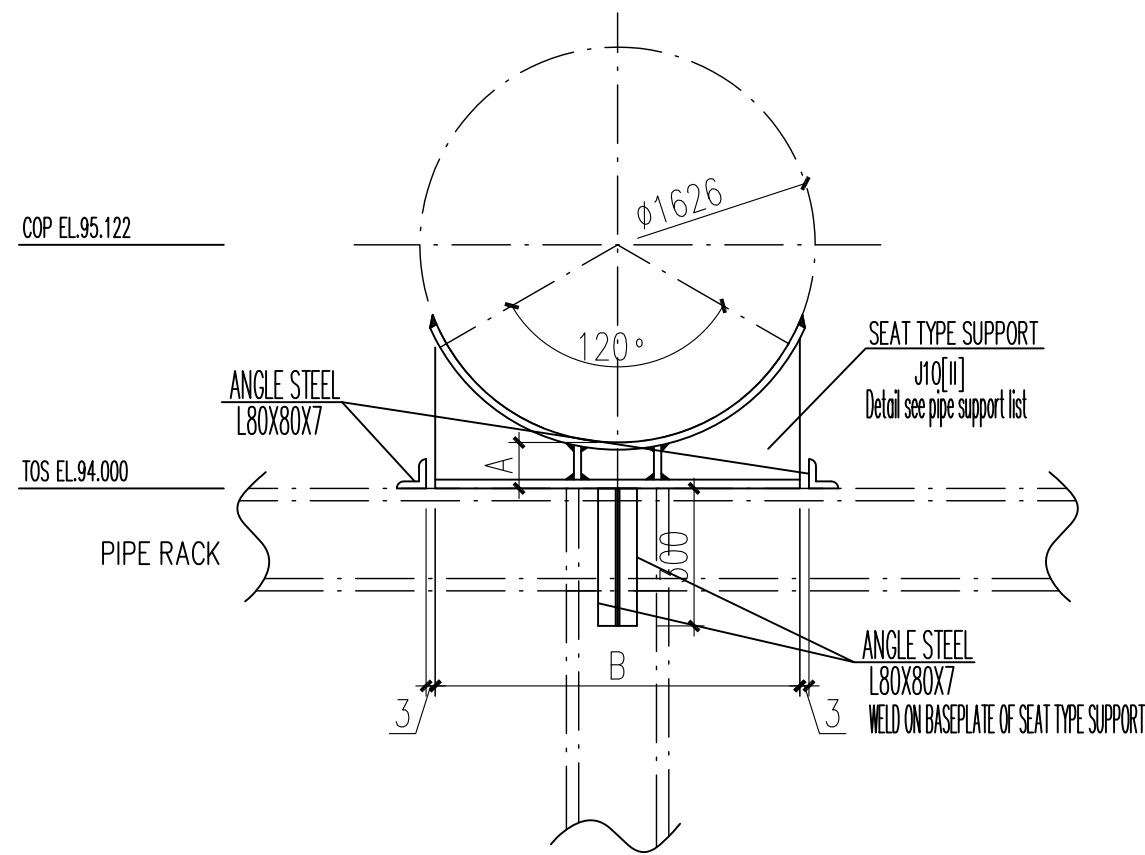
1 2 3 4 5 6

A

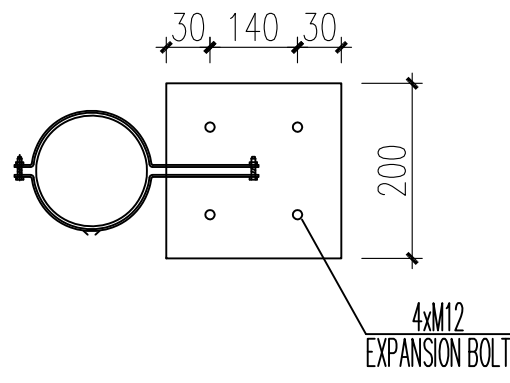
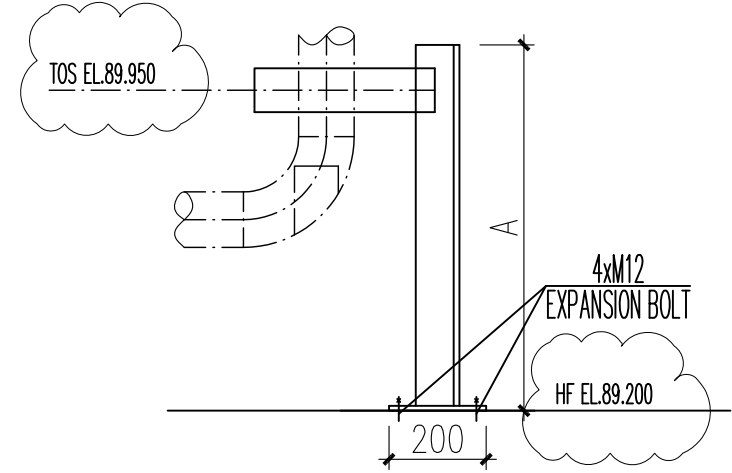
B

C

D



INSTALLATION DIAGRAM
85J0101



INSTALLATION DIAGRAM
85J0205

GENERAL NOTES

- GENERAL NOTE:
 1. ALL DIMENSIONS ARE IN mm. ALL ELEVATIONS AND COORDINATES ARE IN m.
 2. DELETE.
 3. THE SITE WELDING OF BRACKET AND CML SHALL BE FULLY WELDED AND THE HEIGHT OF WELDING ANGLE SHOULD BE NO LESS THAN THE THICKNESS OF THINNER PART.
 4. AFTER THE BRACKET IS INSTALLED PAINTING IS NEEDED.
 5. FOR STAINLESS PIPE A THICKNESS=0.3mm STAINLESS PLATE SHOULD BE INSTALLED BETWEEN PIPE AND CLAMP OR U BOLT.
 6. FOR SEAT TYPE SUPPORT THE DISCONTINUOUS ARC WELDING BETWEEN THE ARC PLATE AND THE PIPE OF THE SLIDING TUBE IS 100mm AND THE FIXED PIPE BRACKET IS FULL WELDED.

REFERENCE DRAWINGS

SYMBOLS AND LEGENDS

KEY PLAN

Final Issue	29.11.2018	Geng Yanfei	Bai Yong	Ji Ningbo			
Final Issue	06.11.2018	Geng Yanfei	Bai Yong	Ji Ningbo			
Final Issue	14.12.2017	Geng Yanfei	Bai Yong	Ji Ningbo			
Issued For Review	07.11.2017	Geng Yanfei	Bai Yong	Ji Ningbo			
Issued For Review	17.07.2017	Geng Yanfei	Bai Yong	Ji Ningbo			
REV	DESCRIPTION	DATE	DESIGN	DRAW	CHECK	REVIEW	APPROVE

THIS DOCUMENT IS THE PROPERTY OF TCC. NO PART OF THIS DOCUMENT SHALL BE REPRODUCED OR DISCLOSED TO OTHERS OR USED FOR ANY PURPOSE WHATSOEVER EXCEPT WITH THE PRIOR WRITTEN PERMISSION OF TCC.

OWNER:
 Middle East
 Kimiaye Pars Company

HALDOR TOPSØE A/S

TCC 中国天辰工程技术有限公司
 CHINA TIANCHEN ENGINEERING CORPORATION

江苏中圣高科技产业有限公司
 JIANGSU SUNPOWER TECHNOLOGY CO., LTD

CONTRACTOR	CONTRACTOR DRAWING NO.	MKP-11-DE-9000-FE-REQ-237
	SHEET	24 TOTAL 24
VENDOR	VENDOR DRAWING NO.	17013D8500PED0-13
	SHEET	24 TOTAL 24
PROJECT	MKP Methanol Project	
UNIT	Flare	
PHASE	Detail Engineering	
SCALE	1:15	
SHEET	24	TOT. 24
SIZE	A3	
OWNER DWS NO.	MKP-VD-8500-237-507-A3	

Counter	Sign	Date

1 2 3 4 5 6