


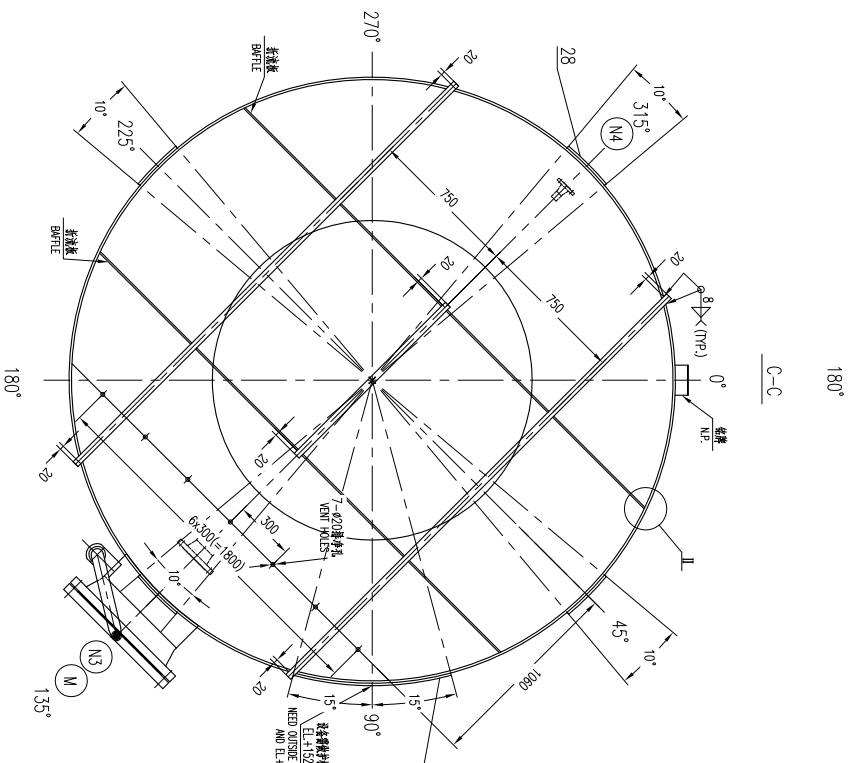
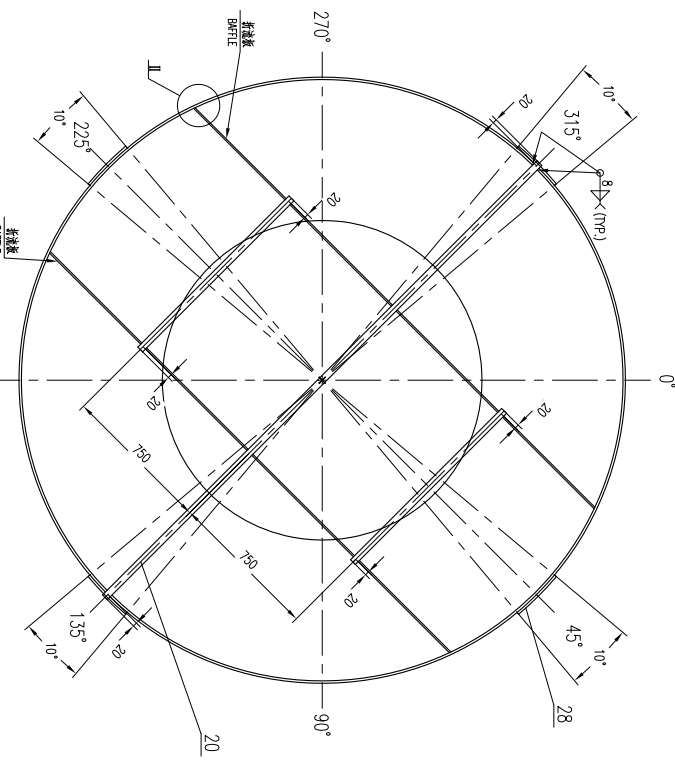
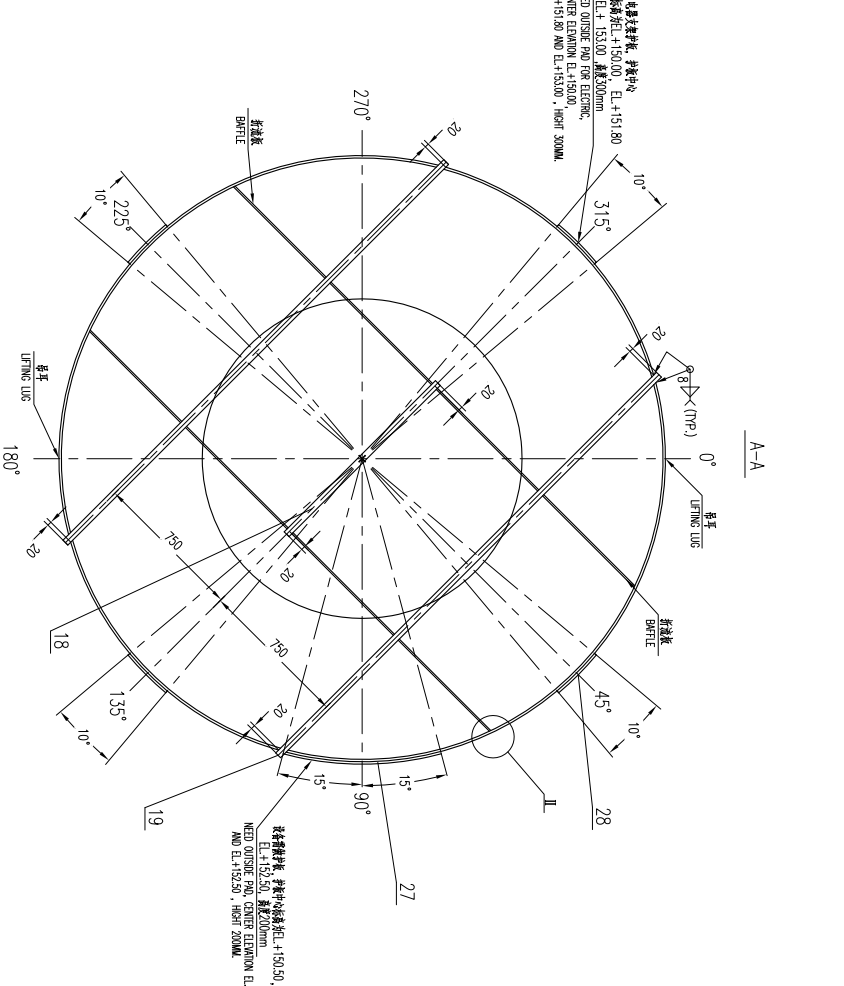
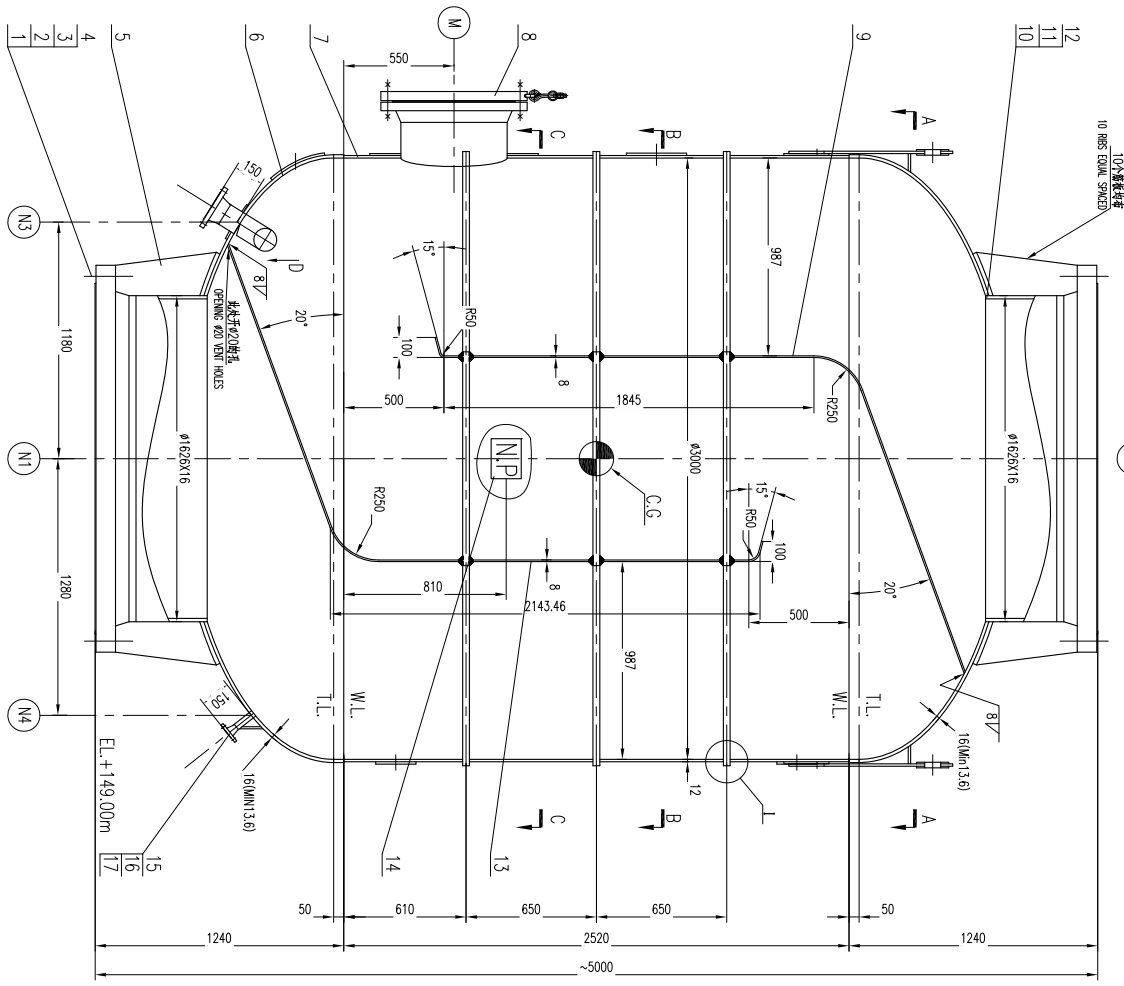
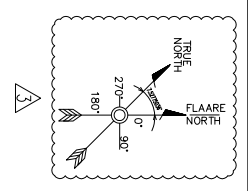


Contractor:  TIANCHEN CORP. CHINA	Project :	MKP Methanol Project			Owner :  شرکت کیمیای پارس خاورمیانه Middle East Kemiya Pars Co.
	Unit :	Flare	Phase	Detail Engineering	
	Doc. Title :	Molecular Seal Drawing			
Vendor:  SUNPOWER GROUP LTD.	Owner No. :	MKP-VD-8500-237-308-A1			
	Contr. No.:	MKP-11-DE-9000-FE-REQ-237			
	Vendor No.	17013D85000EQ02			
				Rev. :3	Page : 1 of 8

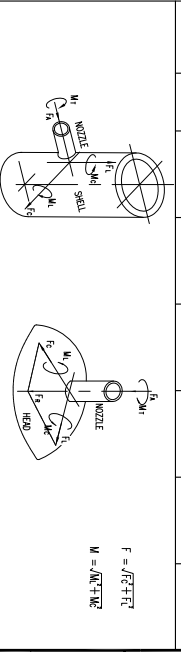
Molecular Seal Drawing

3	30.11.2018	Final Issue	Tu Qiang	Fu Chun Ding	Liu Hai Ying	
2	2.11.2018	Final Issue	Tu Qiang	Fu Chun Ding	Liu Hai Ying	
1	28.02.2018	Final Issue	Tu Qiang	Fu Chun Ding	Liu Hai Ying	
0	17.11.2017	Final Issue	Tu Qiang	Fu Chun Ding	Liu Hai Ying	
C	20.09.2017	Issued For Approval	Tu Qiang	Fu Chun Ding	Liu Hai Ying	
A	22.08.2017	Issued For Approval	Tu Qiang	Fu Chun Ding	Liu Hai Ying	
REV.	DATE	PURPOSE OF ISSUE	PREPARE	CHECK	REVIEW	APPROVE



NOZZLE	DN	F _A (KN)	F _L (KN)	F _{C/F} (KN)	M _A (KN·m)	M _L (KN·m)	M _{C/M} (KN·m)
N3	4"	6.3	6.3	4.7 / 7.98	2.1	1.8	1.4 / 2.28

NOZZLE LOADS DATA	Counter Signing	Sign	Date



设计数据		DESIGN DATA
设计标准	DESIGN CODE	REFERENCES TO 'ASME CODE SECTION DIV. 1, 2015' ED.
设计压力	DESIGN PRESSURE	5 bar(g)
设计温度	DESIGN TEMP.	410 °C
工作压力	WORKING PRESSURE	0.41 bar(g)
工作温度	WORKING TEMP.	354/410 °C
操作温度	OPERATING TEMP.	-10 °C At bar(g)
最大允许工作压力	MAXIMUM ALLOWABLE WORKING PRESSURE (MAWP)	5 At 410 bar(g) AT 7.79 LIMITED BY SHELL
试验压力	TEST PRESSURE	7.48 bar(g)
试验温度	TEST TEMP.	7-48 °C
气密性试验压力	LEAKAGE TEST PRESS.	NONE
腐蚀裕量	CORROSION ALLOWANCE	0 mm
使用寿命	SERVICE LIFE	20 year
容积	CAPACITY	28.44 m³
材料	RT (A.S.C.)	SP01 (220) / SEE NOTE 11)
焊缝接头系数	JOINT EFFICIENCY	0.85 / 1
焊缝系数	WELDING	N/A
应力	STRESS RELIEVING	YES (FOR HEAD)
冲击试验	IMPACT TEST	EQUIPPED
基本风速	BASIC WIND SPEED	200.3 km/h
风荷载	WIND LOAD	ASCE 7-2010 Terrain Surface Roughness B; 1: Flat unobstructed coastal areas; Importance Factor 1; Type of Surface: Smooth; Basic Wind Speed: 115.5 km/h (ASCE 7-2010 Table 6-5.1); Exposure Category: B; Wind Directionality Factor: 1.0; Gust Effect Factor: 1.0; Topographic Factor: 1.0; Directionality Factor: 1.0; Exposure Category: B; Wind Directionality Factor: 1.0; Gust Effect Factor: 1.0; Topographic Factor: 1.0; Directionality Factor: 1.0
抗震荷载	SEISMIC LOAD	NONE
保温厚度	INSULATION THK.	NONE
防火厚度	FIREPROOF THK.	NONE
油漆及表面处理	PAINTING & SURFACE PREPARATION	WP-11-BE-3000-PE-SP-C-010
包装及运输要求	PACKING & SHIPPING REQUIREMENT	WP-11-BE-3000-FE-SP-C-001 & NOTE 15
制造重量	FABRICATION WEIGHT	8800 kg
吊装重量	LIFTING WEIGHT	8800 kg
设备空重	EMPTY WEIGHT	8800 kg
操作重量	OPERATING WEIGHT	kg
水压试验重量	HYDROSTATIC TEST WEIGHT	kg
管口方位	NOZZLE ORIENTATION	PER THIS DRAWING

接管表		NOZZLE SCHEDULE
接管号	规格	接管名称
NOZZLE NO.	SPEC.	NOZZLE SCHEDULE
N1	1-16 EN 1092-1: 2013 PN 16 11 B1	FLARE GAS INLET
N2	1-16 EN 1092-1: 2013 PN 16 11 B1	FLARE GAS OUTLET
N3	1-16 EN 1092-1: 2013 PN 16 11 B1	DRUM OUTLET
N4	1-20 EN 1092-1: 2013 PN 20 11 B1	FLARE GAS INLET
N5	1-20 EN 1092-1: 2013 PN 20 11 B1	FLARE GAS INLET

REV.	PURPOSE OF ISSUE	DATE	DESIGN	DRAW	CHECK	REVIEW	APPROVE
1	Final Issue	11.30.2018	Q.TU	CD.FU	HY.LIU	HY.LIU	HY.LIU
2	Final Issue	11.2.2018	Q.TU	CD.FU	HY.LIU	HY.LIU	HY.LIU
3	Final Issue	2.28.2018	Q.TU	CD.FU	HY.LIU	HY.LIU	HY.LIU
4	Final Issue	11.17.2017	Q.TU	CD.FU	HY.LIU	HY.LIU	HY.LIU
5	Final Issue	9.20.2017	Q.TU	CD.FU	HY.LIU	HY.LIU	HY.LIU
6	Issued For Approval	8.22.2017	Q.TU	CD.FU	HY.LIU	HY.LIU	HY.LIU

OWNER: Middle East
Kimiyae Pars Company

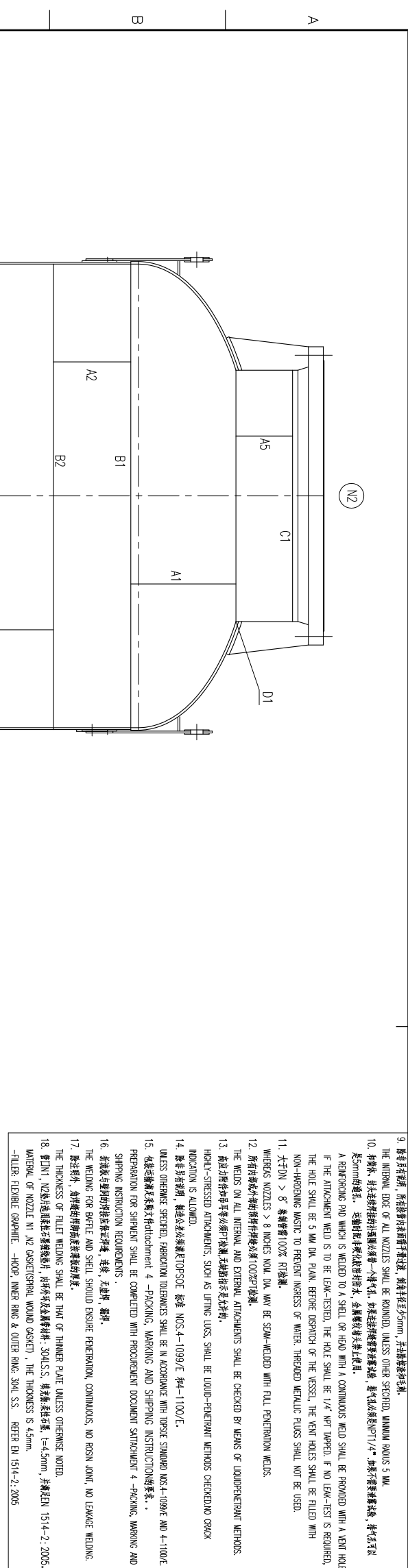
LEISOR: HALDOR TOPSOE A/S

CONTRACTOR: TCC 中国天辰工程有限公司
CHINA TIANCHEN ENGINEERING CORPORATION

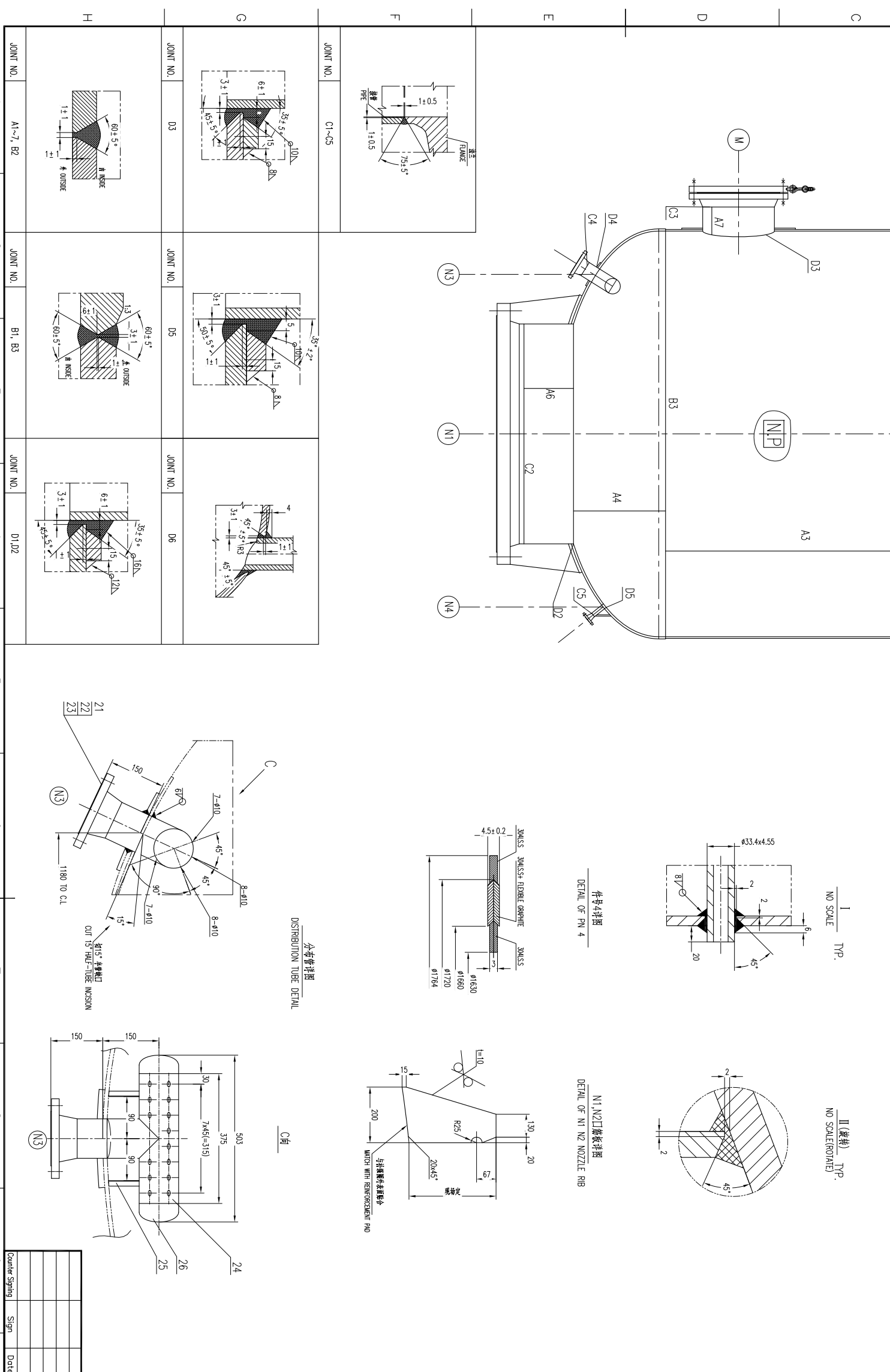
VENDOR: 江苏中圣高科技股份有限公司
JIANGSU SHENGWANG TECHNOLOGY CO., LTD

CONTRACTOR DRAWING NO.	VENDOR DRAWING NO.	SHEET	TOTAL
MP-11-DE-9000-FE-RCQ-237	17013085000202-01	1	7

SCALE: 1:18 SHEET 1 TOT. 1 SIZE A1
PROJECT: MOLECULAR SEAL GENERAL ARRANGEMENT DRAWING
UNIT: Metric
PHASE: Detail Engineering
OWNER: MPP
DWG NO.: MP-10-8500-237-308-A1



NO	DESCRIPTION	QTY	UNIT	WEIGHT (KG)	REMARKS
29	1701308000E02-05	2	FLANGE ASS'Y	36.6	73.2
28	SEE DWG.	12	SA-240 304L	6.3	75.6
27	SEE DWG.	2	SA-240 304L	12.6	25.2
26	ASME B1.63-2012	2	SA-403 WP304L	1.5	3.0
25	ASME B1.63-2012	2	SA-240 304L	0.5	1.0
24	SEE DWG.	1	SA-312 TP304L	6.3	
23	ASME B1.65-2013	1	SA-240 304L	1.7	
22	ASME B1.65-2013	1	SA-182 TP304L	1.5	
21	ASME B1.65-2013	1	SA-312 TP304L	1.5	
20	ASME B1.65-2013	1	SA-312 TP304L	10	LA 3094
19	ASME B1.65-2013	4	SA-312 TP304L	3.5	LA 1066
18	ASME B1.65-2013	4	SA-312 TP304L	8.8	LA 2088
17	ASME B1.65-2013	2	SA-240 304L	0.2	0.4
16	ASME B1.65-2013	1	SA-182 TP304L	1.14	N4
15	ASME B1.65-2013	1	SA-312 TP304L	0.5	N4
14	ASME B1.65-2013	1	SA-312 TP304L	3.45	
13	ASME B1.65-2013	1	SA-240 304L	4.14	
12	ASME B1.65-2013	2	SA-240 304L	218	436
11	EN 1092-1: 2013	2	SA-182 TP304L	476	952
10	ASME B1.65-2013	2	SA-240 304L	234	468
9	ASME B1.65-2013	1	SA-240 304L	414	
8	ASME B1.65-2013	1	SA-240 304L	317	
7	ASME B1.65-2013	1	SA-240 304L	2261	
6	ASME B1.65-2013	2	SA-240 304L	1247.2	2494.4
5	SEE DETAIL DWG.	20	SA-240 304L	6.0	12
4	SEE DETAIL DWG.	2	SEE NOTE 18		N1,N2
3	ISO 7069:2000(E)	160	300HW	0.93	148.8
2	DN 2510-5	80	1.1181	0.93	74.4
1	DN 2510-1	80	1.2718	6.5	520



REV	DATE	DESCRIPTION	BY	CHKD	APP'D
1	11.30.2018	Final Issue	HYLU	HYLU	HYLU
2	11.2.2018	Final Issue	HYLU	HYLU	HYLU
3	2.28.2018	Final Issue	HYLU	HYLU	HYLU
4	11.17.2017	Final Issue	HYLU	HYLU	HYLU
5	9.20.2017	Final Issue	HYLU	HYLU	HYLU
6	8.22.2017	Final Issue	HYLU	HYLU	HYLU

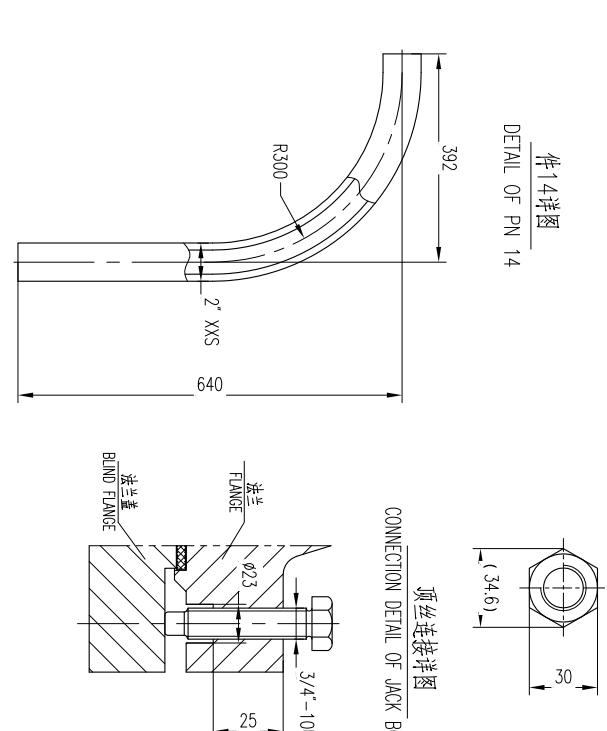
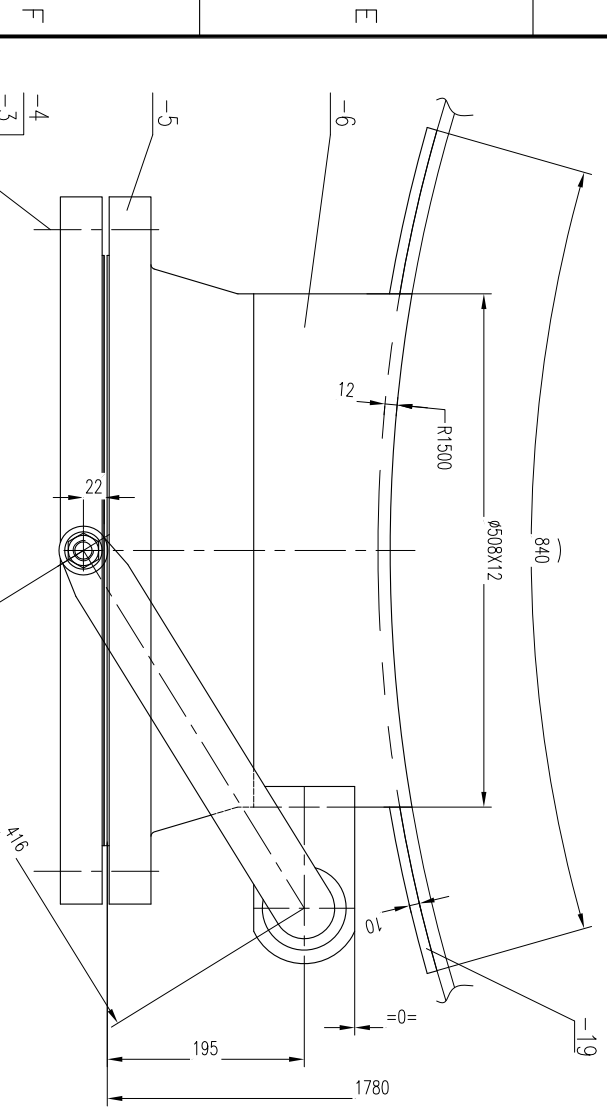
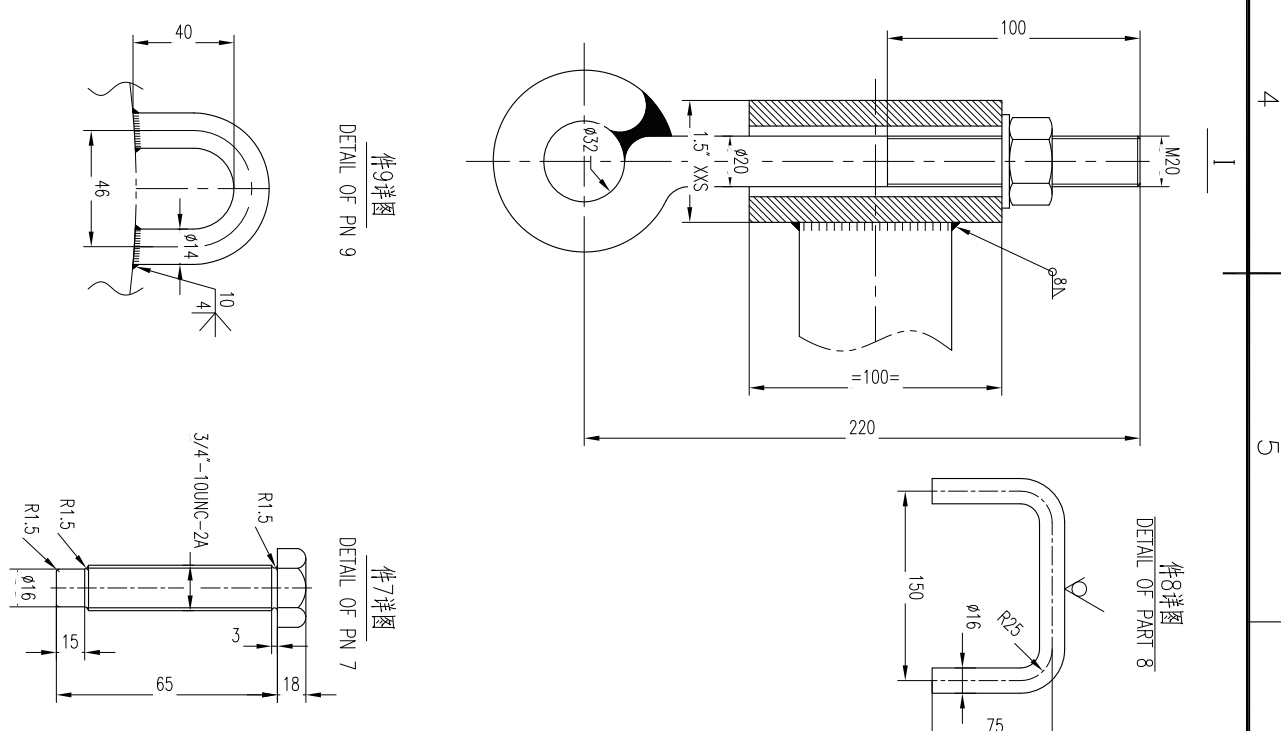
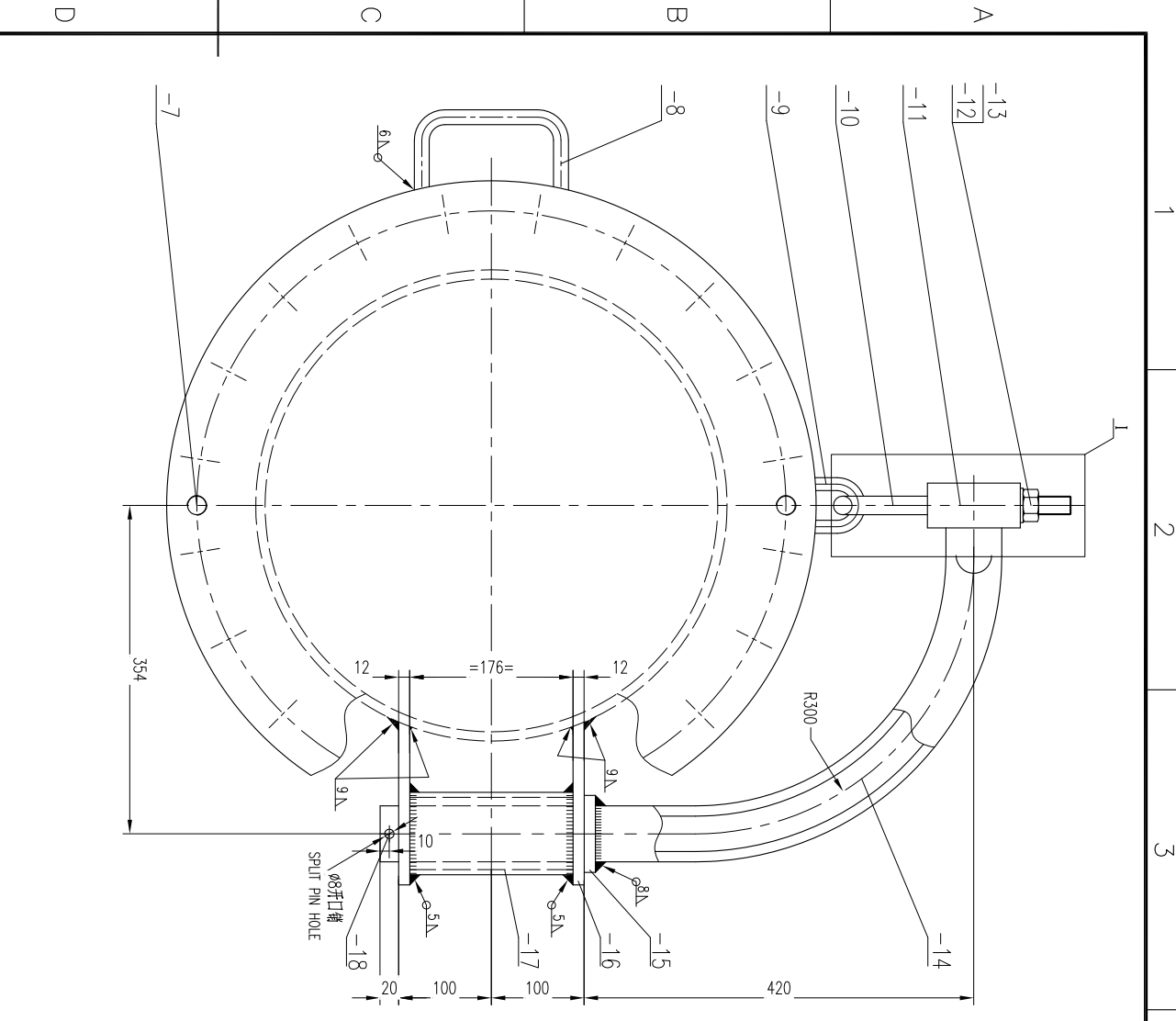
NO	DESCRIPTION	QTY	UNIT	WEIGHT (KG)	REMARKS
29	1701308000E02-05	2	FLANGE ASS'Y	36.6	73.2
28	SEE DWG.	12	SA-240 304L	6.3	75.6
27	SEE DWG.	2	SA-240 304L	12.6	25.2
26	ASME B1.63-2012	2	SA-403 WP304L	1.5	3.0
25	ASME B1.63-2012	2	SA-240 304L	0.5	1.0
24	SEE DWG.	1	SA-312 TP304L	6.3	
23	ASME B1.65-2013	1	SA-240 304L	1.7	
22	ASME B1.65-2013	1	SA-182 TP304L	1.5	
21	ASME B1.65-2013	1	SA-312 TP304L	1.5	
20	ASME B1.65-2013	1	SA-312 TP304L	10	LA 3094
19	ASME B1.65-2013	4	SA-312 TP304L	3.5	LA 1066
18	ASME B1.65-2013	4	SA-312 TP304L	8.8	LA 2088
17	ASME B1.65-2013	2	SA-240 304L	0.2	0.4
16	ASME B1.65-2013	1	SA-182 TP304L	1.14	N4
15	ASME B1.65-2013	1	SA-312 TP304L	0.5	N4
14	ASME B1.65-2013	1	SA-312 TP304L	3.45	
13	ASME B1.65-2013	1	SA-240 304L	4.14	
12	ASME B1.65-2013	2	SA-240 304L	218	436
11	EN 1092-1: 2013	2	SA-182 TP304L	476	952
10	ASME B1.65-2013	2	SA-240 304L	234	468
9	ASME B1.65-2013	1	SA-240 304L	414	
8	ASME B1.65-2013	1	SA-240 304L	317	
7	ASME B1.65-2013	1	SA-240 304L	2261	
6	ASME B1.65-2013	2	SA-240 304L	1247.2	2494.4
5	SEE DETAIL DWG.	20	SA-240 304L	6.0	12
4	SEE DETAIL DWG.	2	SEE NOTE 18		N1,N2
3	ISO 7069:2000(E)	160	300HW	0.93	148.8
2	DN 2510-5	80	1.1181	0.93	74.4
1	DN 2510-1	80	1.2718	6.5	520

技术要求 GENERAL NOTES

12.5
OTHERS

1. 人孔盖的开启方向按总布置图。
DIRECTION OF HINGE SHALL BE REFERRED TO GENERAL ARRANGEMENT DRAWING.
2. 所有锐角倒钝。
ALL THE SHARP ANGLE SHALL BE GROUND SMOOTH.
3. 垫片选用柔性石墨缠绕垫片, 内外环及金属密封材料: 304L S.S. 柔性石墨垫片: t=4.5mm. MATERIAL OF GASKET (SPIRAL WOUND GASKET), THE THICKNESS IS 4.5mm.

-FILLER: FLEXIBLE GRAPHITE -HOOP: INNER RING & OUTER RING: 304L S.S.



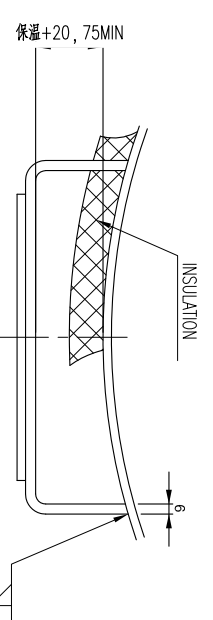
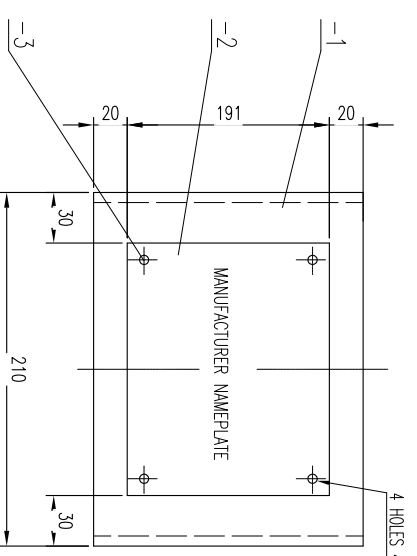
序号	图号或标准号	名称	材料	数量	材料	质量 (kg)	比例	所在图号	装配图号	备注
1	ASME B16.5-2013	法兰盖 20" CL.150 BL. RF	SA-182 F304L	1	SA-182 F304L	128.5	1:1	7/013085000E002-03/7013085000E002-02		
2	ASME B18.31.2-2014	全螺纹螺栓 1-1/8"-8UN-2A L=165	SA-193 G.A.87	20	SA-193 G.A.87	0.83				
3	ASME B18.2.2-2015	重螺帽 1-1/8"-8UN-2B	SA-194 G.A.2H	40	SA-194 G.A.2H	0.23				
4	ASME B16.20-2012	缠绕垫片 20" CL.150 RF t=4.5	SEE NOTE 4	1		89.5				
5	ASME B16.5-2013	法兰 20" CL.150 WN RF B=484	SA-182 F304L	1	SA-182 F304L					
6	ASME B16.5-2013	壳牌 0508x12	SA-240 304L	1	SA-240 304L	24				
7	SEE DETAIL DWG	项丝 3/4"-10UNC-2A L=65	304 S.S.	2	304 S.S.	0.47				
8	SEE DETAIL DWG	螺母 M20	SA-36	1	SA-36	0.9				
9	SEE DETAIL DWG	垫圈 1/4"	SA-36	1	SA-36	0.12				
10	SEE DETAIL DWG	垫圈 1.5" XXS	SA-106 G.A.B	1	SA-106 G.A.B	11.5				
11	SEE DETAIL DWG	垫圈 2"	SA-106 G.A.B	1	SA-106 G.A.B	0.014				
12	ASME B18.2.4M-2010	垫圈 M20	SA-194 G.A.2H	1	SA-194 G.A.2H	0.06				
13	ASME B18.2.4M-2010	垫圈 M20	SA-194 G.A.2H	1	SA-194 G.A.2H	0.06				
14	SEE DETAIL DWG	垫圈 2" XXS	SA-106 G.A.B	1	SA-106 G.A.B	11.5				
15	SEE DETAIL DWG	垫圈 7" XXS	SA-106 G.A.B	1	SA-106 G.A.B	0.014				
16	SEE DETAIL DWG	垫圈 3" Sch.40S L=176	SA-312 TP304L	1	SA-312 TP304L	2.0				
17	SEE DETAIL DWG	垫圈 3" Sch.40S L=176	SA-312 TP304L	1	SA-312 TP304L	2.0				
18	GB/T 91-2000	开口销 08X100	SA-36	1	SA-36	0.18				
19	GB/T 91-2000	螺帽 3" Sch.40S L=176	SA-312 TP304L	1	SA-312 TP304L	2.0				
20	SEE DETAIL DWG	垫圈 t=12	SA-240 304L	2	SA-240 304L	1.7				
21	SEE DETAIL DWG	垫圈 0837/061.5 t=12	SA-516 G.A.70	1	SA-516 G.A.70	3.4				
22	SEE DETAIL DWG	垫圈 2" XXS	SA-106 G.A.B	1	SA-106 G.A.B	11.5				
23	SEE DETAIL DWG	垫圈 20	SA-36	1	SA-36	0.014				
24	SEE DETAIL DWG	垫圈 M20	SA-194 G.A.2H	1	SA-194 G.A.2H	0.06				
25	SEE DETAIL DWG	垫圈 1.5" XXS	SA-106 G.A.B	1	SA-106 G.A.B	11.5				
26	SEE DETAIL DWG	垫圈 2"	SA-106 G.A.B	1	SA-106 G.A.B	0.014				
27	SEE DETAIL DWG	垫圈 7" XXS	SA-106 G.A.B	1	SA-106 G.A.B	11.5				
28	SEE DETAIL DWG	垫圈 3" Sch.40S L=176	SA-312 TP304L	1	SA-312 TP304L	2.0				
29	SEE DETAIL DWG	垫圈 3" Sch.40S L=176	SA-312 TP304L	1	SA-312 TP304L	2.0				
30	SEE DETAIL DWG	垫圈 0837/061.5 t=12	SA-516 G.A.70	1	SA-516 G.A.70	3.4				
31	SEE DETAIL DWG	垫圈 2" XXS	SA-106 G.A.B	1	SA-106 G.A.B	11.5				
32	SEE DETAIL DWG	垫圈 20	SA-36	1	SA-36	0.014				
33	SEE DETAIL DWG	垫圈 M20	SA-194 G.A.2H	1	SA-194 G.A.2H	0.06				
34	SEE DETAIL DWG	垫圈 1.5" XXS	SA-106 G.A.B	1	SA-106 G.A.B	11.5				
35	SEE DETAIL DWG	垫圈 2"	SA-106 G.A.B	1	SA-106 G.A.B	0.014				
36	SEE DETAIL DWG	垫圈 7" XXS	SA-106 G.A.B	1	SA-106 G.A.B	11.5				
37	SEE DETAIL DWG	垫圈 3" Sch.40S L=176	SA-312 TP304L	1	SA-312 TP304L	2.0				
38	SEE DETAIL DWG	垫圈 3" Sch.40S L=176	SA-312 TP304L	1	SA-312 TP304L	2.0				
39	SEE DETAIL DWG	垫圈 0837/061.5 t=12	SA-516 G.A.70	1	SA-516 G.A.70	3.4				
40	SEE DETAIL DWG	垫圈 2" XXS	SA-106 G.A.B	1	SA-106 G.A.B	11.5				
41	SEE DETAIL DWG	垫圈 20	SA-36	1	SA-36	0.014				
42	SEE DETAIL DWG	垫圈 M20	SA-194 G.A.2H	1	SA-194 G.A.2H	0.06				
43	SEE DETAIL DWG	垫圈 1.5" XXS	SA-106 G.A.B	1	SA-106 G.A.B	11.5				
44	SEE DETAIL DWG	垫圈 2"	SA-106 G.A.B	1	SA-106 G.A.B	0.014				
45	SEE DETAIL DWG	垫圈 7" XXS	SA-106 G.A.B	1	SA-106 G.A.B	11.5				
46	SEE DETAIL DWG	垫圈 3" Sch.40S L=176	SA-312 TP304L	1	SA-312 TP304L	2.0				
47	SEE DETAIL DWG	垫圈 3" Sch.40S L=176	SA-312 TP304L	1	SA-312 TP304L	2.0				
48	SEE DETAIL DWG	垫圈 0837/061.5 t=12	SA-516 G.A.70	1	SA-516 G.A.70	3.4				
49	SEE DETAIL DWG	垫圈 2" XXS	SA-106 G.A.B	1	SA-106 G.A.B	11.5				
50	SEE DETAIL DWG	垫圈 20	SA-36	1	SA-36	0.014				
51	SEE DETAIL DWG	垫圈 M20	SA-194 G.A.2H	1	SA-194 G.A.2H	0.06				
52	SEE DETAIL DWG	垫圈 1.5" XXS	SA-106 G.A.B	1	SA-106 G.A.B	11.5				
53	SEE DETAIL DWG	垫圈 2"	SA-106 G.A.B	1	SA-106 G.A.B	0.014				
54	SEE DETAIL DWG	垫圈 7" XXS	SA-106 G.A.B	1	SA-106 G.A.B	11.5				
55	SEE DETAIL DWG	垫圈 3" Sch.40S L=176	SA-312 TP304L	1	SA-312 TP304L	2.0				
56	SEE DETAIL DWG	垫圈 3" Sch.40S L=176	SA-312 TP304L	1	SA-312 TP304L	2.0				
57	SEE DETAIL DWG	垫圈 0837/061.5 t=12	SA-516 G.A.70	1	SA-516 G.A.70	3.4				
58	SEE DETAIL DWG	垫圈 2" XXS	SA-106 G.A.B	1	SA-106 G.A.B	11.5				
59	SEE DETAIL DWG	垫圈 20	SA-36	1	SA-36	0.014				
60	SEE DETAIL DWG	垫圈 M20	SA-194 G.A.2H	1	SA-194 G.A.2H	0.06				
61	SEE DETAIL DWG	垫圈 1.5" XXS	SA-106 G.A.B	1	SA-106 G.A.B	11.5				
62	SEE DETAIL DWG	垫圈 2"	SA-106 G.A.B	1	SA-106 G.A.B	0.014				
63	SEE DETAIL DWG	垫圈 7" XXS	SA-106 G.A.B	1	SA-106 G.A.B	11.5				
64	SEE DETAIL DWG	垫圈 3" Sch.40S L=176	SA-312 TP304L	1	SA-312 TP304L	2.0				
65	SEE DETAIL DWG	垫圈 3" Sch.40S L=176	SA-312 TP304L	1	SA-312 TP304L	2.0				
66	SEE DETAIL DWG	垫圈 0837/061.5 t=12	SA-516 G.A.70	1	SA-516 G.A.70	3.4				
67	SEE DETAIL DWG	垫圈 2" XXS	SA-106 G.A.B	1	SA-106 G.A.B	11.5				
68	SEE DETAIL DWG	垫圈 20	SA-36	1	SA-36	0.014				
69	SEE DETAIL DWG	垫圈 M20	SA-194 G.A.2H	1	SA-194 G.A.2H	0.06				
70	SEE DETAIL DWG	垫圈 1.5" XXS	SA-106 G.A.B	1	SA-106 G.A.B	11.5				
71	SEE DETAIL DWG	垫圈 2"	SA-106 G.A.B	1	SA-106 G.A.B	0.014				
72	SEE DETAIL DWG	垫圈 7" XXS	SA-106 G.A.B	1	SA-106 G.A.B	11.5				
73	SEE DETAIL DWG	垫圈 3" Sch.40S L=176	SA-312 TP304L	1	SA-312 TP304L	2.0				
74	SEE DETAIL DWG	垫圈 3" Sch.40S L=176	SA-312 TP304L	1	SA-312 TP304L	2.0				
75	SEE DETAIL DWG	垫圈 0837/061.5 t=12	SA-516 G.A.70	1	SA-516 G.A.70	3.4				
76	SEE DETAIL DWG	垫圈 2" XXS	SA-106 G.A.B	1	SA-106 G.A.B	11.5				
77	SEE DETAIL DWG	垫圈 20	SA-36	1	SA-36	0.014				
78	SEE DETAIL DWG	垫圈 M20	SA-194 G.A.2H	1	SA-194 G.A.2H	0.06				
79	SEE DETAIL DWG	垫圈 1.5" XXS	SA-106 G.A.B	1	SA-106 G.A.B	11.5				
80	SEE DETAIL DWG	垫圈 2"	SA-106 G.A.B	1	SA-106 G.A.B	0.014				
81	SEE DETAIL DWG	垫圈 7" XXS	SA-106 G.A.B	1	SA-106 G.A.B	11.5				
82	SEE DETAIL DWG	垫圈 3" Sch.40S L=176	SA-312 TP304L	1	SA-312 TP304L	2.0				
83	SEE DETAIL DWG	垫圈 3" Sch.40S L=176	SA-312 TP304L	1	SA-312 TP304L	2.0				
84	SEE DETAIL DWG	垫圈 0837/061.5 t=12	SA-516 G.A.70	1	SA-516 G.A.70	3.4				
85	SEE DETAIL DWG	垫圈 2" XXS	SA-106 G.A.B	1	SA-106 G.A.B	11.5				
86	SEE DETAIL DWG	垫圈 20	SA-36	1	SA-36	0.014				
87	SEE DETAIL DWG	垫圈 M20	SA-194 G.A.2H	1	SA-194 G.A.2H	0.06				
88	SEE DETAIL DWG	垫圈 1.5" XXS	SA-106 G.A.B	1	SA-106 G.A.B	11.5				
89	SEE DETAIL DWG	垫圈 2"	SA-106 G.A.B	1	SA-106 G.A.B	0.014				
90	SEE DETAIL DWG	垫圈 7" XXS	SA-106 G.A.B	1	SA-106 G.A.B	11.5				
91	SEE DETAIL DWG	垫圈 3" Sch.40S L=176	SA-312 TP304L	1	SA-312 TP304L	2.0				
92	SEE DETAIL DWG	垫圈 3" Sch.40S L=176	SA-312 TP304L	1	SA-312 TP304L	2.0				
93	SEE DETAIL DWG	垫圈 0837/061.5 t=12	SA-516 G.A.70	1	SA-516 G.A.70	3.4				
94	SEE DETAIL DWG	垫圈 2" XXS	SA-106 G.A.B	1	SA-106 G.A.B	11.5				
95	SEE DETAIL DWG	垫圈 20	SA-36	1	SA-36	0.014				
96	SEE DETAIL DWG	垫圈 M20	SA-194 G.A.2H	1	SA-194 G.A.2H	0.06				
97	SEE DETAIL DWG	垫圈 1.5" XXS	SA-106 G.A.B	1	SA-106 G.A.B	11.5				
98	SEE DETAIL DWG	垫圈 2"	SA-106 G.A.B	1	SA-106 G.A.B	0.014				
99	SEE DETAIL DWG	垫圈 7" XXS	SA-106 G.A.B	1	SA-106 G.A.B	11.5				
100	SEE DETAIL DWG	垫圈 3" Sch.40S L=176	SA-312 TP304L	1	SA-312 TP304L	2.0				

REV.	PURPOSE OF ISSUE	DATE	DESIGN	CHECK	REVIEW	APPROVE
1	Final Issue	11.30.2018	Q TU			
2	Final Issue	11.2.2018	Q TU			
3	Final Issue	2.28.2018	Q TU			
4	Final Issue	11.17.2017	Q TU			
5	Issued For Approval	9.20.2017	Q TU			
6	Issued For Approval	8.22.2017	Q TU			

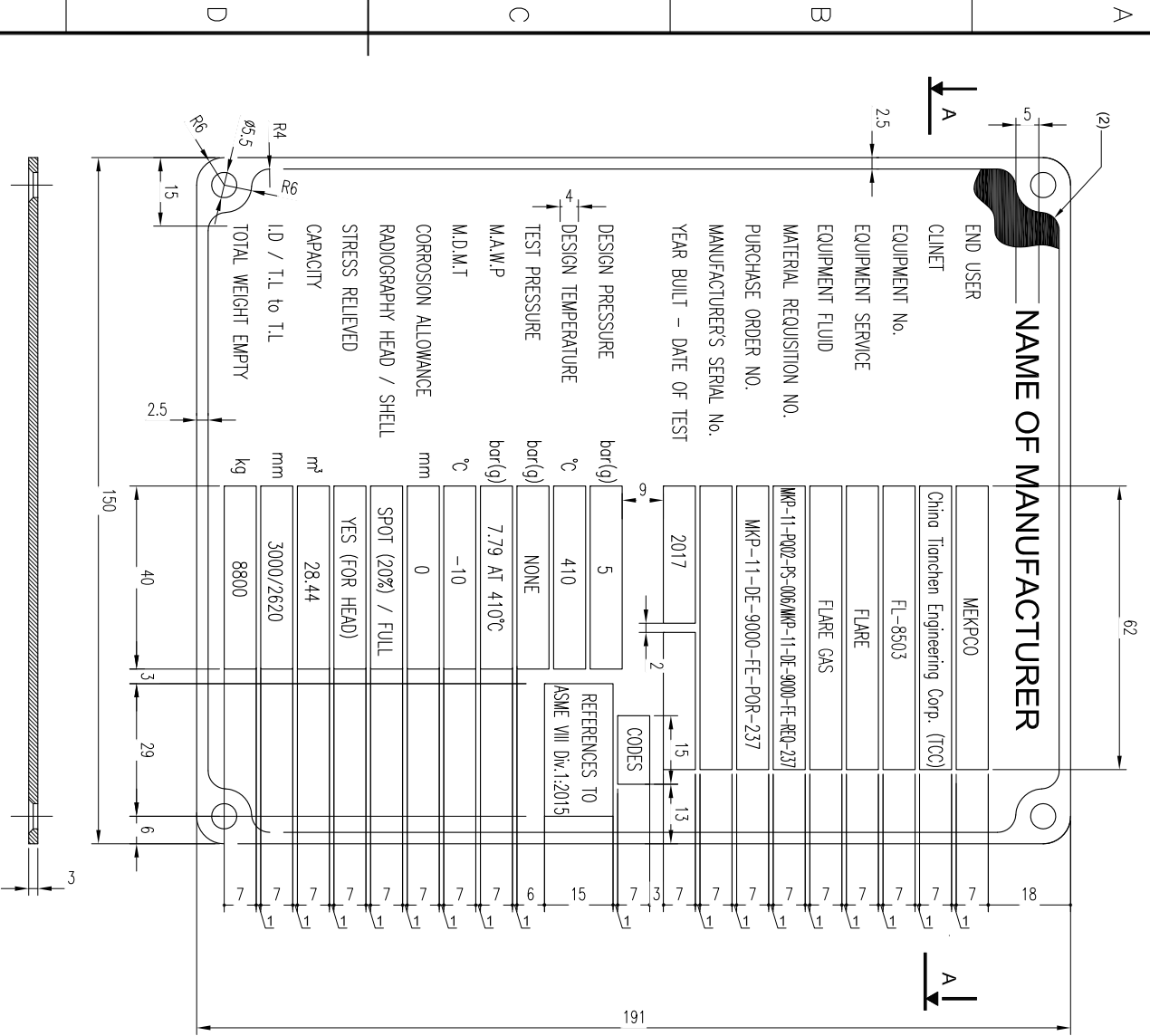
<p>OWNER: Middle East Kimiaye Pars Company</p>	
<p>LICENSOR: HALDOR TOPSØE A/S</p>	
<p>CONTRACTOR: T</p>	

技术要求 GENERAL NOTES

- 铭牌上的字符，外框和钢印框应凸起，其表面抛光，其余部位蚀刻深度1mm，且蚀刻成黑色。CHARACTERS, FRAME AND STAMPING SQUARES IN THE NAME PLATE SHALL BE EMBOSSED AND THEIR FACES SHALL BE POLISHED BY BUFFING; THE OTHER PART SHALL BE ETCHED 1mm IN DEPTH; BACKGROUND PAINTED BLACK.
- 标志标志及日期用钢印打在铭牌上，其余标志以蚀刻方法标志在铭牌上。NAMEPLATE MAY HAVE MARKINGS PRODUCED BY ETCHING, EXCEPT THAT THE CERTIFICATION MARK AND DATA SHALL BE STAMPED ON THE NAMEPLATE.
- 采用罗马字体，且应明显易读。ALL THE CHARACTERS SHALL BE ROMANS STYLE AND ALSO SHALL BE LEGIBLE AND READABLE.
- 铭牌上的各种标志，其字体高度不小于4mm。ALL THE CHARACTERS IN THE NAMEPLATE SHALL BE NOT LESS THAN 4mm HEIGHT.
- 编号和制造年份蚀刻之后填写。MANUF. SERIAL NO. AND YEAR BUILT TO BE PUNCHED AT WORKSHOP AFTER FINAL INSPECTION.



NAME PLATE MOUNTING BRACKET



SECTION A-A

REV.	PURPOSE OF ISSUE	DATE	DESIGN	DRAW	CHECK	REVIEW	APPROVE
Δ	Final issue	11.30.2018	Q TU	CD FU	HY LIU		
Δ	Final issue	11.2.2018	Q TU	CD FU	HY LIU		
Δ	Final issue	2.28.2018	Q TU	CD FU	HY LIU		
Δ	Final issue	11.17.2017	Q TU	CD FU	HY LIU		
Δ	Issued For Approval	9.20.2017	Q TU	CD FU	HY LIU		

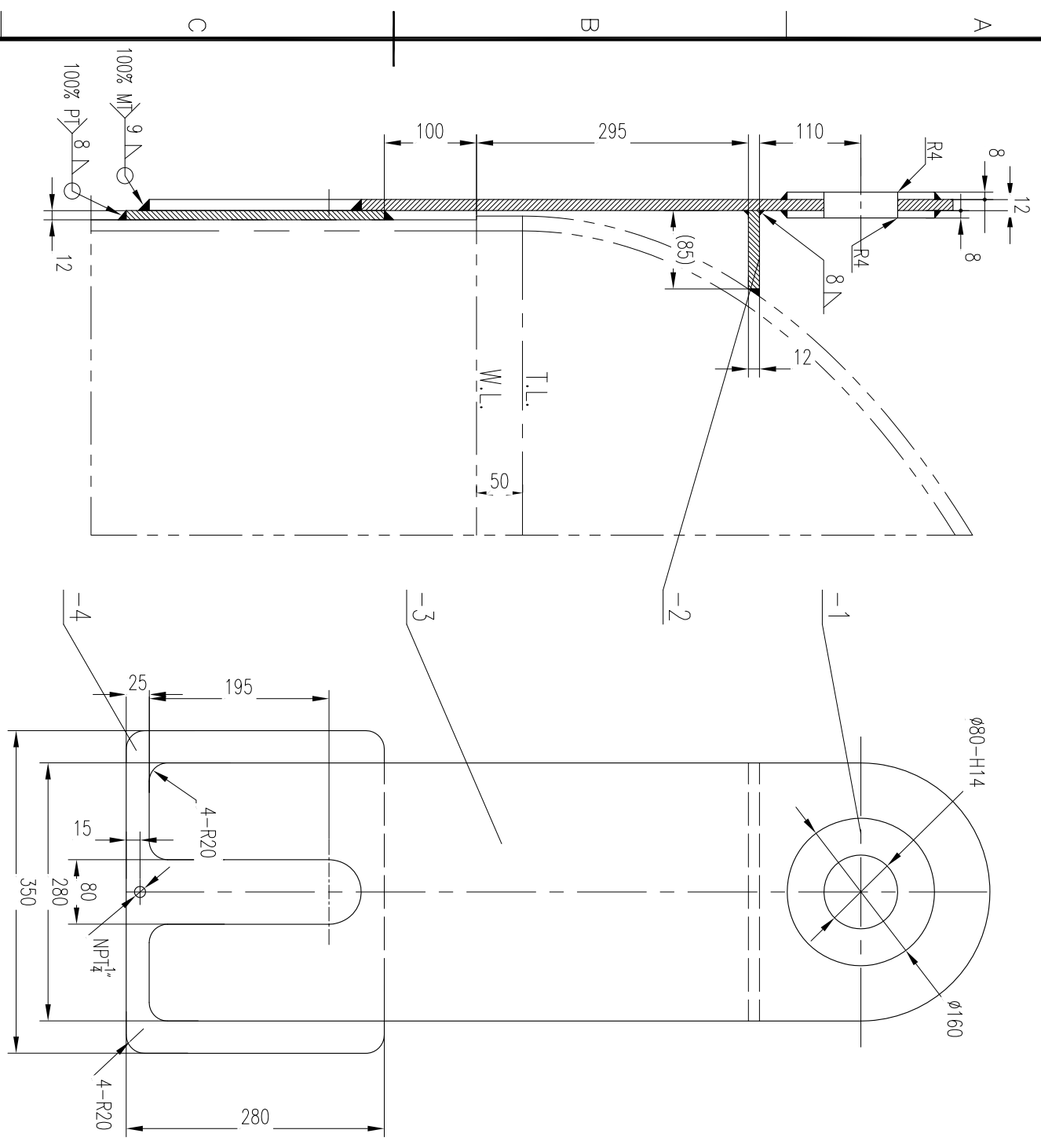
THIS DOCUMENT IS THE PROPERTY OF TCC. NO PART OF THIS DOCUMENT SHALL BE REPRODUCED OR DISCLOSED TO OTHERS OR USED FOR ANY PURPOSE WHATSOEVER EXCEPT WITH THE PRIOR WRITTEN PERMISSION OF TCC.

OWNER: Middle East
Kimiye Pars Company

件号	名称	材料	数量	材料	重量(kg)	比例	所在图号	装配图号	备注
-3	铆钉	4X10	4	304 SS	0.16	1:1	1701308500E002-04	1701308500E002-02	
-2	铭牌	t=3	1	304 SS	0.7				
-1	图号或标准号	铭牌架 t=6	1	SA-240 304L	2.6				

LICENSOR		HALDOR TOPSØE A/S	
CONTRACTOR		TCC 中国天辰工程有限公司 CHINA TIANCHEN ENGINEERING CORPORATION	
VENDOR		江苏中圣高科技产业有限公司 JIANGSU SUNPOWER TECHNOLOGY CO., LTD	
CONTRACTOR DRAWING NO.		MKP-11-DE-9000-FE-REQ-237	
SHEET		01 TOTAL 01	
VENDOR DRAWING NO.		1701308500E002-04	
SHEET		4 TOTAL 7	
PROJECT		MKP Methanol Project	
UNIT		Flare	
PHASE		Detail Engineering	
SCALE		1:18 SHEET 1 TOT. 1 SIZE A2	
OWNER		MKP-V0-8500-237-308-A2	

25
其余
OTHERS
板面
PLATE



件号	图号或标准号	名称	数量	材料	备注
-4		垫板 t=12 PAD	1	SA-240 304L	9.2
-3		吊耳板 t=12 LIFTING PLATE	1	SA-516 Gr.70	24
-2		连接板 t=12 CON. PLATE	1	SA-240 304L	1.6
-1		衬板 t=8 PLATE	2	SA-516 Gr.70	0.9
					1.8

件号	名称	材料	质量(kg)	比例	所在图号	装配图号
29	吊耳 LIFTING LUG	组合件 ASSEMBLY	36.6	1:1	17013085000EQ02-05/17013085000EQ02-02	
△	Final Issue				CD FU	HY LIU
△	Final Issue				CD FU	HY LIU
△	Final Issue				CD FU	HY LIU
△	Final Issue				CD FU	HY LIU
△	Issued For Approval				CD FU	HY LIU

REV.	PURPOSE OF ISSUE	DATE	DESIGN	DRAW	CHECK	REVIEW	APPROVE

OWNER:

Middle East
Kimiaye Pars Company



Middle East
Kimiaye Pars Company

HALDOR TOPSØE A/S
COPENHAGEN
DENMARK

中国天辰工程有限公司
CHINA TIANCHEN ENGINEERING CORPORATION

CONTRACTOR DRAWING NO.
MKP-11-DE-9000-FE-REQ-237
SHEET 01 TOTAL 01

江苏中圣高科技产业有限公司
JIANGSU SUNPOWER TECHNOLOGY CO., LTD

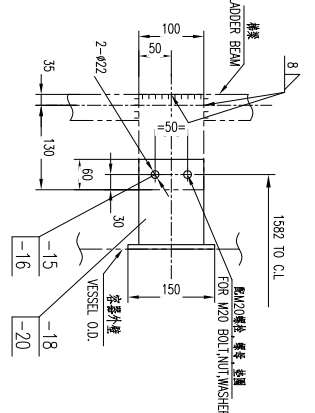
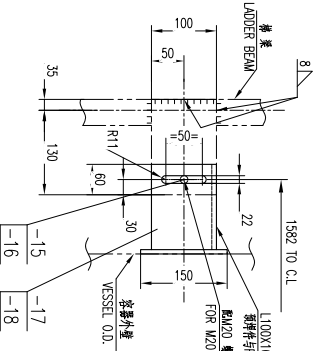
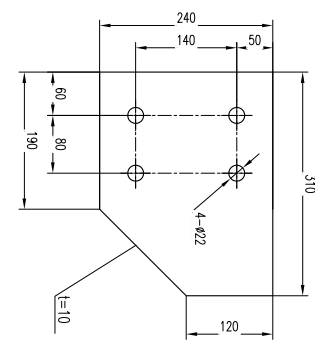
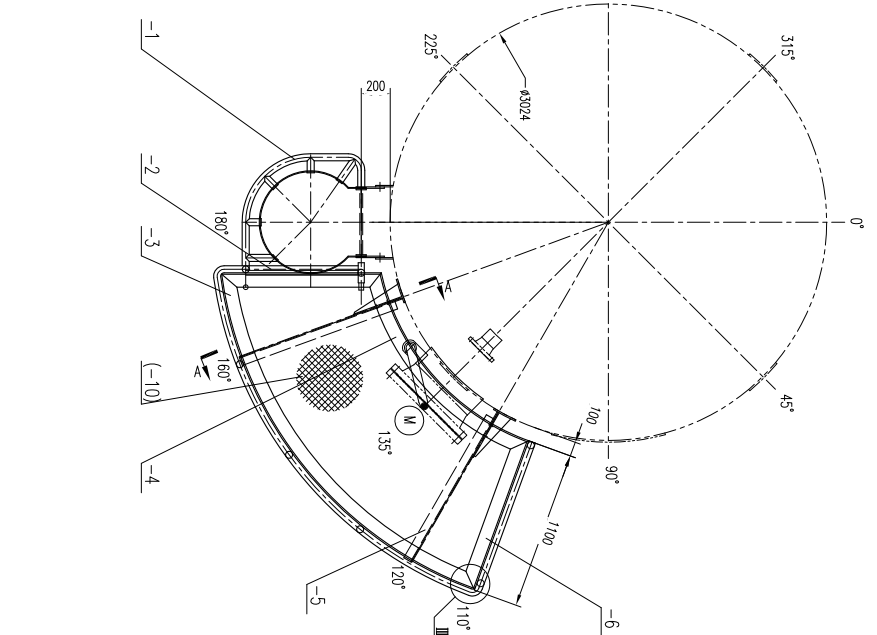
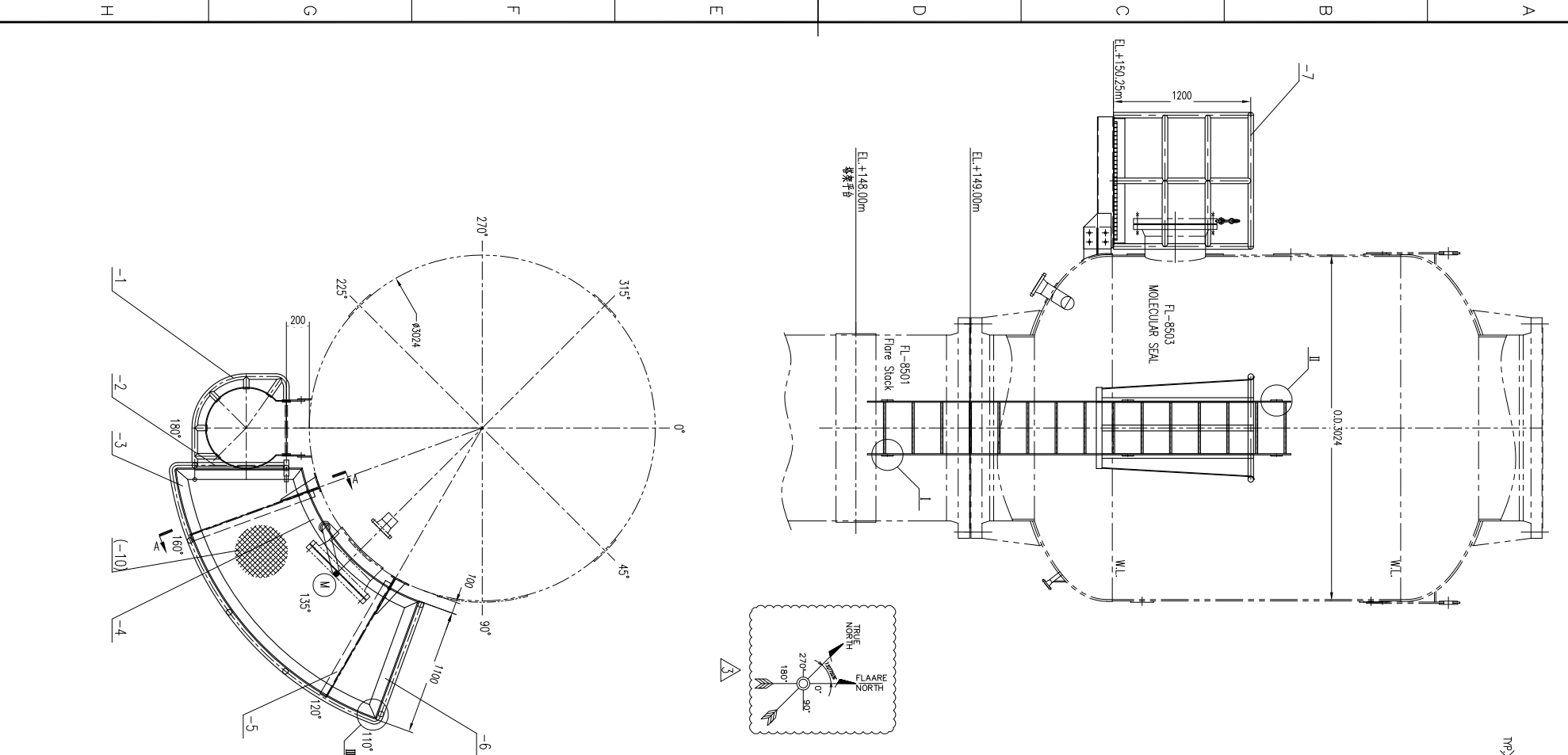
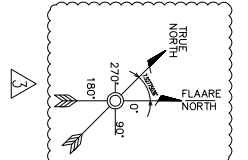
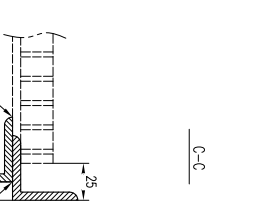
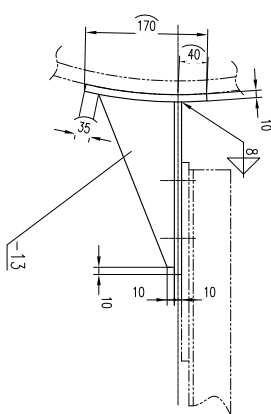
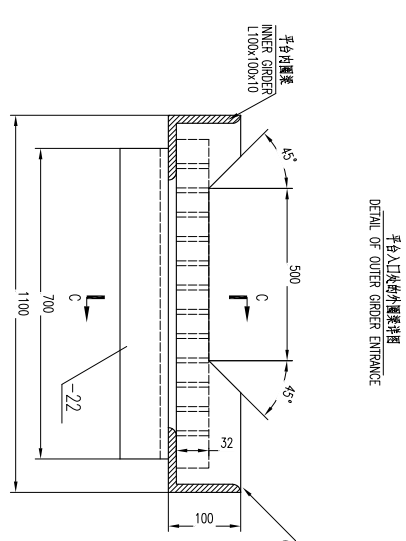
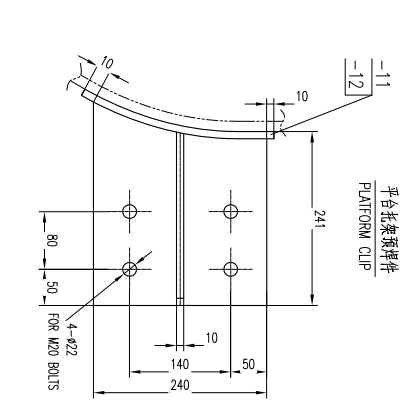
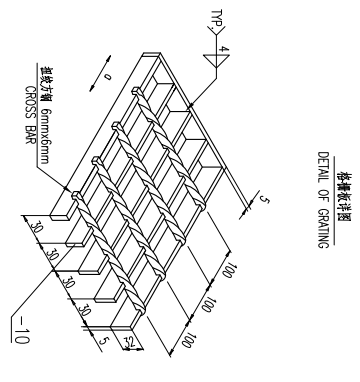
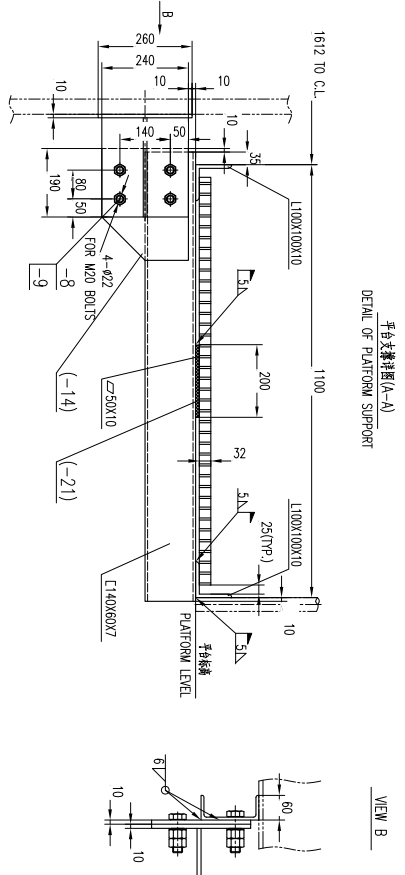
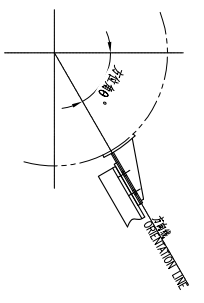
VENDOR DRAWING NO.
17013085000EQ02-05
SHEET 5 TOTAL 7

SCALE	SHEET	TOT.	SIZE	OWNER	DWG. NO.
1:18	1	1	A3	MKP Methanol Project	
				Flare	
				Detail Engineering	

技术要求 GENERAL NOTES

1. 未注焊接坡口按GB 50205-2001中表4.2.2中规定的坡口型式和尺寸执行。
2. 焊缝焊脚高度按GB 50205-2001中表4.2.2中规定的焊脚高度执行。
3. 平台平台板厚度按GB 50205-2001中表4.2.2中规定的厚度执行。
4. 除注脚外，图中所有尺寸均按GB 50205-2001中表4.2.2中规定的公差执行。
5. 所有尺寸均以毫米为单位，除非另有说明。

平台桁架方位示意图
PLATFORM BRACKET ORIENTATION



作图-14 详图

I (续)

II (续)

序号	图号	名称	数量	材料	重量 (kg)	备注
-22	平台外圈桁架	平台外圈桁架 L100X100X10	1	ST-37	6	
-21	平台内圈桁架	平台内圈桁架 L100X100X10	2	SA-516 Gr-70	2	
-20	平台外圈桁架	平台外圈桁架 L100X100X10	2	SA-516 Gr-70	3.5	
-19	平台外圈桁架	平台外圈桁架 L100X100X10	2	SA-516 Gr-70	4.5	
-18	平台外圈桁架	平台外圈桁架 L100X100X10	4+2	SA-240 304L	3.8	
-17	平台外圈桁架	平台外圈桁架 L100X100X10	2	SA-516 Gr-70	3.5	
-16	平台外圈桁架	平台外圈桁架 L100X100X10	16	Grade 8	0.10	
-15	平台外圈桁架	平台外圈桁架 L100X100X10	8	Grade 8.8	0.30	
-14	平台外圈桁架	平台外圈桁架 L100X100X10	2	SA-36	5.7	
-13	平台外圈桁架	平台外圈桁架 L100X100X10	2	SA-516 Gr-70	3.0	
-12	平台外圈桁架	平台外圈桁架 L100X100X10	2	SA-516 Gr-70	5.3	
-11	平台外圈桁架	平台外圈桁架 L100X100X10	2	SA-240 304L	3.8	
-10	平台外圈桁架	平台外圈桁架 L100X100X10	2	SA-36	165	
-9	平台外圈桁架	平台外圈桁架 L100X100X10	32	Grade 8	0.10	
-8	平台外圈桁架	平台外圈桁架 L100X100X10	8	Grade 8.8	0.30	
-7	平台外圈桁架	平台外圈桁架 L100X100X10	1	Grade 8.8	2.4	
-6	平台外圈桁架	平台外圈桁架 L100X100X10	1	Grade 8.8	128.5	
-5	平台外圈桁架	平台外圈桁架 L100X100X10	2	ST-37	33.3	
-4	平台外圈桁架	平台外圈桁架 L100X100X10	2	ST-37	19.2	
-3	平台外圈桁架	平台外圈桁架 L100X100X10	~1.7m	ST-37	15.7	
-2	平台外圈桁架	平台外圈桁架 L100X100X10	~5.2m	SA-36	78.6	
-1	平台外圈桁架	平台外圈桁架 L100X100X10	1	SA-36	16	

图号	名称	数量	材料	重量 (kg)	备注
1	平台外圈桁架	1	SA-36	16	
2	平台外圈桁架	2	ST-37	33.3	
3	平台外圈桁架	~1.7m	ST-37	15.7	
4	平台外圈桁架	~5.2m	SA-36	78.6	
5	平台外圈桁架	1	SA-36	16	

Middle East
Kimiyae Pars Company

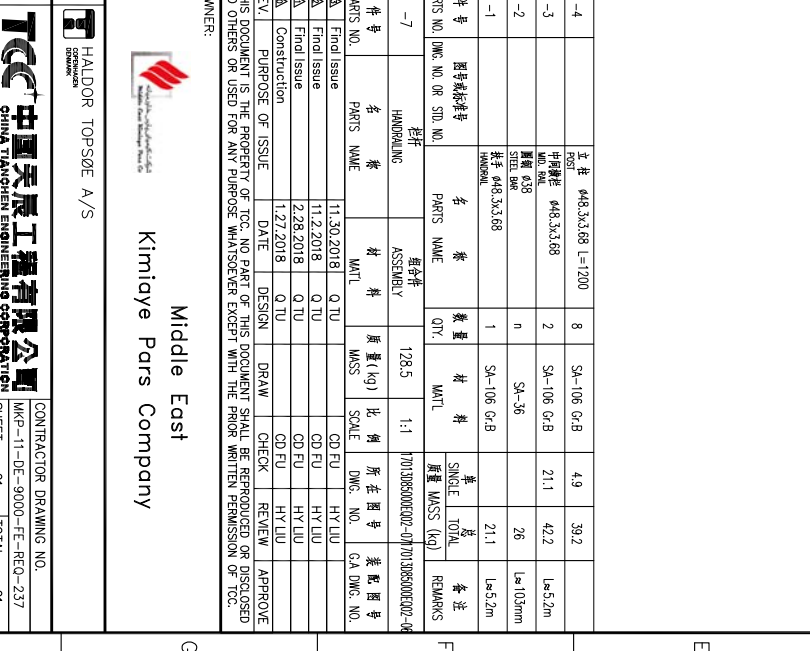
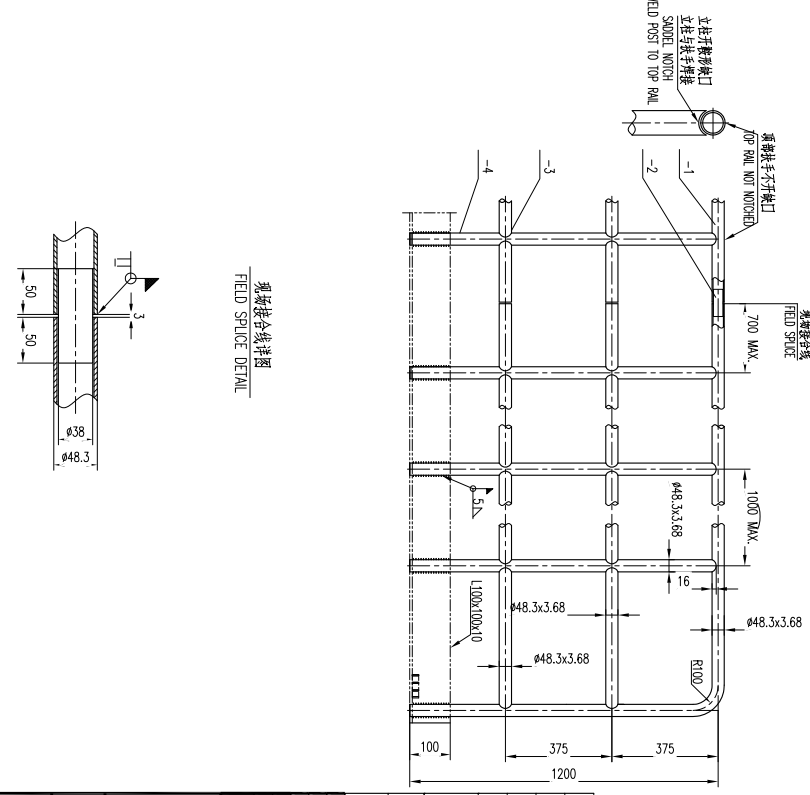
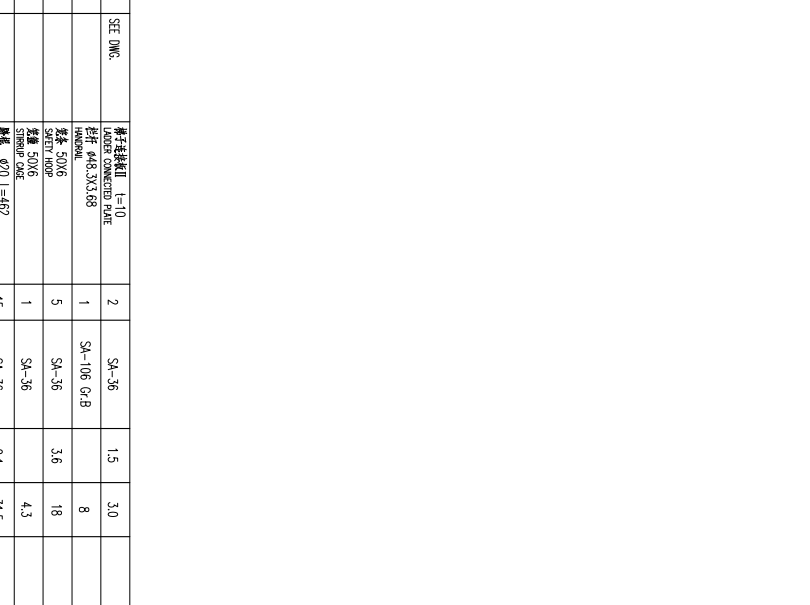
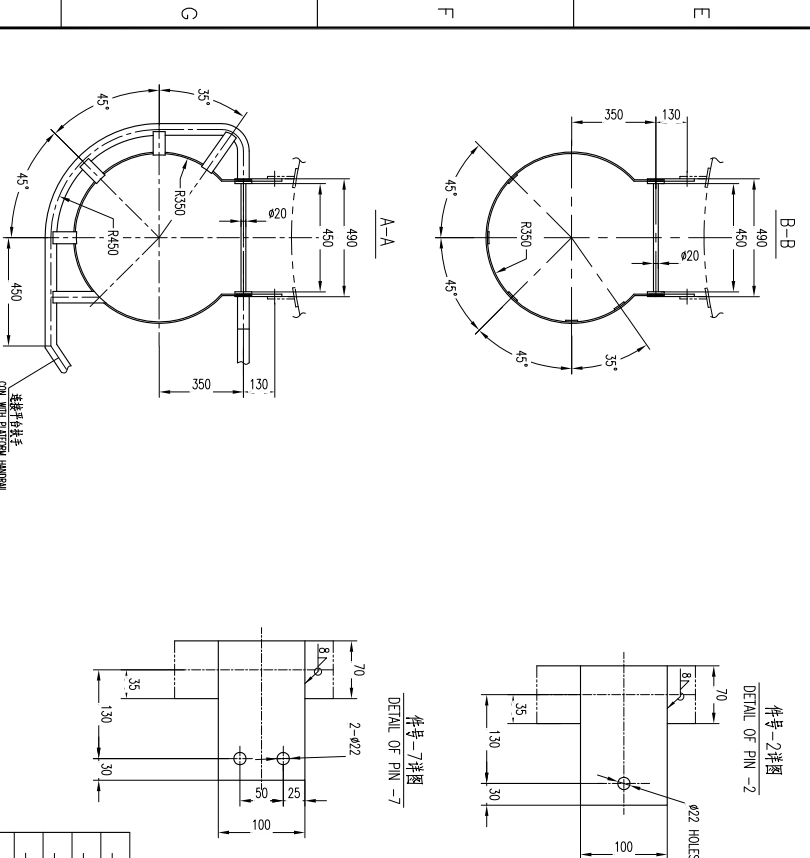
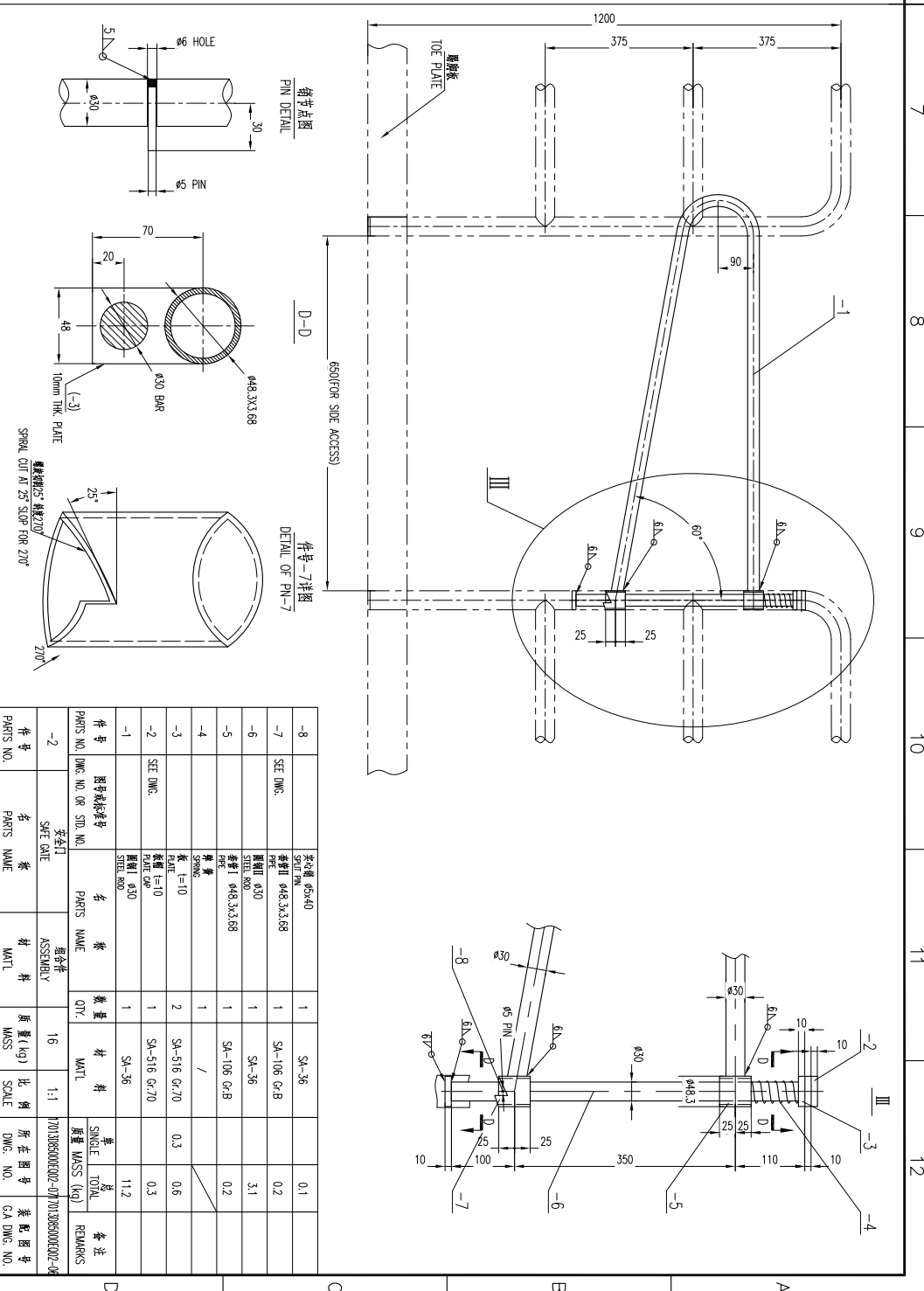
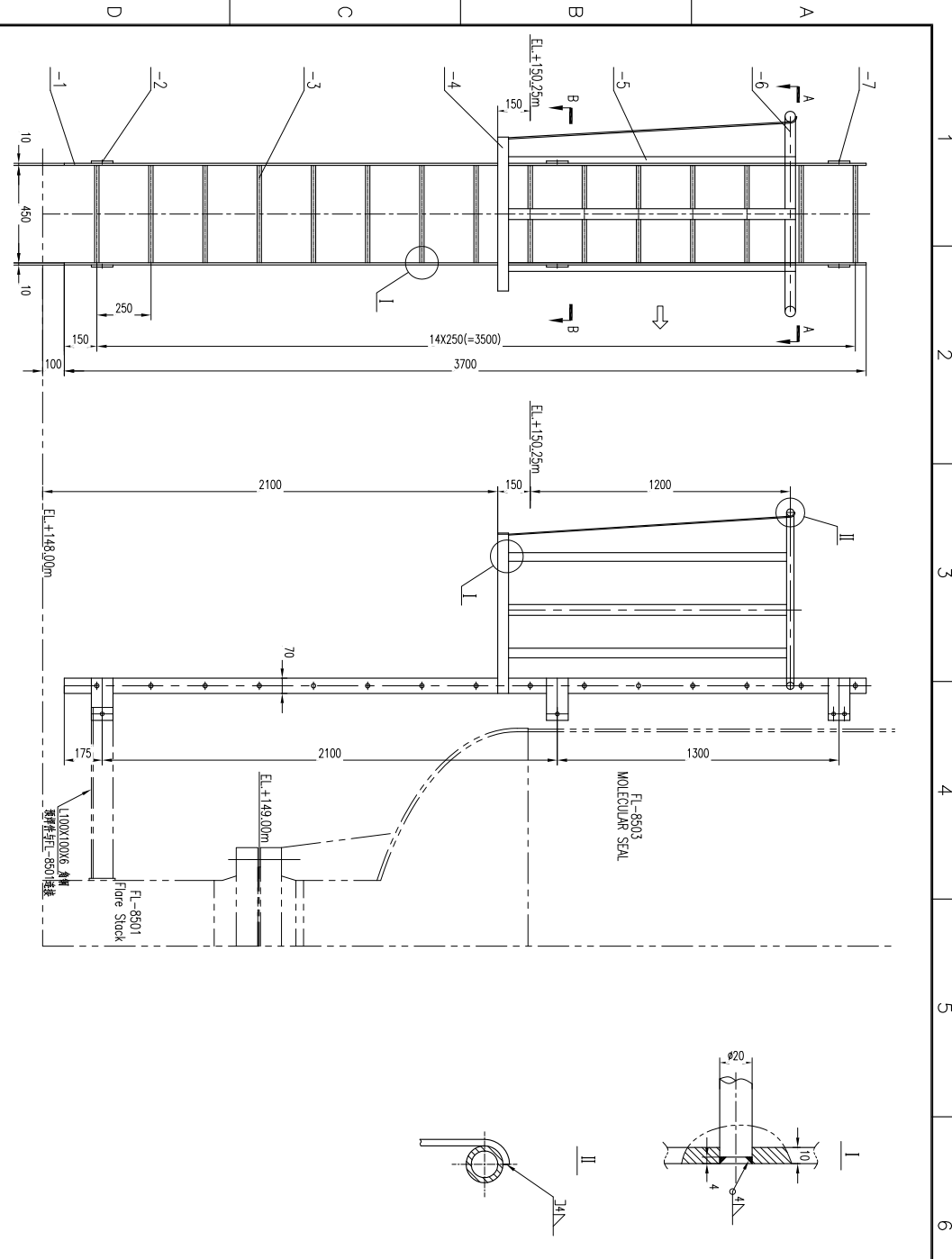
CONTRACTOR DRAWING NO.
KMP-11-DE-9000-FE-REC-237

江苏中圣高科技产业有限公司
JIANGSU SHENGTAI TECHNOLOGY CO., LTD

MOLECULAR SEAL LADDER & PLATFORM DRAWING
FL-8503

Counter Signing	Sign	Date

SCALE	SHEET	TOT.	SIZE	A1	DWG NO.
1:25	1	1	A1		KMP-10-8500-237-308-A1



REV	DESCRIPTION	DATE	DESIGN	CHECK	REVIEW	APPROVE
1	Final issue	11.30.2018	Q.TU	CD.EU	HY.LIU	
2	Final issue	2.28.2018	Q.TU	CD.EU	HY.LIU	
3	Construction	1.27.2018	Q.TU	CD.EU	HY.LIU	

REV	DESCRIPTION	DATE	DESIGN	CHECK	REVIEW	APPROVE
1	Final issue	11.30.2018	Q.TU	CD.EU	HY.LIU	
2	Final issue	2.28.2018	Q.TU	CD.EU	HY.LIU	
3	Construction	1.27.2018	Q.TU	CD.EU	HY.LIU	

REV	DESCRIPTION	DATE	DESIGN	CHECK	REVIEW	APPROVE
1	Final issue	11.30.2018	Q.TU	CD.EU	HY.LIU	
2	Final issue	2.28.2018	Q.TU	CD.EU	HY.LIU	
3	Construction	1.27.2018	Q.TU	CD.EU	HY.LIU	

REV	DESCRIPTION	DATE	DESIGN	CHECK	REVIEW	APPROVE
1	Final issue	11.30.2018	Q.TU	CD.EU	HY.LIU	
2	Final issue	2.28.2018	Q.TU	CD.EU	HY.LIU	
3	Construction	1.27.2018	Q.TU	CD.EU	HY.LIU	

REV	DESCRIPTION	DATE	DESIGN	CHECK	REVIEW	APPROVE
1	Final issue	11.30.2018	Q.TU	CD.EU	HY.LIU	
2	Final issue	2.28.2018	Q.TU	CD.EU	HY.LIU	
3	Construction	1.27.2018	Q.TU	CD.EU	HY.LIU	