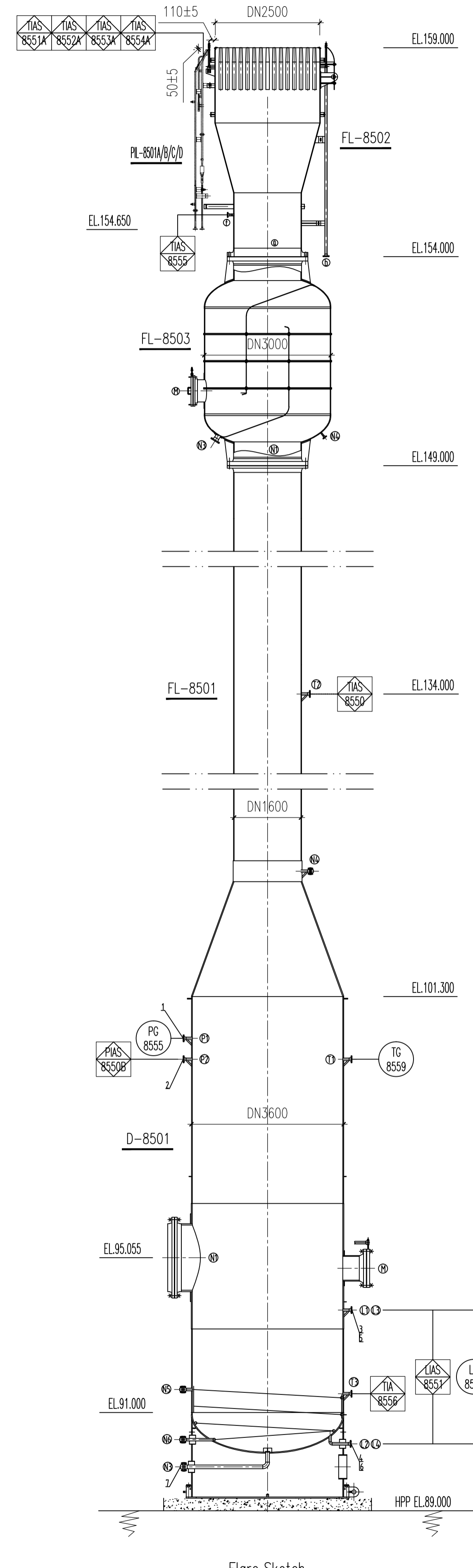
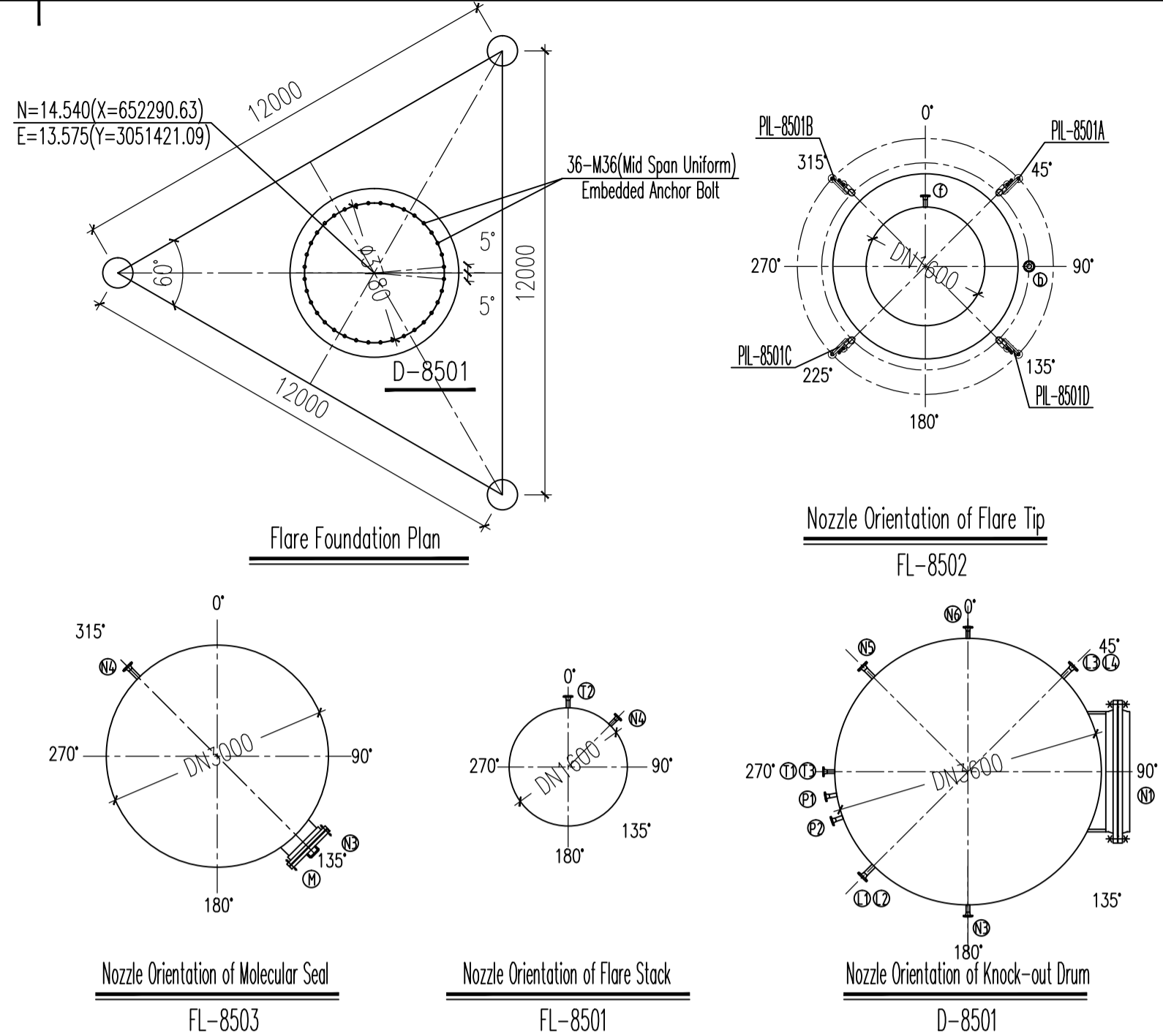


Flare Elevation



Flare Sketch  
Not in Scale



NOZZLE SCHEDULE									
NOZZLE	NPS	NECK SCH.	FLANGE				SERVICE	NOTES	
			STD.	CLASS	TYPE	FACING			
FL-8501 & D-8501	N1	64"	t=34	EN 1092-1	16	WN	RF	FLARE GAS INLET	WITH FLANGE
	N2	64"	t=34	EN 1092-1	16	WN	RF	FLARE GAS OUTLET	/
	N3	3"	Sch40	ASME B16.5	300	WN	RF	DRAIN	WITH FLANGE
	N4	2"	Sch40	ASME B16.5	300	WN	RF	CLEAR GAS INLET	WITH FLANGE
	N5	1"	Sch160	ASME B16.5	300	WN	RF	VAPOR INLET	WITH FLANGE
	N6	1"	Sch160	ASME B16.5	300	WN	RF	VAPOR OUTLET	WITH FLANGE
	P1	11/2"	Sch80	ASME B16.5	300	WN	RF	LOCAL PRESSURE GAUGE	/
	P2	11/2"	Sch80	ASME B16.5	300	WN	RF	PRESSURE TRANSMITTER	/
	T1	2"	Sch80	ASME B16.5	300	WN	RF	FLARE GAS LOCAL TEMP. METER	WITH BOLT & GASKET
	T2	2"	Sch80	ASME B16.5	300	WN	RF	FLARE GAS LOCAL TEMP. TRANS.	WITH BOLT & GASKET
FL-8503	T3	2"	Sch80	ASME B16.5	300	WN	RF	CONDENSATE LOCAL TEMP. TRANS.	WITH BOLT & GASKET
	L1,L2	3"	Sch80	ASME B16.5	300	WN	RF	LIQUID LEVEL TRANSMITTER	/
	L3,L4	2"	Sch80	ASME B16.5	300	WN	RF	LOCAL LEVEL METER	/
	M	24"	t=20	ASME B16.5	300	WN	RF	MANWAY	/
FL-8502	N1	64"	/	EN 1092-1	16	WN	RF	FLARE GAS INLET	WITH BOLT & GASKET
	N3	4"	Sch80	ASME B16.5	150	WN	RF	DRAIN OUTLET	/
	N4	1"	Sch80	ASME B16.5	150	WN	RF	PURGE GAS INLET	/
FL-8502	M	24"	/	ASME B16.5	150	WN	RF	MANWAY	/
	a	64"	/	EN 1092-1	16	WN	RF	FLARE GAS INLET	/
FL-8502	b	2"	Sch80S	ASME B16.5	600	WN	RF	STEAM INLET	/
	f	2"	Sch80S	ASME B16.5	150	WN	RF	TEMPERATURE MEASURING PORT	WITH BOLT & GASKET

INSTALLATION MATERIALS		
NPS(L)	DESCRIPTION	QUANTITY
1 NOZZLE P1 @ D-8501	11/2" BIL. FLANGE, BL, CL300, RF, A105, ASME B16.5	1pc
	11/2" GATE VALVE, BB, OS&Y, CL300, RF, A105, Trim: 13Cr/STL, API602, SOLID WEDGE, Z41H1-300C1	1pc
	11/2" FLAT RING GASKET, SS REINFORCED GRAPHITE, RF, CL300, ASME B16.21, ASME B16.5, T=3.2mm KLINGER PSM-AS OR EQUAL	2pc
2 NOZZLE P2 @ D-8501	M3/4x110 FULL THREADED STUD BOLT/2 HEAVY NUTS (fl TYPE, m=1.0d), ASTM A193 B7/A194 2H, GALVANIZED, ASME B18.2.1/18.2.2	8set
	11/2" FLANGE, SW, CL300, RF, A105, ASME B16.5	1pc
3&4 NOZZLE L1&L2 @ D-8501	11/2" FLAT RING GASKET, SS REINFORCED GRAPHITE, RF, CL300, ASME B16.21, ASME B16.5, T=3.2mm KLINGER PSM-AS OR EQUAL	1pc
	11/2" x 3/4" SWG, PE, ASTM A106 Gr. B, CON, MSS SP-95, CL3000	1pc
	3/4" GATE VALVE, BB, OS&Y, CL800, SW, A105, Trim: 13Cr/STL, API602, SOLID WEDGE, Z51H1-800C1	1pc
5&6 NOZZLE L3&L4 @ D-8501	M3/4x110 FULL THREADED STUD BOLT/2 HEAVY NUTS (fl TYPE, m=1.0d), ASTM A193 B7/A194 2H, GALVANIZED, ASME B18.2.1/18.2.2	4set
	3" FLAT RING GASKET, SS REINFORCED GRAPHITE, RF, CL300, ASME B16.21, ASME B16.5, T=3.2mm KLINGER PSM-AS OR EQUAL	4pc
	2" FLAT RING GASKET, SS REINFORCED GRAPHITE, RF, CL300, ASME B16.21, ASME B16.5, T=3.2mm KLINGER PSM-AS OR EQUAL	4pc
7 NOZZLE N3 @ D-8501	2" GATE VALVE, BB, OS&Y, CL300, RF, ASTM A216-WCB, Trim: 13Cr/STL, API600, FLEXIBLE WEDGE, Z40H1-300C2	2pc
	M5/8x105 FULL THREADED STUD BOLT/2 HEAVY NUTS (fl TYPE, m=1.0d), ASTM A193 B7/A194 2H, GALVANIZED, ASME B18.2.1/18.2.2	32set
	3" PIPE, SMLS, BE, ASTM A106 Gr. B, ASME B36.10M, SCH40	0.6m
	3" ELBOW 90°, SMLS, LR, BW, ASTM A234 WPB, ASME B16.9, SCH40	1pc
	3" GATE VALVE, BB, OS&Y, CL300, RF, ASTM A216-WCB, Trim: 13Cr/STL, API600, FLEXIBLE WEDGE, Z40H1-300C2	1pc
	3" FLANGE, WN, CL300, RF, A105, ASME B16.5, SCH40	2pc
	3" FLAT RING GASKET, SS REINFORCED GRAPHITE, RF, CL300, ASME B16.21, ASME B16.5, T=3.2mm KLINGER PSM-AS OR EQUAL	2pc
M3/4x125 FULL THREADED STUD BOLT/2 HEAVY NUTS (fl TYPE, m=1.0d), ASTM A193 B7/A194 2H, GALVANIZED, ASME B18.2.1/18.2.2	16set	
3" FLUG, NPT, ASTM A105, ASME B16.11, CL3000	1pc	

LIST OF INSTALLATION ELEVATION FOR EQUIPMENT

ITEM NO.	EQUIPMENT NAME	INSTALLATION ELEVATION	ITEM NO.	EQUIPMENT NAME	INSTALLATION ELEVATION
D-8501	Knock-out Drum	+89.300	FL-8501	Flare Stack	+104.550
FL-8503	Molecular Seal	+149.000	FL-8502	Flare Tip	+154.000
X-8502	Derrick	+89.500	PL-8501A/B/C/D	Pilot (with FFG & HE)	+154.650

GENERAL NOTES

- ALL DIMENSIONS ARE IN mm. ALL ELEVATIONS AND COORDINATES ARE IN m.
- DELETE.
- THE COORDINATE SYSTEM IS TRANSLATION FORMULA AS FOLLOWS:  
 $Y = Ncos\alpha - E\sin\alpha + 3051408.46$   
 $X = N\sin\alpha + Ecos\alpha + 652275.26$   
 $\alpha = 7.52775036^\circ$   
 N,E IS ARCHITECTURE COORDINATE SYSTEM.  
 X,Y IS SURVEYING COORDINATE SYSTEM.

REFERENCE DRAWINGS

SYMBOLS AND LEGENDS

KEY PLAN

REV.	DESCRIPTION	DATE	DESIGN	DRAW	CHECK	REVIEW	APPROVE
△	Final Issue	11.12.2019	Geng Yunfei		Bai Yang	Ji Ningbo	
△	Final Issue	31.10.2018	Geng Yunfei		Bai Yang	Ji Ningbo	
△	Final Issue	22.11.2017	Geng Yunfei		Bai Yang	Ji Ningbo	
△	Issued For Approval	22.09.2017	Geng Yunfei		Bai Yang	Ji Ningbo	
△	Issued For Comments	17.07.2017	Geng Yunfei		Bai Yang	Ji Ningbo	

THIS DOCUMENT IS THE PROPERTY OF TCC. NO PART OF THIS DOCUMENT SHALL BE REPRODUCED OR DISCLOSED TO OTHERS OR USED FOR ANY PURPOSE WHATSOEVER EXCEPT WITH THE PRIOR WRITTEN PERMISSION OF TCC.

OWNER: Middle East Kimiaye Pars Company

CONTRACTOR: 中国天辰工程有限公司 CHINA TIANCHEN ENGINEERING CORPORATION

VENDOR: 江苏中圣高科技产业有限公司 JIANGSU SUNPOWER TECHNOLOGY CO., LTD

PROJECT		Methanol Project	
UNIT		Flare	
PHASE		Detail Engineering	
OWNER DWG NO.		MKP-VD-8500-237-511-A1	

SCALE	SHEET	TOT.	SIZE
1:120	1	1	A1

Counter	Sign	Date